

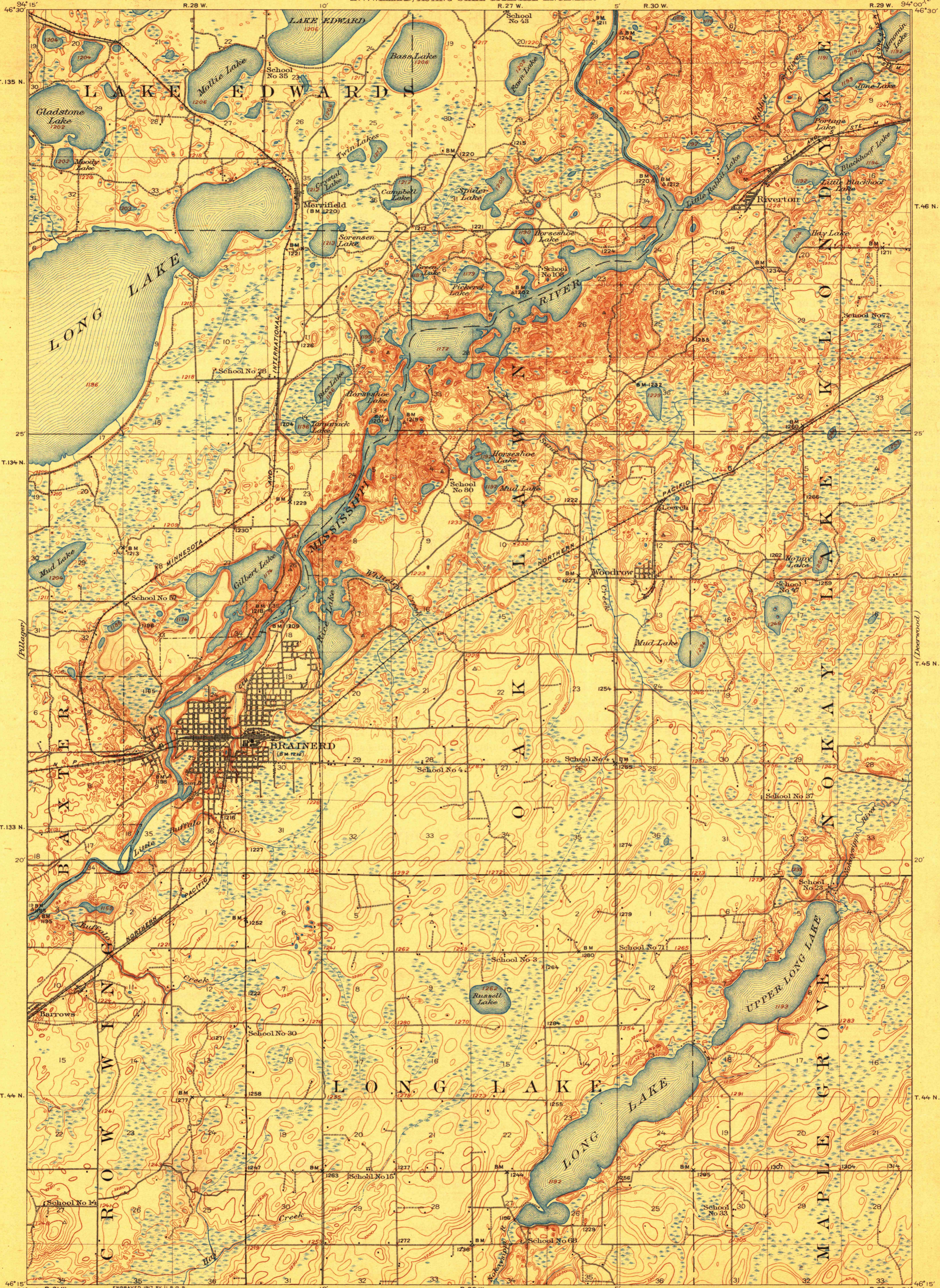
TOPOGRAPHY

STATE OF MINNESOTA

DEPARTMENT OF THE INTERIOR
FRANKLIN K. LANE, SECRETARY
U.S. GEOLOGICAL SURVEY
GEORGE OTIS SMITH, DIRECTOR

W. S. HAMMOND, GOVERNOR
J. A. O. PREUS, STATE AUDITOR
JULIUS A. SCHMAHL, SEC. OF STATE
E. V. WILLARD, ACTING STATE DRAINAGE ENGINEER

MINNESOTA
(CROW WING COUNTY)
BRainerd QUADRANGLE



ENGRAVED 1917 BY U.S.G.S.
R. B. Marshall, Chief Geographer.
W. H. Heron, Geographer in charge.
Topography by F. B. Barrett and J. H. Wilson.
Control by U.S. Coast and Geodetic Survey,
Mississippi River Commission, E. L. McNair, and J. M. Ray.
Surveyed in 1914-1915.

GEOGRAPHY LABORATORY
DEPARTMENT OF GEOLOGY
UNIVERSITY OF WISCONSIN

Scale 62500
1 2 3 4 Miles
1 2 3 4 5 Kilometers

Contour interval 10 feet.
Datum is mean sea level.

Approximate Mean Declination 1915.
Edition of 1918.
BRainerd