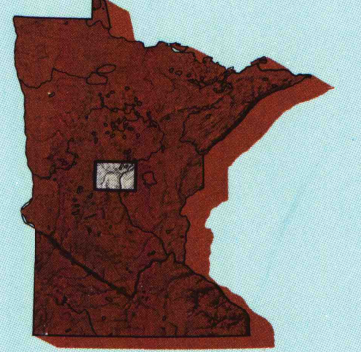


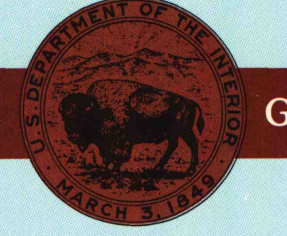
# Brainerd MINNESOTA

1:100 000-scale planimetric map



30 X 60 MINUTE QUADRANGLE SHOWING

- Elevations in meters
- Highways, roads and other manmade structures
- Water features
- Woodland areas
- Geographic names



GEOLOGICAL SURVEY

1986

Produced by the United States Geological Survey  
 Compiled from USGS 1:24 000-scale topographic maps dated 1954-1981. Planimetry revised from aerial photographs taken 1984 and other source data. Revised information not field checked. Map edited 1986.  
 Projection and 10 000-meter grid, zone 15, Universal Transverse Mercator  
 25 000-foot grid ticks based on Minnesota coordinate system, central zone  
 1927 North American Datum  
 To place on the predicted North American Datum 1983, move the projection lines 7 meters north and 20 meters east  
 There may be private inholdings within the boundaries of the National or State reservations shown on this map.

NATIONAL GEODETIC VERTICAL DATUM OF 1929  
ELEVATIONS SHOWN TO THE NEAREST METER

THIS MAP COMPLIES WITH NATIONAL MAP ACCURACY STANDARDS

CONVERSION TABLE		DECLINATION DIAGRAM		ADJOINING MAPS		
Meters	Feet	GN	MN	1	2	3
1	3.2808		5°	4	5	
2	6.5617			6	7	8
3	9.8425					
4	13.1234					
5	16.4042					
6	19.6850					
7	22.9659					
8	26.2467					
9	29.5275					
10	32.8084					

To convert meters to feet multiply by 3.2808  
 To convert feet to meters multiply by 0.3048

UTM grid convergence (GM) and 1983 magnetic declination (MN) at center of map  
 Diagram is approximate

1	Detroit Lakes
2	Pine River
3	Atkin
4	Battle Lake
5	Little Lake
6	Lake Minnetonka
7	St. Cloud
8	Mora

FOR SALE BY U.S. GEOLOGICAL SURVEY  
RESTON, VIRGINIA 22092

U.S. Regional Depository Copy  
DO NOT DISCARD

## Topographic Map Symbols

- Primary highway, hard surface
- Secondary highway, hard surface
- Light duty road, principal street, hard or improved surface
- Other road or street, trail
- Route marker, Interstate, U.S. State
- Railroad, standard gage, narrow gage
- Bridge, overpass, underpass
- Tunnel, road, railroad
- Built up area, locality, elevation
- Airport, landing field, landing strip
- National boundary
- State boundary
- County boundary
- National or State reservation boundary
- Land grant boundary
- U.S. public lands survey: range, township, section
- Range, township, section line: protracted
- Power transmission line, pipeline
- Dam, dam with lock
- Cemetery, building
- Well: water well, spring
- Mine shaft, adit or cave, mine, quarry, gravel pit
- Campground, picnic area; U.S. location monument
- Ruin, cliff dwelling
- Distorted surface: strip mine, lava, sand
- Contours: index, intermediate, supplementary
- Bathymetric contours: index, intermediate
- Stream, lake: perennial, intermittent
- Rapids, large and small; falls, large and small
- Area to be submerged; marsh, swamp
- Land subject to controlled inundation; woodland
- Sand, mangrove
- Orchard; vineyard

A pamphlet describing topographic maps is available on request

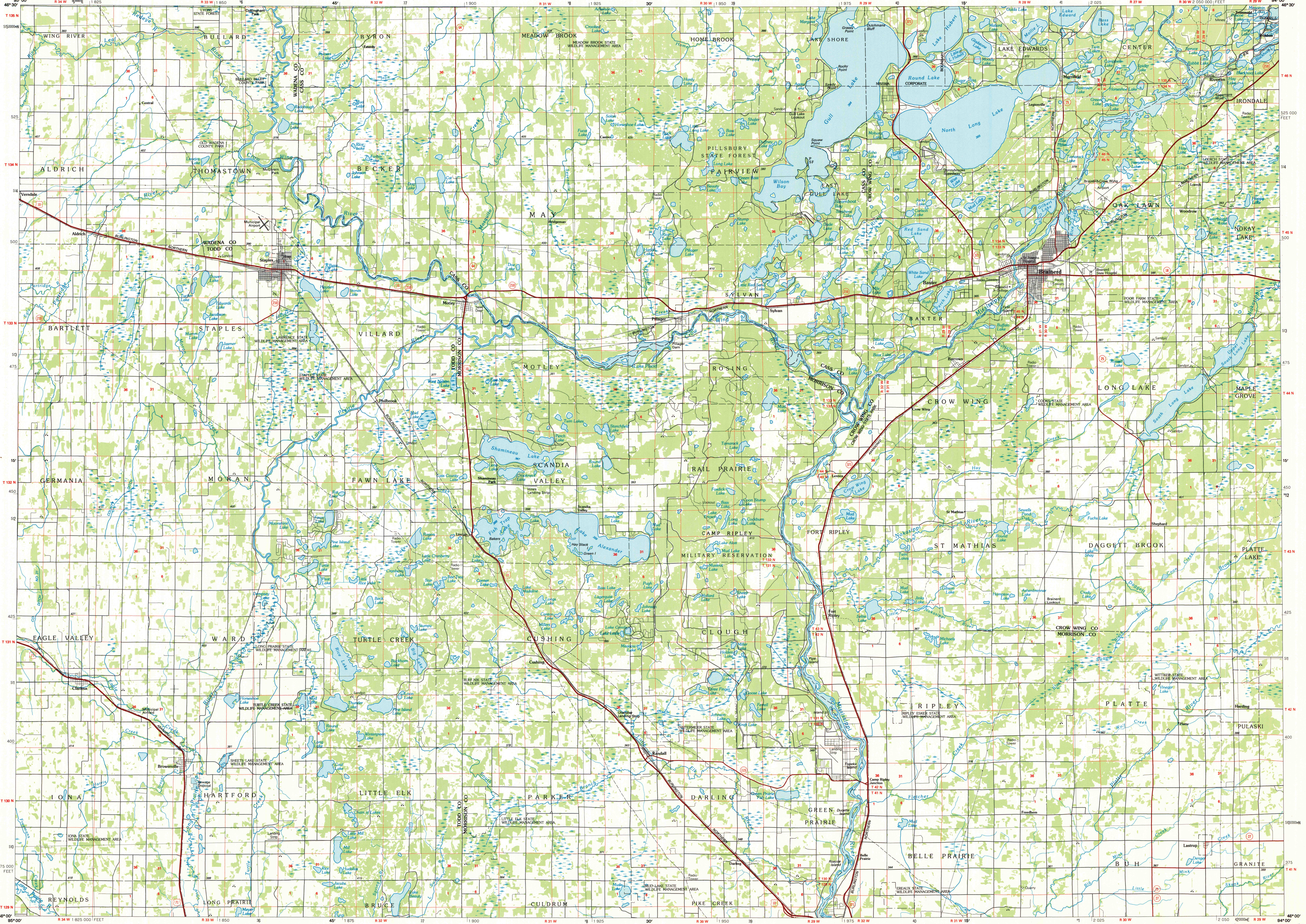
ARTHUR H. ROBINSON MAP LIBRARY  
University of Wisconsin-Madison

1986

OCT 2 - 1986 2006-7/8 SET

# BRainerd, MINNESOTA

30 X 60 MINUTE SERIES (PLANIMETRIC)



SCALE 1:100 000  
 1 CENTIMETER ON THE MAP REPRESENTS 1 KILOMETER ON THE GROUND  
 1:100 000  
 1000 0 5000 10000 15000 20000 METERS  
 0 1 2 3 4 5 6 7 8 9 10 11 12 13 14 15 16 17 18 19 20 KILOMETERS  
 0 1 2 3 4 5 6 7 8 9 10 11 12 13 14 15 16 17 18 19 20 MILES

INTERIOR—GEOLOGICAL SURVEY, RESTON, VIRGINIA—1986