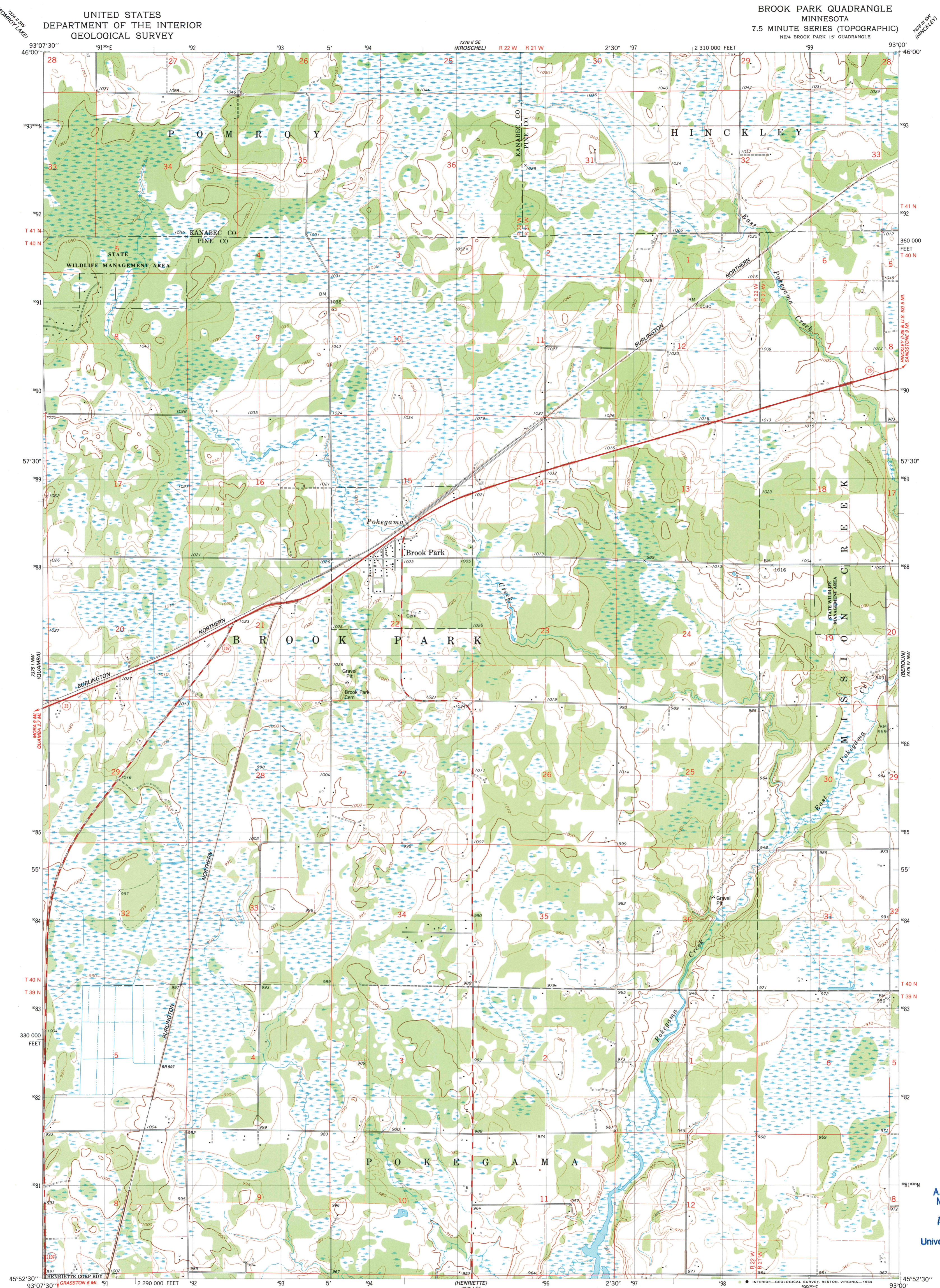


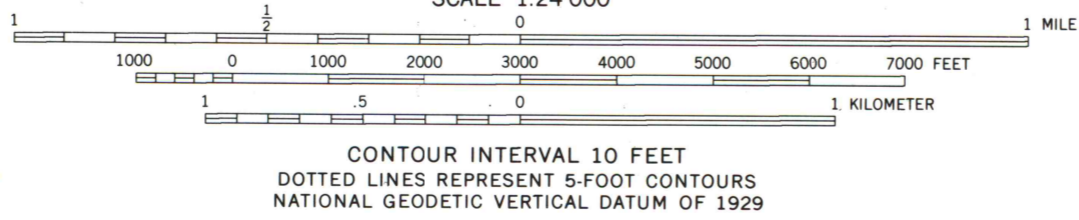
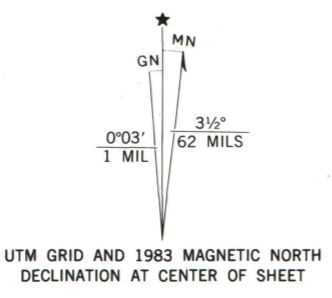
UNITED STATES
DEPARTMENT OF THE INTERIOR
GEOLOGICAL SURVEY

BROOK PARK QUADRANGLE
MINNESOTA
7.5 MINUTE SERIES (TOPOGRAPHIC)
NE¼ BROOK PARK 15' QUADRANGLE



Mapped, edited, and published by the Geological Survey

Control by USGS and NOS/NOAA
Topography by photogrammetric methods from aerial photographs taken 1978. Field checked 1980. Map edited 1983
Projection and 10,000-foot grid ticks: Minnesota coordinate system, central zone (Lambert conformal conic)
1000-meter Universal Transverse Mercator grid, zone 15 1927 North American Datum
To place on the predicted North American Datum 1983, move the projection lines 9 meters north and 16 meters east as shown by dashed corner ticks
There may be private inholdings within the boundaries of the National or State reservations shown on this map
Fine red dashed lines indicate selected fence and field lines where generally visible on aerial photographs



CONTOUR INTERVAL 10 FEET
DOTTED LINES REPRESENT 5-FOOT CONTOURS
NATIONAL GEODETIC VERTICAL DATUM OF 1929

THIS MAP COMPLIES WITH NATIONAL MAP ACCURACY STANDARDS
FOR SALE BY U. S. GEOLOGICAL SURVEY, RESTON, VIRGINIA 22092
A FOLDER DESCRIBING TOPOGRAPHIC MAPS AND SYMBOLS IS AVAILABLE ON REQUEST



ROAD CLASSIFICATION

Primary highway, hard surface	Light-duty road, hard or improved surface
Secondary highway, hard surface	Unimproved road
Interstate Route	U. S. Route
	State Route

A.H. ROBINSON
MAP LIBRARY
AUG 24 1984
University of Wisconsin
Madison

BROOK PARK, MINN.
NE¼ BROOK PARK 15' QUADRANGLE
N4552.5-W9300/7.5

1983
DMA 7375 1 NE-SERIES V872