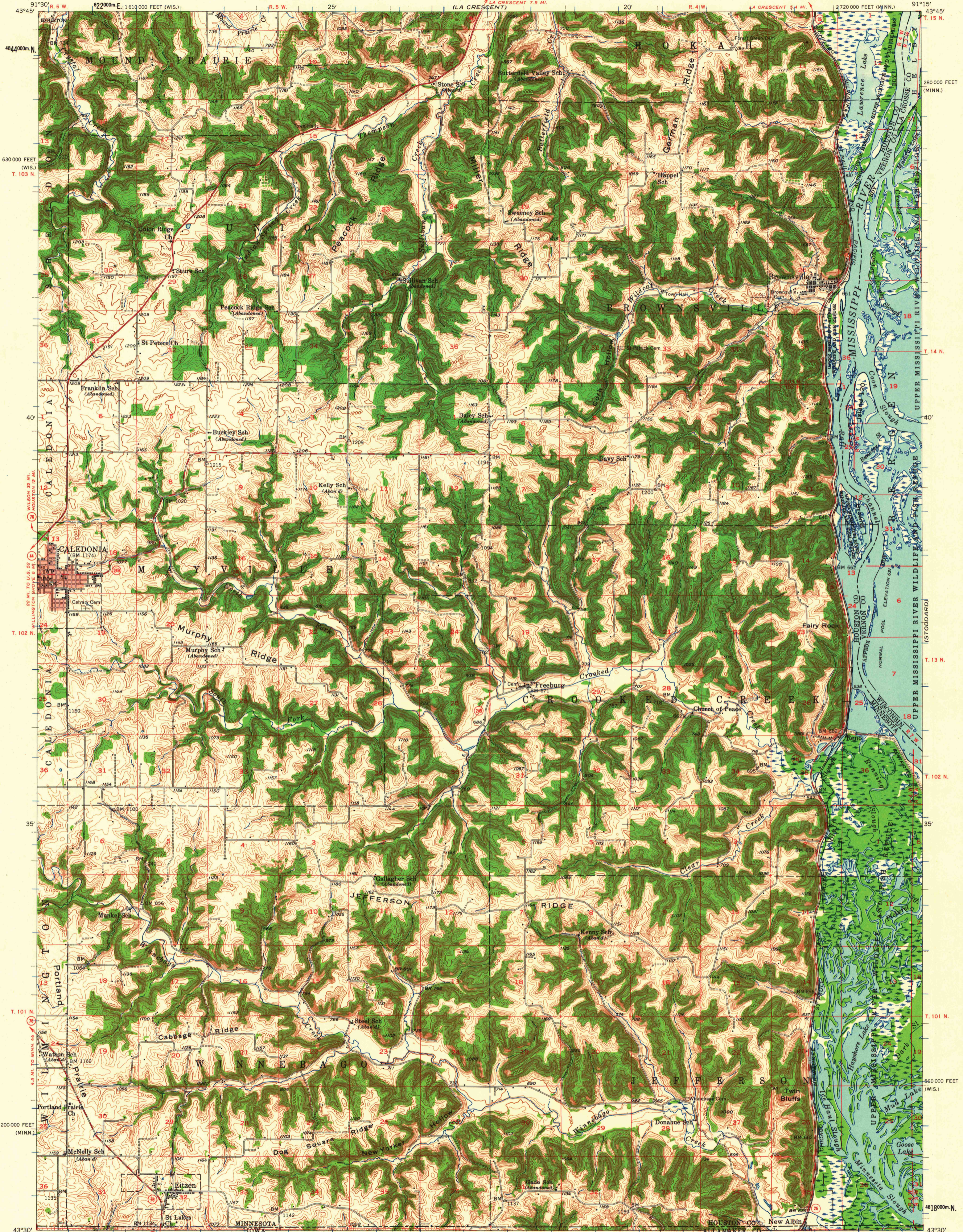


(LA CROSSE)



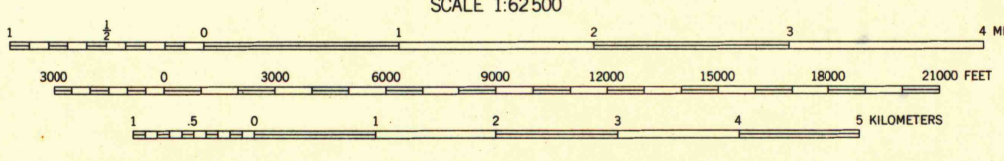
Mapped, edited, and published by the Geological Survey
Control by USGS, USC&GS, and USCE

Topography from aerial photographs by multiple methods
Aerial photographs taken 1952-1954. Field check 1956

Polyconic projection. 1927 North American datum
10,000-foot grid based on Minnesota coordinate system, south zone,
and Wisconsin coordinate system, south zone.
1000-meter Universal Transverse Mercator grid ticks,
zone 15, shown in blue

Red tint indicates area in which only
landmark buildings are shown

TRUE NORTH
MAGNETIC NORTH
APPROXIMATE MEAN
DECLINATION, 1956



CONTOUR INTERVAL 20 FEET
DATUM IS MEAN SEA LEVEL



ROAD CLASSIFICATION
Heavy-duty ——— Light-duty ———
Medium-duty ——— Unimproved dirt - - - - -
○ State Route

BROWNSVILLE, MINN.—WIS.—IOWA
N4330—W9115/15

1956

1956
copy
mnl

MAP AND AIR PHOTO LIBRARY
University of Wisconsin

THIS MAP COMPLIES WITH NATIONAL MAP ACCURACY STANDARDS
FOR SALE BY U. S. GEOLOGICAL SURVEY, DENVER 2, COLORADO OR WASHINGTON 25, D. C.
THE IOWA GEOLOGICAL SURVEY, IOWA CITY, IOWA
AND BY THE WISCONSIN GEOLOGICAL AND NATURAL HISTORY SURVEY, MADISON 6, WISCONSIN
A FOLDER DESCRIBING TOPOGRAPHIC MAPS AND SYMBOLS IS AVAILABLE ON REQUEST