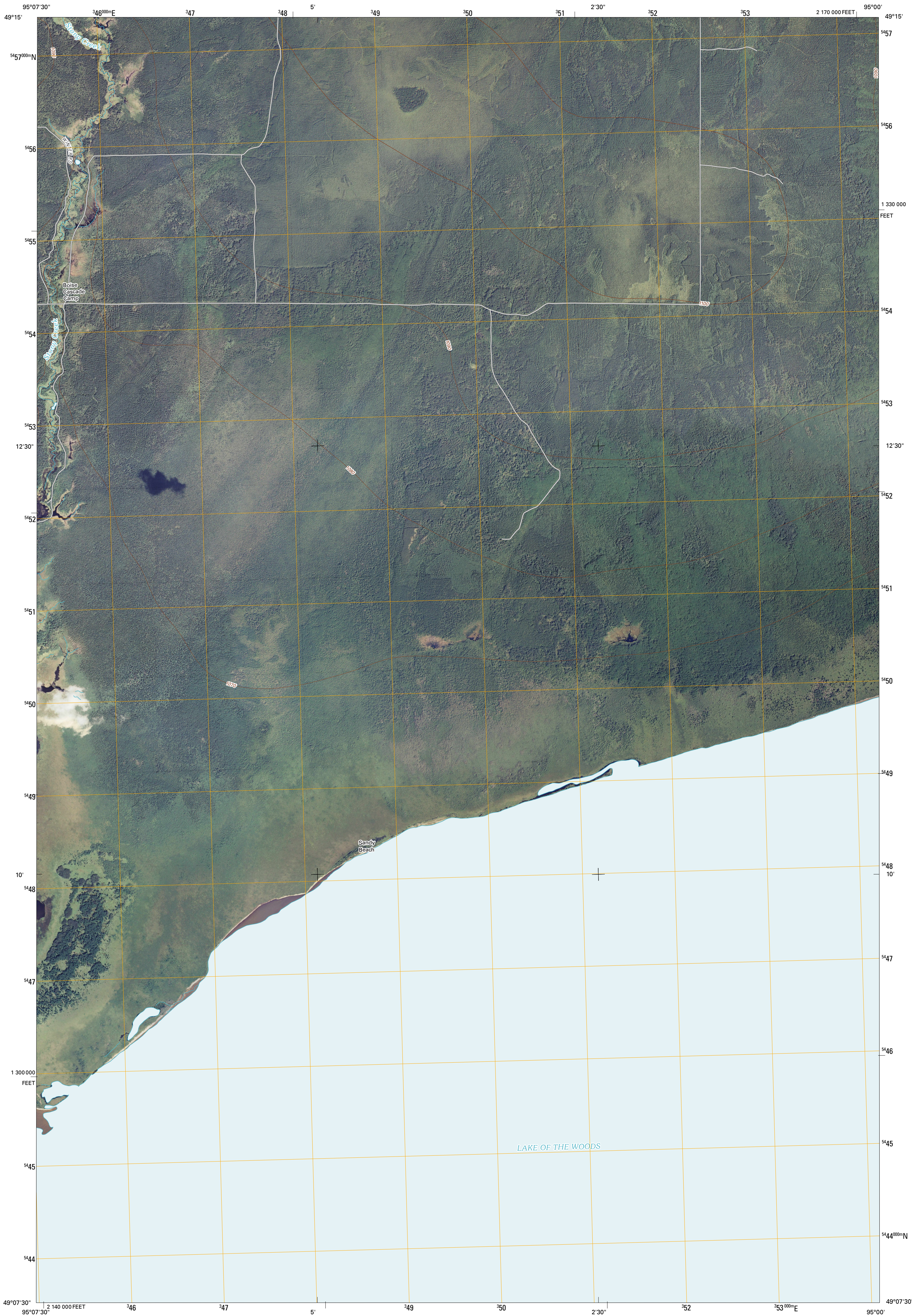




U.S. DEPARTMENT OF THE INTERIOR
U. S. GEOLOGICAL SURVEY



BUFFALO BAY NE QUADRANGLE
MINNESOTA
7.5-MINUTE SERIES

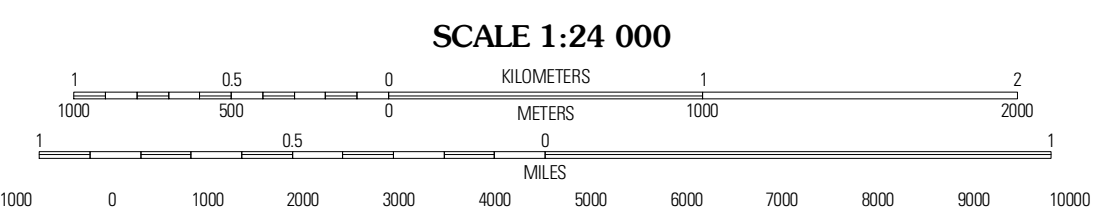


Produced by the United States Geological Survey
North American Datum of 1983 (NAD83)
World Geodetic System of 1984 (WGS84) Projection and
1 000-meter grid; Universal Transverse Mercator, Zone 15U
10 000-foot ticks; Minnesota Coordinate System of 1983
(north zone)

Imagery.....NAIP, August 2009
Roads.....S2006-2010 Tele Atlas
Name.....GNIS, 2008
Hydrography.....National Hydrography Dataset, 2009
Contours.....National Elevation Dataset, 1999

UTM GRID AND 2010 MAGNETIC NORTH
DECLINATION AT CENTER OF SHEET

U.S. National Grid
100,000m Square ID
U0
Grid Zone Designation
15U



SCALE 1:24 000

CONTOUR INTERVAL 10 FEET
NORTH AMERICAN VERTICAL DATUM OF 1988

This map was produced to conform with version 0.5.10 of the
draft USGS Standards for 7.5-Minute Quadrangle Maps.
A metadata file associated with this product is draft version 0.5.11



ROAD CLASSIFICATION			
Interstate Route	State Route	US Route	Local Road
Ramp	4WD		

QUADRANGLE LOCATION		
Angle Inlet SW	Angle Inlet	Flag Island
Buffalo Bay NW	Buffalo Bay NE	Garden Island West
Lake of the Woods 1 (All Water)	Lake of the Woods 2 (All Water)	Lake of the Woods 3 (All Water)

BUFFALO BAY NE, MN
2010