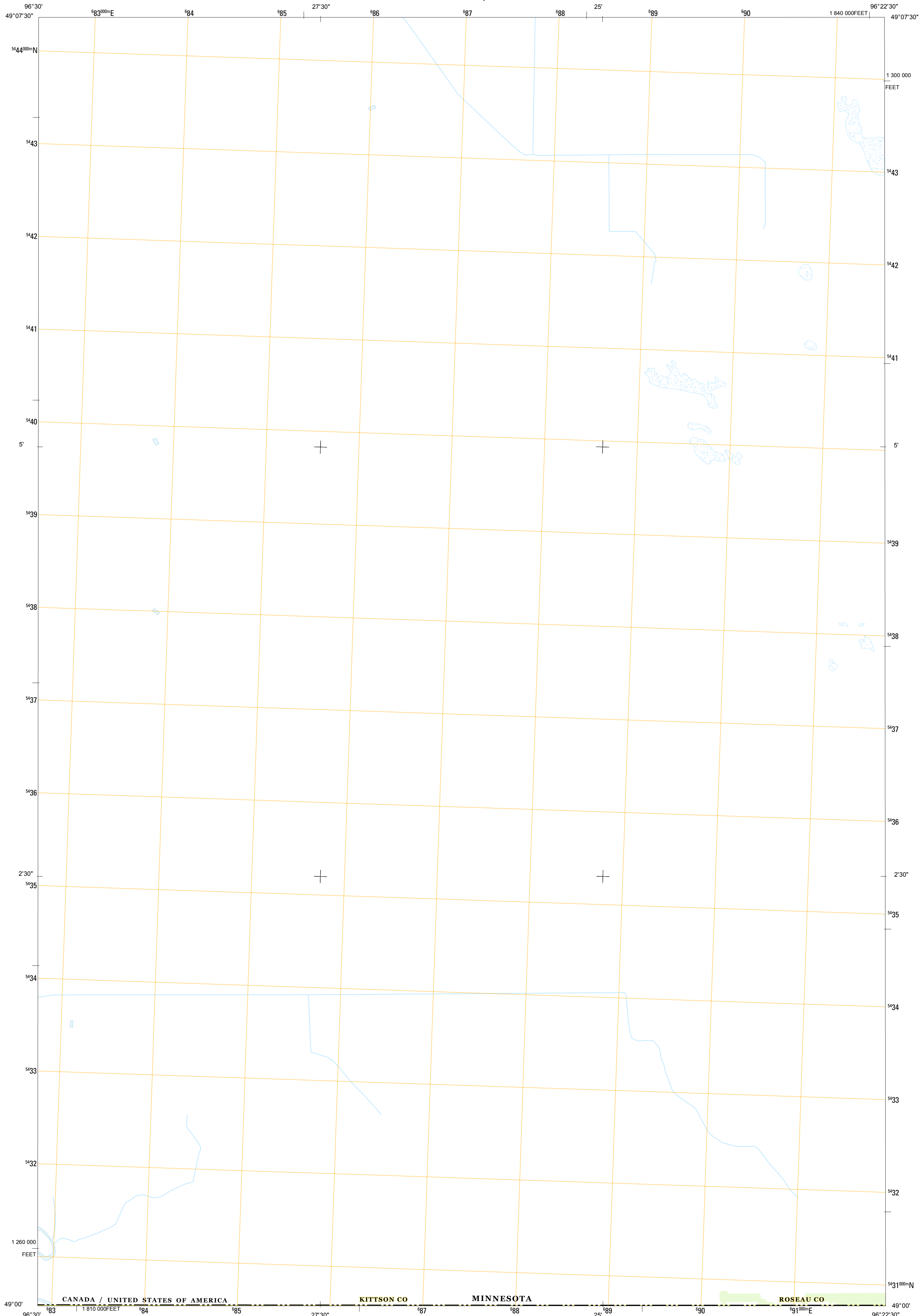




U.S. DEPARTMENT OF THE INTERIOR  
U. S. GEOLOGICAL SURVEY

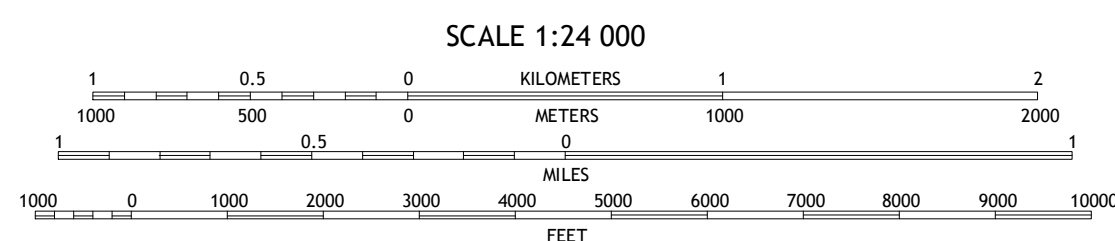
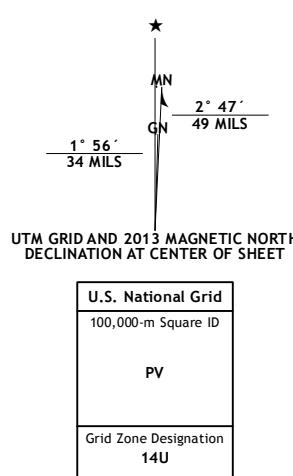


CARIBOU OE N QUADRANGLE  
MINNESOTA-MANITOBA  
7.5-MINUTE SERIES

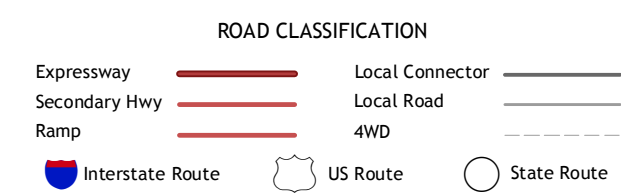


Produced by the United States Geological Survey  
North American Datum of 1983 (NAD83)  
World Geodetic System of 1984 (WGS84). Projection and  
1 000-meter grid; Universal Transverse Mercator, Zone 14U  
10 000-foot ticks:

Imagery.....Not Available  
Roads.....©2006-2012 TomTom  
Names.....GNIS, 2013  
Hydrography.....National Hydrography Dataset, 2009  
Contours.....Not Available  
Boundaries.....Census, IBWC, IBC, USGS, 1972 - 2012



CONTOURS NOT PRESENT BECAUSE AVAILABLE ELEVATION  
DATA DO NOT MEET ACCURACY REQUIREMENTS  
This map was produced to conform with the  
National Geospatial Program US Topo Product Standard, 2011.  
A metadata file associated with this product is draft version 0.6.11



ADJOINING 7.5 QUADRANGLES		
Skull Lake NE OE N	Caribou OE N	Caribou NE OE N
Skull Lake NE	Caribou	Caribou NE

CARIBOU OE N, MN-MB  
2013