

7478 I SE 2
7478 I SE 3
7478 I SE 4
7478 I SE 5
7478 I SE 6
7478 I SE 7
7478 I SE 8
7478 I SE 9
7478 I SE 10
7478 I SE 11
7478 I SE 12
7478 I SE 13
7478 I SE 14
7478 I SE 15

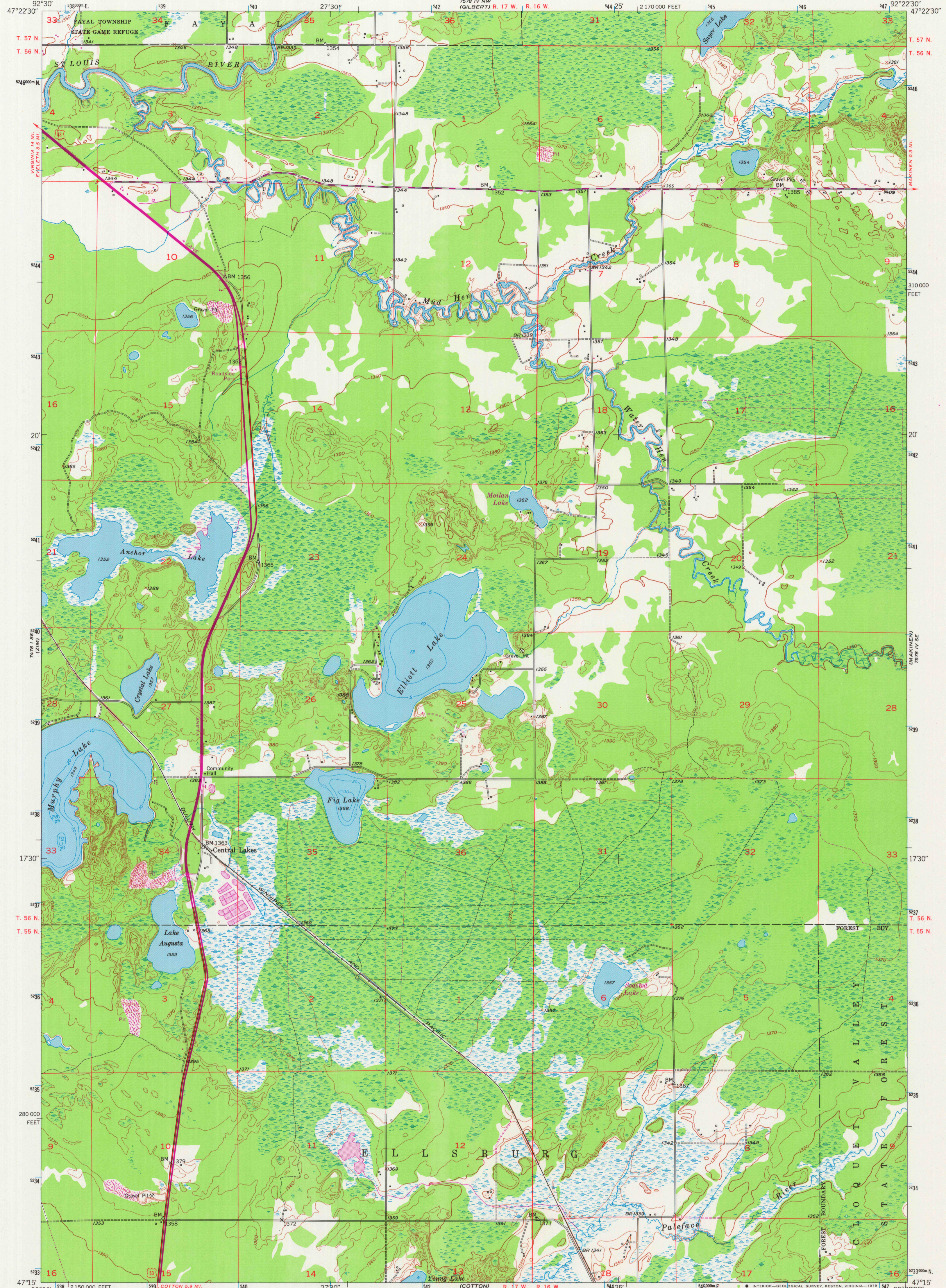
UNITED STATES
DEPARTMENT OF THE INTERIOR
GEOLOGICAL SURVEY



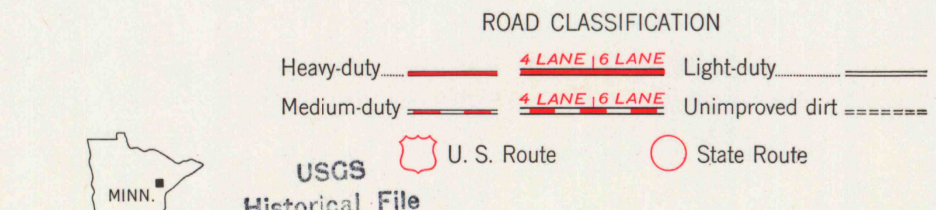
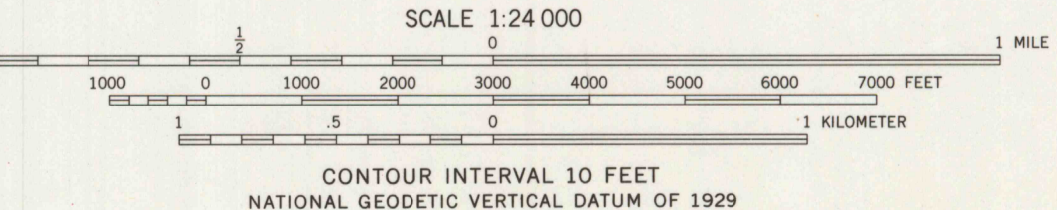
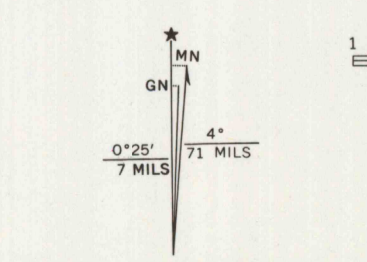
STATE OF MINNESOTA
IRON RANGE RESOURCES AND REHABILITATION COMMISSION

CENTRAL LAKES QUADRANGLE
MINNESOTA-ST. LOUIS CO.
7.5 MINUTE SERIES (TOPOGRAPHIC)

7478 I SE 16
7478 I SE 17
7478 I SE 18
7478 I SE 19
7478 I SE 20
7478 I SE 21
7478 I SE 22
7478 I SE 23
7478 I SE 24
7478 I SE 25
7478 I SE 26
7478 I SE 27
7478 I SE 28
7478 I SE 29
7478 I SE 30
7478 I SE 31
7478 I SE 32
7478 I SE 33
7478 I SE 34
7478 I SE 35
7478 I SE 36
7478 I SE 37
7478 I SE 38
7478 I SE 39
7478 I SE 40
7478 I SE 41
7478 I SE 42
7478 I SE 43
7478 I SE 44
7478 I SE 45
7478 I SE 46
7478 I SE 47
7478 I SE 48
7478 I SE 49
7478 I SE 50
7478 I SE 51
7478 I SE 52
7478 I SE 53
7478 I SE 54
7478 I SE 55
7478 I SE 56
7478 I SE 57
7478 I SE 58
7478 I SE 59
7478 I SE 60
7478 I SE 61
7478 I SE 62
7478 I SE 63
7478 I SE 64
7478 I SE 65
7478 I SE 66
7478 I SE 67
7478 I SE 68
7478 I SE 69
7478 I SE 70
7478 I SE 71
7478 I SE 72
7478 I SE 73
7478 I SE 74
7478 I SE 75
7478 I SE 76
7478 I SE 77
7478 I SE 78
7478 I SE 79
7478 I SE 80
7478 I SE 81
7478 I SE 82
7478 I SE 83
7478 I SE 84
7478 I SE 85
7478 I SE 86
7478 I SE 87
7478 I SE 88
7478 I SE 89
7478 I SE 90
7478 I SE 91
7478 I SE 92
7478 I SE 93
7478 I SE 94
7478 I SE 95
7478 I SE 96
7478 I SE 97
7478 I SE 98
7478 I SE 99
7478 I SE 100



Mapped, edited, and published by the Geological Survey
Control by USGS and USC&GS
Topography from aerial photographs by Kelsh plotter
Aerial photographs taken 1950. Field check 1951
Depth curves and soundings compiled from charts furnished by
Minnesota Department of Conservation
Polyconic projection. 1927 North American datum
10,000-foot grid based on Minnesota coordinate system,
north zone
1000-meter Universal Transverse Mercator grid ticks,
zone 15, shown in blue
Revisions shown in purple compiled from aerial photographs
taken 1969. This information not field checked



USGS
Historical File
Topographic Division
CENTRAL LAKES, MINN.
N4715-W9222.5/7.5
1951
PHOTO REVISSED 1969
AMS 7578 IV SW-SERIES V872

THIS MAP COMPLIES WITH NATIONAL MAP ACCURACY STANDARDS
FOR SALE BY U.S. GEOLOGICAL SURVEY, RESTON, VIRGINIA 22092
A FOLDER DESCRIBING TOPOGRAPHIC MAPS AND SYMBOLS IS AVAILABLE ON REQUEST

There may be private inholdings within the boundaries of
the National or State reservations shown on this map

FEB 13 1980
3152