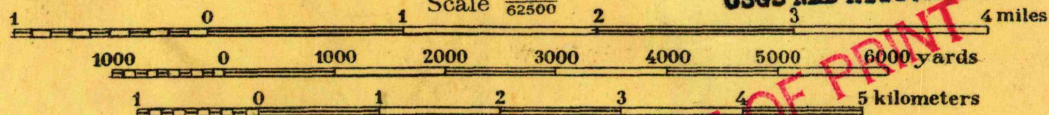


NOT MAPPED PRIOR TO 1919



Compiled in office of Department
Engineer, Central Department, 1919.

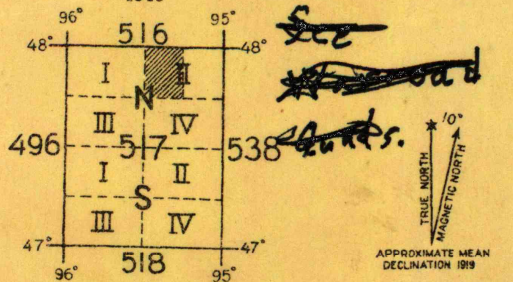
USGS NHD HISTORICAL MAP ARCHIVES
Reproduction Plant, U. S. Army, Washington Barracks, D. C.



RETURN TO:
USGS NHD HISTORICAL MAP ARCHIVES

Contour Interval 20 feet
Datum is mean sea level

OUT OF PRINT
CHURNES MINN



NOTE: OFFICERS USING THIS MAP WILL MARK HEREON CORRECTIONS AND ADDITIONS WHICH COME TO THE ATTENTION OF THE ENGINEER, WASHINGTON, D. C.