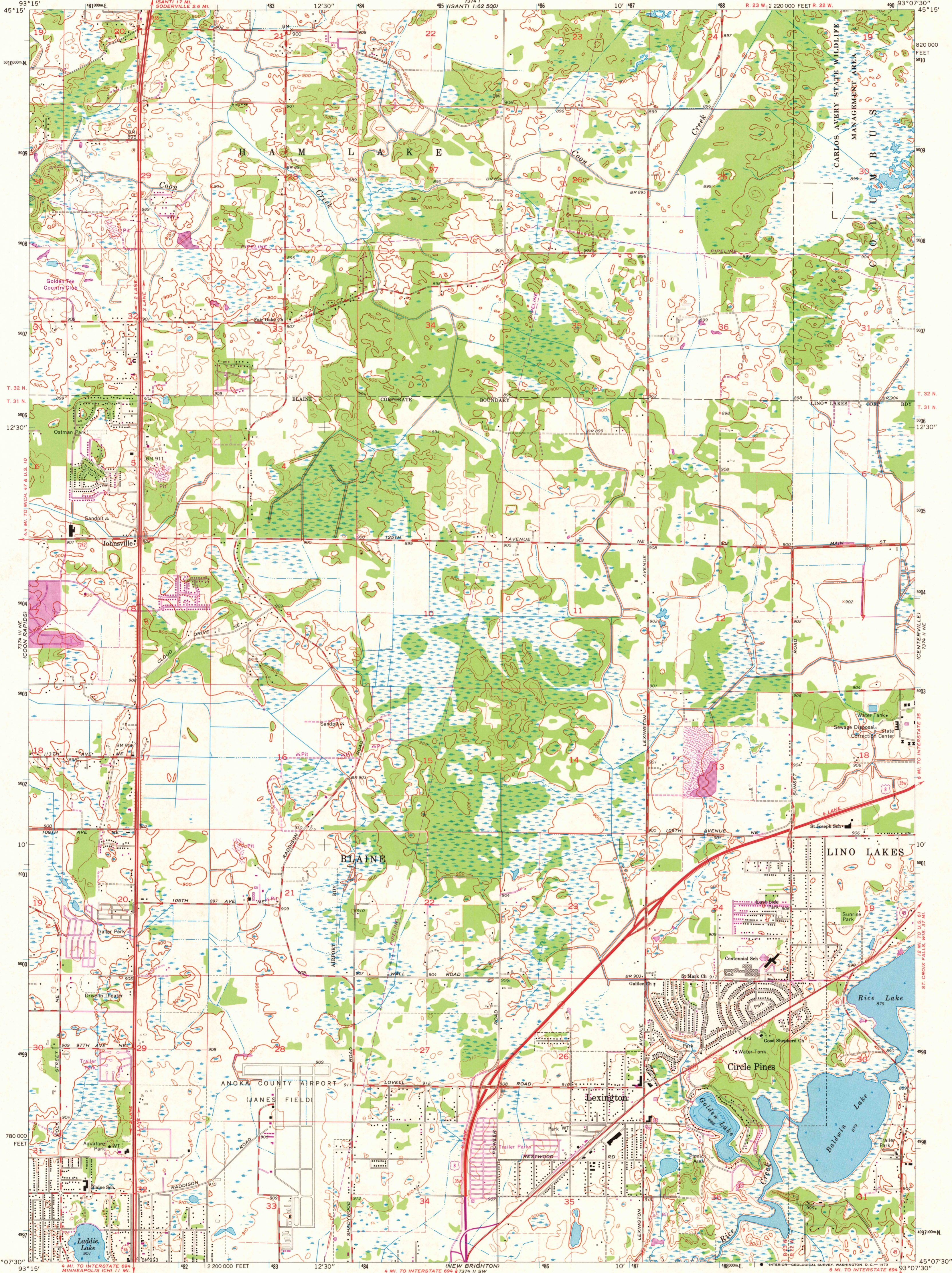


UNITED STATES
DEPARTMENT OF THE INTERIOR
GEOLOGICAL SURVEY

CIRCLE PINES QUADRANGLE
MINNESOTA—ANOKA CO.
7.5 MINUTE SERIES (TOPOGRAPHIC)
NW/4 NEW BRIGHTON 15' QUADRANGLE



Mapped, edited, and published by the Geological Survey

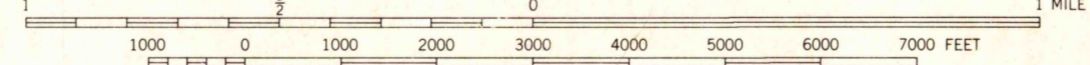
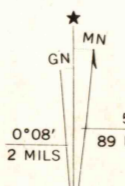
Control by USGS, USC&GS

Topography by photogrammetric methods from aerial photographs taken 1947. Field checked 1955. Revised from aerial photographs taken 1966. Field checked 1967

Hydrography compiled from information furnished by Minnesota Department of Conservation

Polyconic projection. 1927 North American datum
10,000-foot grid based on Minnesota coordinate system, south zone
1000 meter Universal Transverse Mercator grid ticks, zone 15, shown in blue

Fine red dashed lines indicate selected fence and field lines where generally visible on aerial photographs. This information is unchecked



CONTOUR INTERVAL 10 FEET
DATUM IS MEAN SEA LEVEL

ROAD CLASSIFICATION

- Heavy-duty ——— Light-duty ———
- Medium-duty ——— Unimproved dirt ———
- Interstate Route □ U.S. Route ○ State Route



QUADRANGLE LOCATION

CIRCLE PINES, MINN. JUN 15 1973
NW/4 NEW BRIGHTON 15' QUADRANGLE
N4507.5—W9307.5/7.5

1967
PHOTOREVISED 1972
AMS 7374 II NW—SERIES V872

THIS MAP COMPLIES WITH NATIONAL MAP ACCURACY STANDARDS
FOR SALE BY U.S. GEOLOGICAL SURVEY, DENVER, COLORADO 80225, OR WASHINGTON, D.C. 20242
A FOLDER DESCRIBING TOPOGRAPHIC MAPS AND SYMBOLS IS AVAILABLE ON REQUEST

Revision shown in purple compiled from aerial photographs taken 1972. This information not field checked
Purple tint indicates extension of urban areas

Historical File
Topographic Division

3005