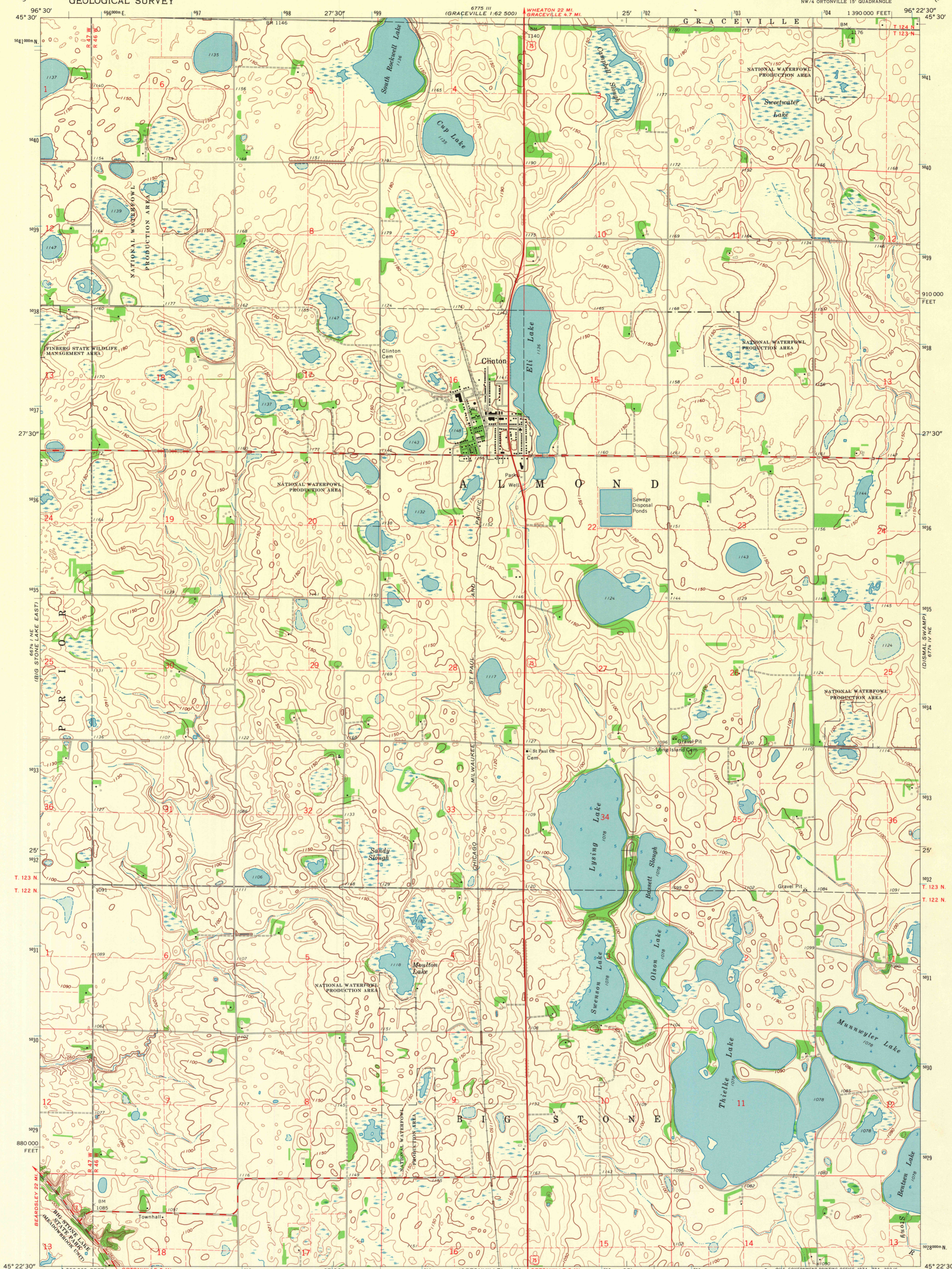


UNITED STATES
DEPARTMENT OF THE INTERIOR
GEOLOGICAL SURVEY

CLINTON QUADRANGLE
MINNESOTA—BIG STONE CO.
7.5 MINUTE SERIES (TOPOGRAPHIC)



Mapped, edited, and published by the Geological Survey

Control by USGS and USC&GS

Topography by photogrammetric methods from aerial photographs taken 1971. Field checked 1971

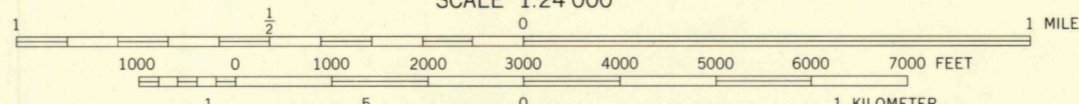
Hydrography compiled from information furnished by Minnesota Department of Conservation

Projection and 10,000-foot grid ticks: Minnesota coordinate system, south zone (Lambert conformal conic)

1000-meter Universal Transverse Mercator grid ticks, zone 14, shown in blue. 1927 North American datum

Fine red dashed lines indicate selected fence and field lines where generally visible on aerial photographs

This information is unchecked



CONTOUR INTERVAL 10 FEET
DATUM IS MEAN SEA LEVEL

ROAD CLASSIFICATION

- Primary highway, hard surface
- Secondary highway, hard surface
- Light-duty road, hard or unimproved surface
- Unimproved road
- Interstate Route
- U.S. Route
- State Route



CLINTON, MINN.
NW 1/4 ORTONVILLE 18 QUADRANGLE
N4522.5—W9622.5/7.5

1971

AMS 6774 IV NW—SERIES V872

THIS MAP COMPLIES WITH NATIONAL MAP ACCURACY STANDARDS
FOR SALE BY U.S. GEOLOGICAL SURVEY, DENVER, COLORADO 80225, OR WASHINGTON, D. C. 20242
A FOLDER DESCRIBING TOPOGRAPHIC MAPS AND SYMBOLS IS AVAILABLE ON REQUEST