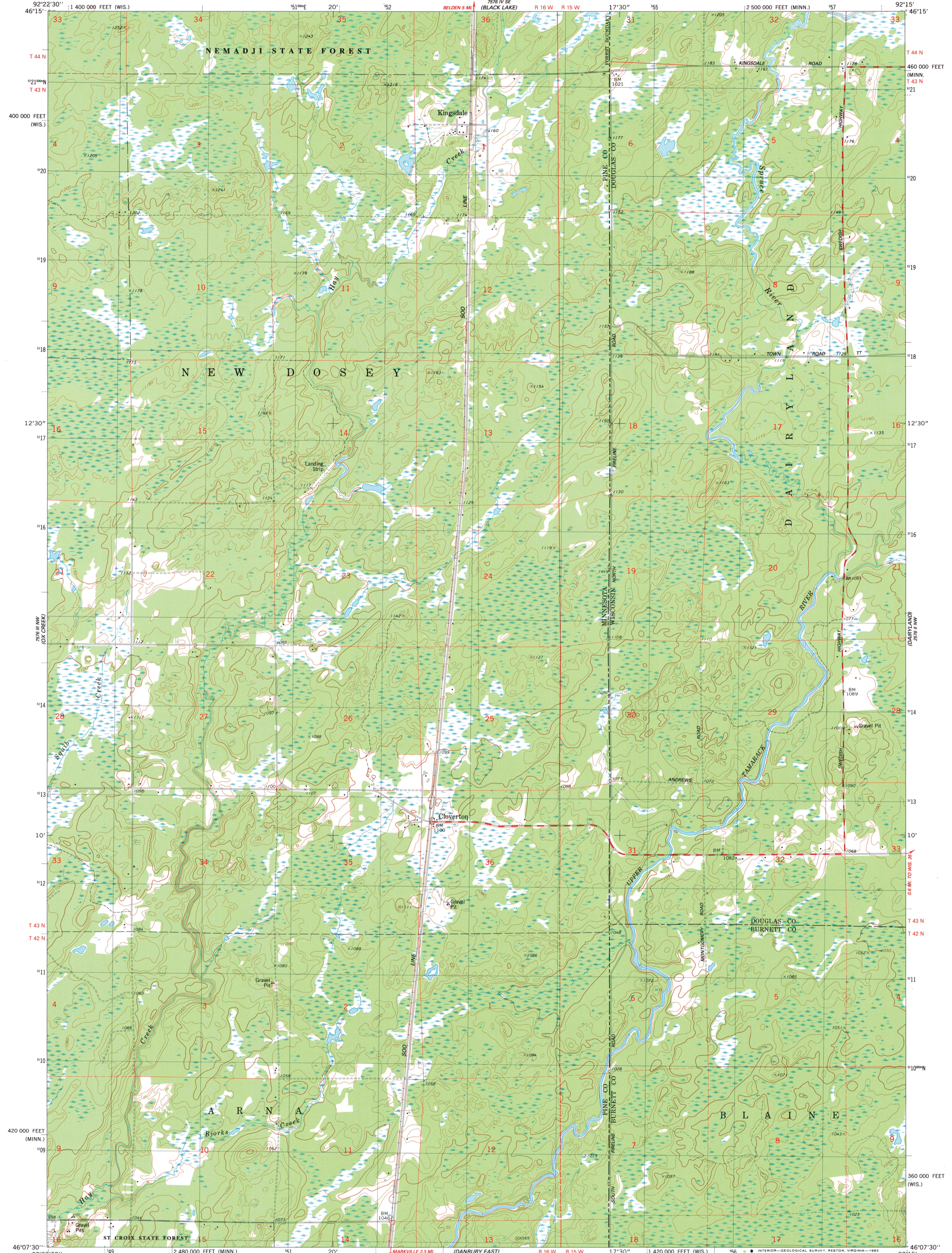


278 15 W  
102 106 SW

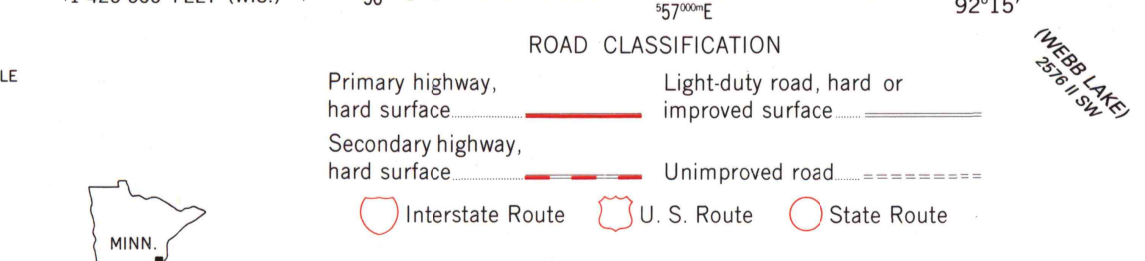
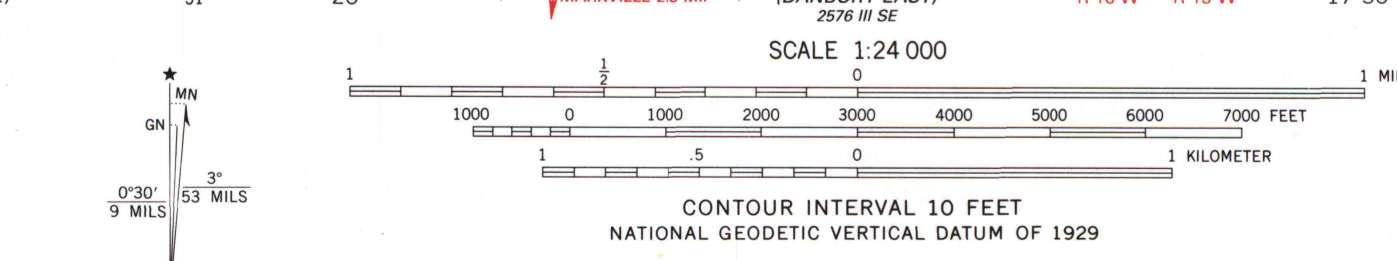
UNITED STATES  
DEPARTMENT OF THE INTERIOR  
GEOLOGICAL SURVEY

CLOVERTON QUADRANGLE  
MINNESOTA-WISCONSIN  
7.5 MINUTE SERIES (TOPOGRAPHIC)  
NE 1/4 DANBURY 15' QUADRANGLE

278 15 W  
102 106 SW



Mapped, edited, and published by the Geological Survey  
Control by USGS and NOS/NOAA  
Topography by photogrammetric methods from aerial photographs  
taken 1979. Field checked 1981. Map edited 1983  
Projection: Minnesota coordinate system, central zone  
(Lambert conformal conic)  
10,000-foot grid ticks based on Minnesota coordinate  
system, central zone and Wisconsin coordinate system, north zone  
1000-meter Universal Transverse Mercator grid, zone 15  
1927 North American Datum  
To place on the predicted North American Datum 1983,  
move the projection lines 8 meters north and  
14 meters east as shown by dashed corner ticks  
There may be private inholdings within the boundaries of the  
National or State reservations shown on this map  
Fine red dashed lines indicate selected fence and field lines  
where generally visible on aerial photographs  
This information is unchecked



THIS MAP COMPLIES WITH NATIONAL MAP ACCURACY STANDARDS  
FOR SALE BY U.S. GEOLOGICAL SURVEY, RESTON, VIRGINIA 22092  
AND WISCONSIN GEOLOGICAL AND NATURAL HISTORY SURVEY, MADISON, WISCONSIN 53706  
A FOLDER DESCRIBING TOPOGRAPHIC MAPS AND SYMBOLS IS AVAILABLE ON REQUEST

CLOVERTON, MINN.-WIS.  
NE 1/4 DANBURY 15' QUADRANGLE  
N4607.5-W9215.7.5  
1983  
DMA 7576 III NE-SERIES V872

JUL 23 1984  
ARTHUR H. ROBINSON MAP LIBRARY  
University of Wisconsin-Madison

1983  
Copy  
MNH  
X