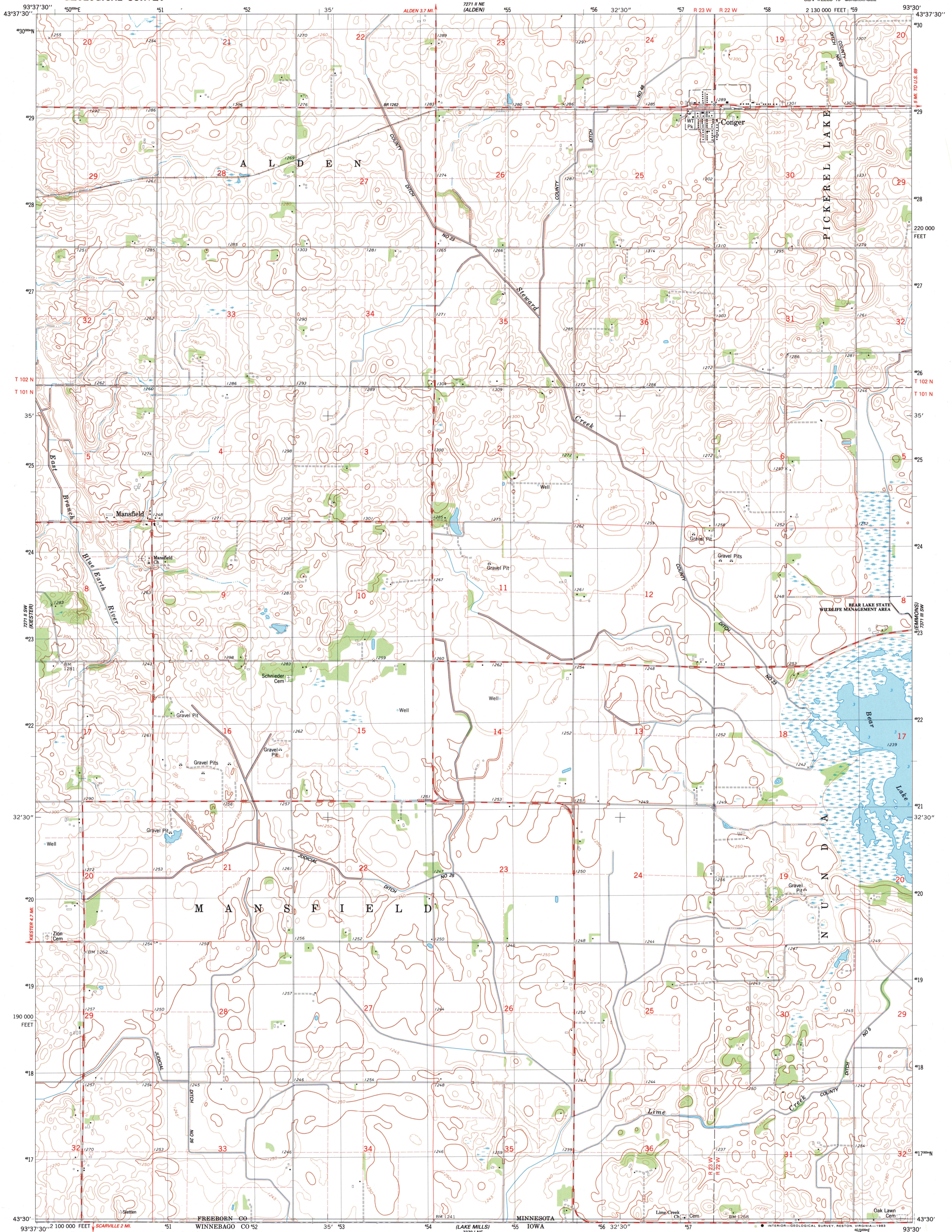


7271 II NW
ALBERT LEA WEST



Maped, edited, and published by the Geological Survey
Control by USGS and NOS/NOAA

Topography by photogrammetric methods from aerial photographs
taken 1979. Field checked 1980. Map edited 1982

Hydrography compiled from information furnished by
Minnesota Department of Natural Resources

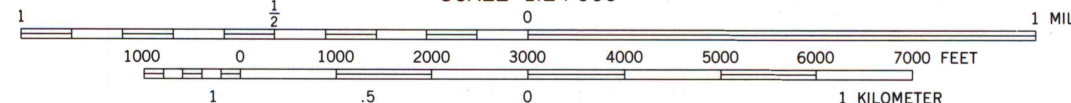
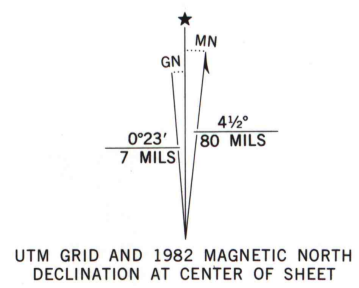
Projection and 10,000-foot grid ticks: Minnesota coordinate
system, south zone (Lambert conformal conic)

1000-meter Universal Transverse Mercator grid, zone 15
1927 North American Datum

To place on the predicted North American Datum 1983,
move the projection lines 6 meters north and
18 meters east as shown by dashed corner ticks

There may be private inholdings within the boundaries of the
National or State reservations shown on this map

Fine red dashed lines indicate selected fence and field lines where
generally visible on aerial photographs. This information is unchecked



CONTOUR INTERVAL 10 FEET
DOTTED LINES REPRESENT 5-FOOT CONTOURS
NATIONAL GEODETIC VERTICAL DATUM OF 1929

THIS MAP COMPLIES WITH NATIONAL MAP ACCURACY STANDARDS
FOR SALE BY U. S. GEOLOGICAL SURVEY, RESTON, VIRGINIA 22092
A FOLDER DESCRIBING TOPOGRAPHIC MAPS AND SYMBOLS IS AVAILABLE ON REQUEST

ROAD CLASSIFICATION

- Primary highway, hard surface
- Secondary highway, hard surface
- Interstate Route
- U. S. Route
- Light-duty road, hard or improved surface
- Unimproved road
- State Route



CONGER, MINN.
8E4 WELLS 15' QUADRANGLE
N4330-W9330/7.5

1982
DMA 7271 II SE-SERIES V872

A.H. ROBINSON
MAP LIBRARY

MAY 29 1984

University of Wisconsin
Madison