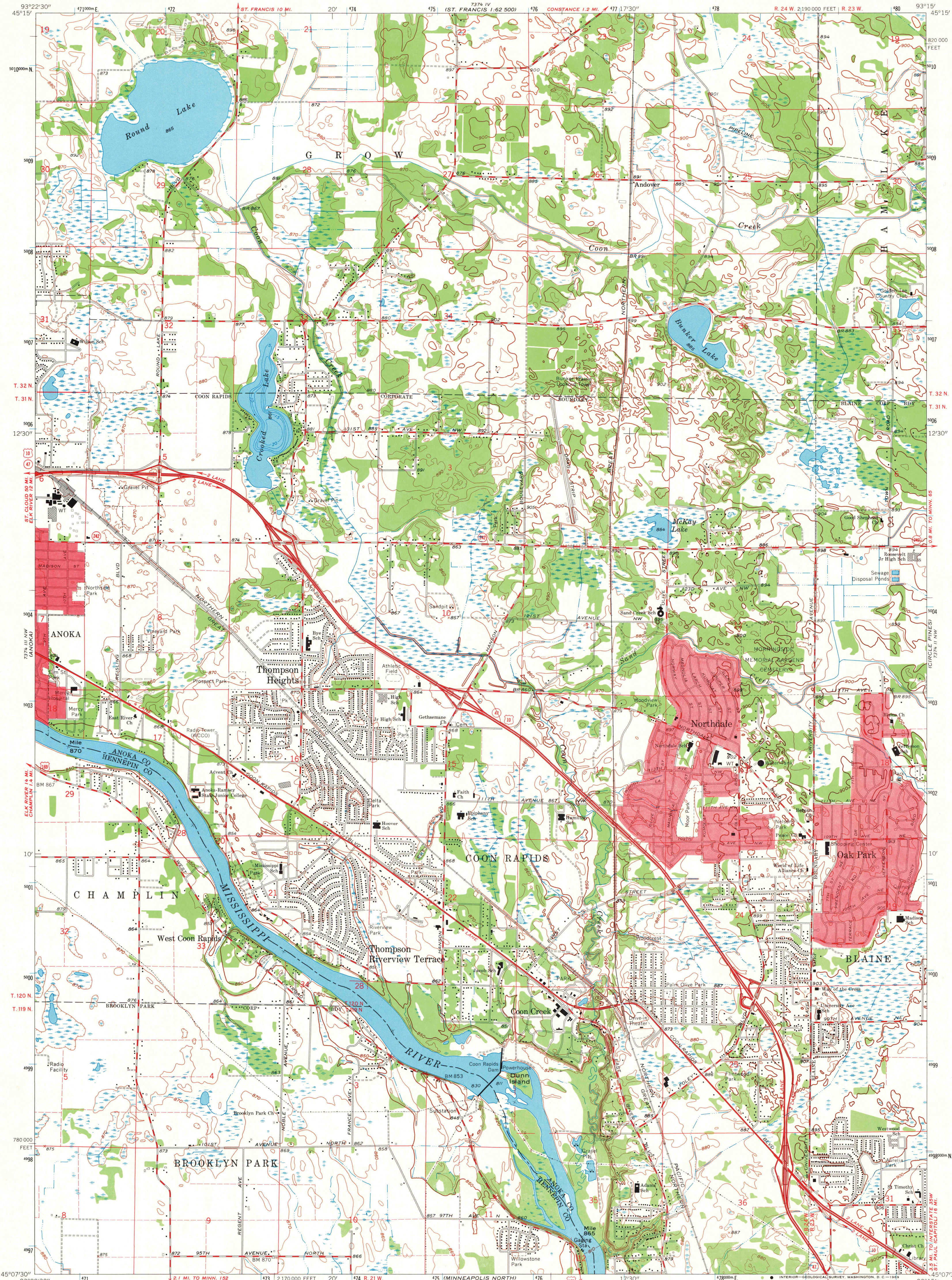


UNITED STATES
DEPARTMENT OF THE INTERIOR
GEOLOGICAL SURVEY

COON RAPIDS QUADRANGLE
MINNESOTA
7.5 MINUTE SERIES (TOPOGRAPHIC)
NE/4 ANOKA 15' QUADRANGLE



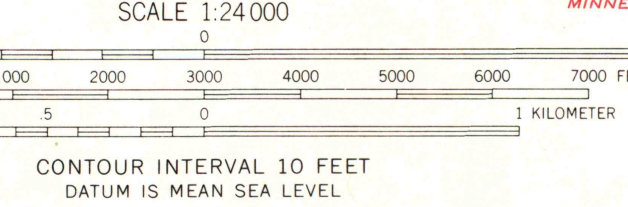
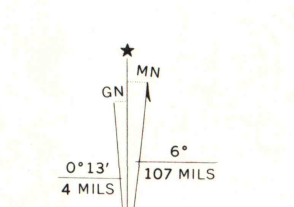
Mapped, edited, and published by the Geological Survey
Control by USGS, USC&GS, and USCE

Topography by photogrammetric methods from aerial photographs
taken 1947. Field checked 1955. Revised 1967

Depth curves compiled from chart furnished by
Minnesota Department of Conservation

Polyconic projection. 1927 North American datum
10,000-foot grid based on Minnesota coordinate system, south zone
1000-meter Universal Transverse Mercator grid ticks,
zone 15, shown in blue

Red tint indicates areas in which only landmark buildings are shown
Fine red dashed lines indicate selected fence and field lines where
generally visible on aerial photographs. This information is unchecked



ROAD CLASSIFICATION

Heavy-duty	Light-duty
Medium-duty	Unimproved dirt
U.S. Route	State Route



COON RAPIDS, MINN.
NE/4 ANOKA 15' QUADRANGLE
N4507.5 - W9315.7.5

DEC 2 - 1969

AMS 7374 III NE-SERIES V872