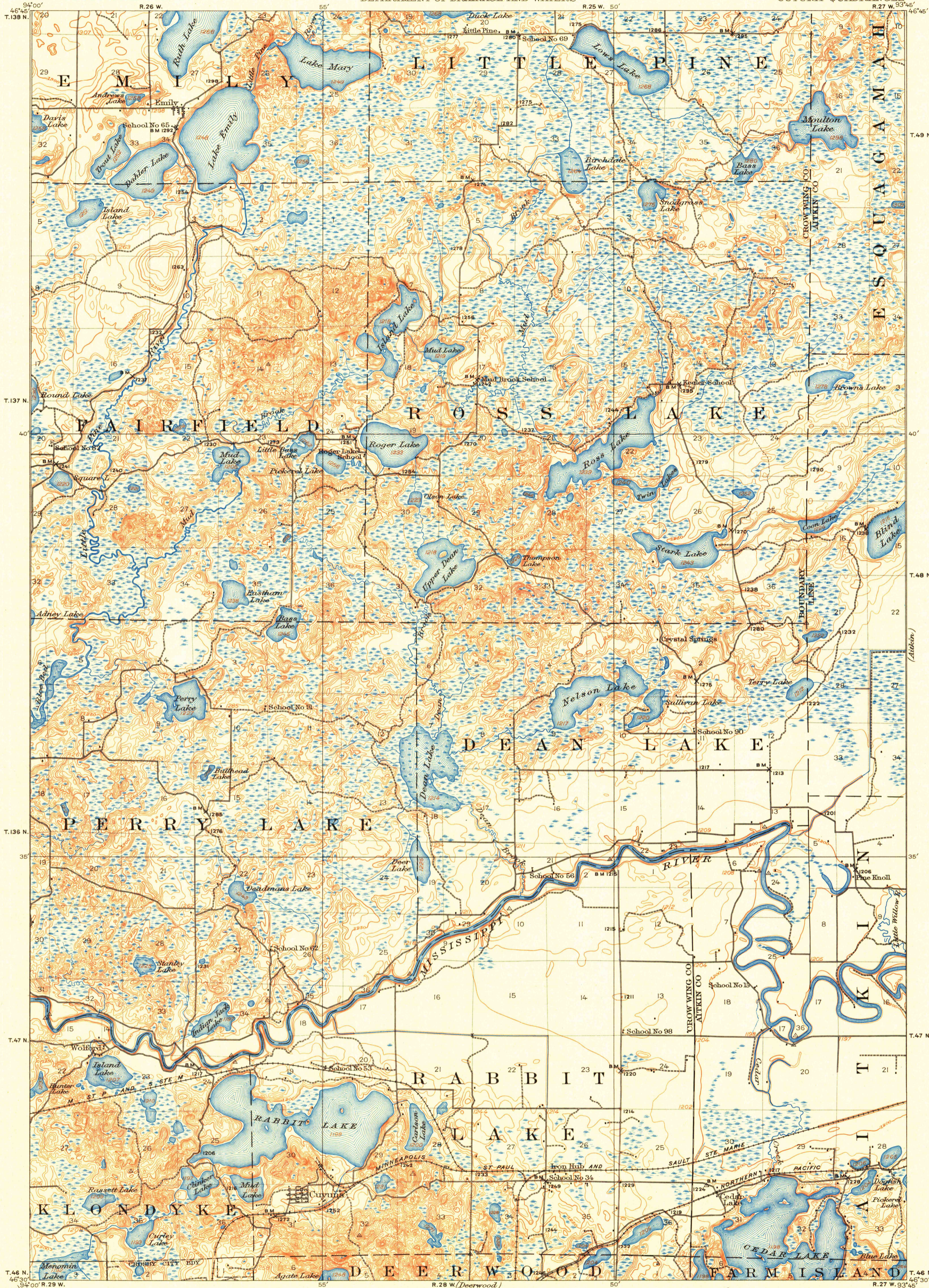


U. S. G. S.
FILE COPY

UNITED STATES
DEPARTMENT OF THE INTERIOR
GEOLOGICAL SURVEY

STATE OF MINNESOTA
REPRESENTED BY THE
DEPARTMENT OF DRAINAGE AND WATERS

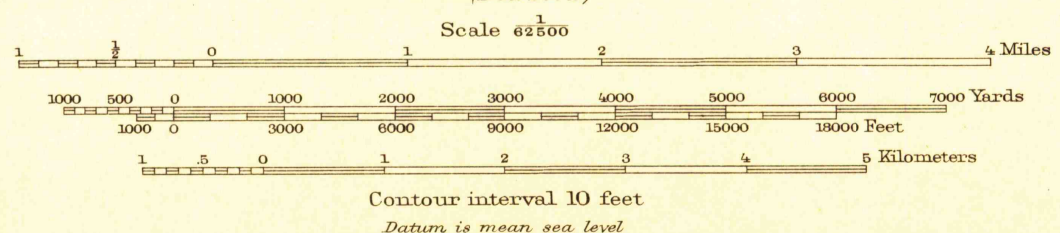
MINNESOTA
CUYUNA QUADRANGLE



U. S. G. S.
FILE COPY
Inspection and Editing.

U. S. G. S.
FILE COPY
Inspection and Editing.

R.B. Marshall, Chief Geographer.
W.H. Herron, Geographer in charge.
Topography by A.M. Walker, F.B. Barrett,
J.H. Wilson, and L.B. Roberts.
Control by Mississippi River Commission, Coast and
Geodetic Survey, E.L. McNaair, and J.M. Ray.
Surveyed in 1913.



Edition of Oct. 1915, reprinted 1948
Polyconic projection, North American datum

APPROXIMATE MEAN
MAGNETIC DECLINATION 1913.

MINN.
CUYUNA
N6430-W9345-15

OCT 8 1948

USGS
Historical File
Topographic Division

2130