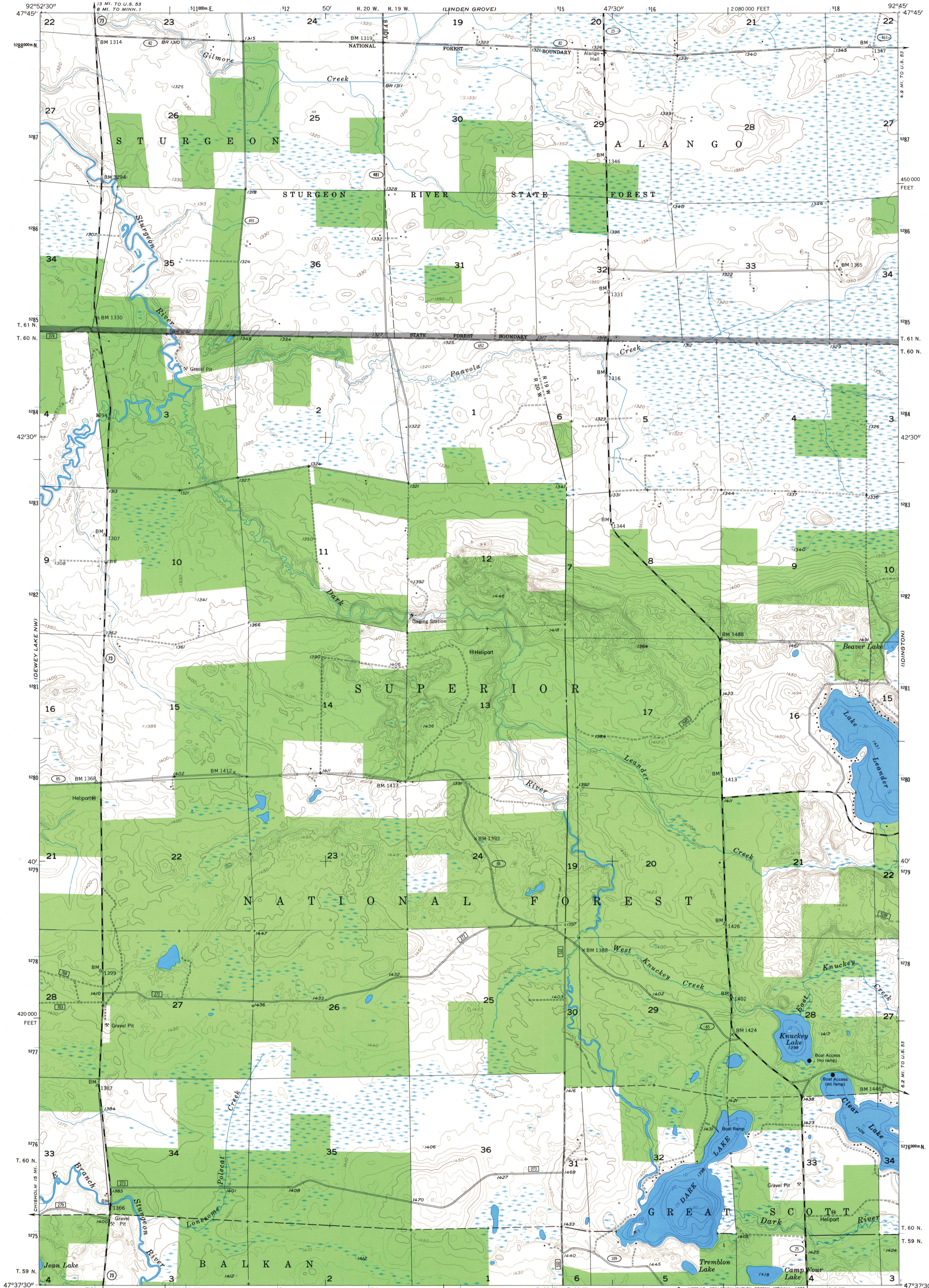


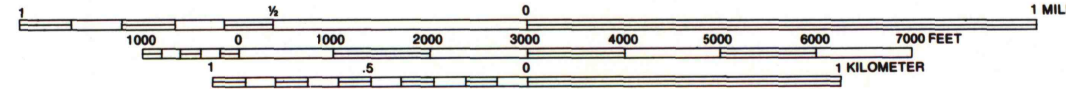
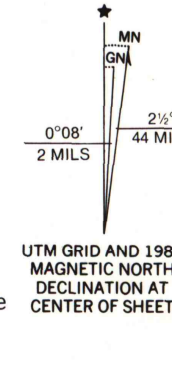
UNITED STATES
DEPARTMENT OF THE INTERIOR
GEOLOGICAL SURVEY
MODIFIED FOR USDA FOREST SERVICE USE

DARK LAKE QUADRANGLE
MINNESOTA—ST. LOUIS CO.
7.5 MINUTE SERIES (TOPOGRAPHIC)

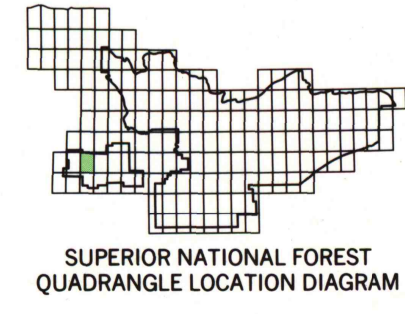


Base map prepared by the U.S. Geological Survey

Control by USGS and NOS/NOAA
Topography by photogrammetric methods from aerial photographs taken 1947. Field checked 1955
Hydrography compiled from information furnished by Minnesota Department of Conservation
Polyconic projection. 1927 North American Datum
10,000-foot grid based on Minnesota coordinate system, north zone
1000-meter Universal Transverse Mercator grid ticks, zone 15, shown in blue.
Modification to USGS base map by the Geometrics Service Center from 1981 aerial photography and 1983 correction guides furnished by the Eastern Region



- LEGEND**
- National Forest Boundary
 - National Forest Land as of 1983
 - Primary Highway
 - Secondary Highway
 - Improved Light Duty
 - Unimproved Dirt
 - U.S. Highway
 - State Highway
 - County Highway
 - Forest Road



Copies of this map are available for purchase at:
SUPERIOR NATIONAL FOREST HEADQUARTERS
Federal Building
5th Ave. & 1st Street
Duluth, Minnesota 55801
DARK LAKE, MINN.
47092-F7-TF-024
1955
PHOTOREVISED 1984
DMA 7479 III NE—SERIES V872

A.H. ROBINSON
MAP LIBRARY
APR 27 1989
University of Wisconsin
Madison

U.S. Depository Copy
Do Not Discard
OCT 17 1986

A13.28:50 7/7/47092-F7/
photo
4142
524
555
shil
90-6
MMP
10-22-86