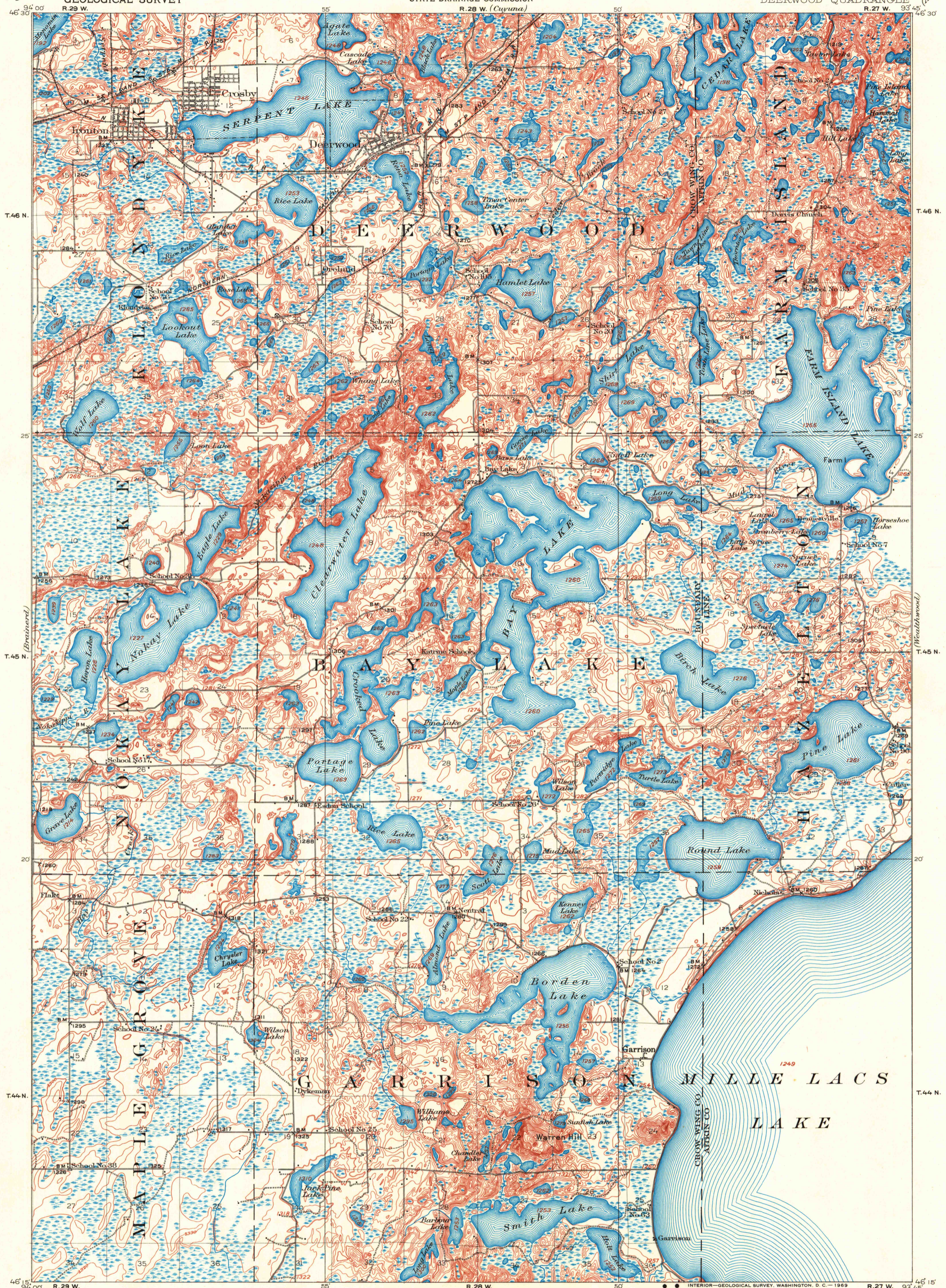
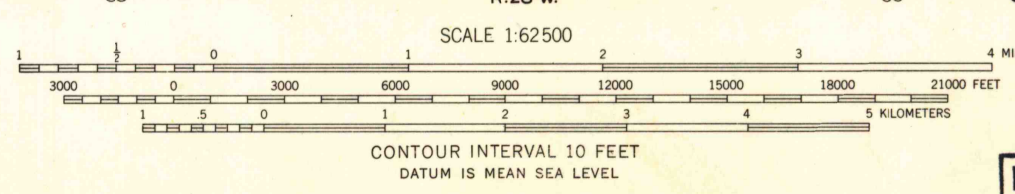


(Topographical)
1:25,000

(Aitkin)



R. B. Marshall, Chief Geographer.
W. H. Herron, Geographer in charge.
Topography by C. L. Sadler, O. H. Nelson, E. L. Hain,
F. B. Barrett, J. H. Wilson, L. B. Roberts and W. A. Reiter.
Control by E. L. McNair and J. M. Ray.
Surveyed in 1912.



INTERIOR—GEOLOGICAL SURVEY, WASHINGTON, D. C.—1909
Polyconic projection. 1927 North American datum
USGS
Historical File
Topographic Division
DEERWOOD, MINN.
N4615—W9345/15

FILE COPY
TOPOGRAPHIC DIVISION

2700
NOV 3 1969