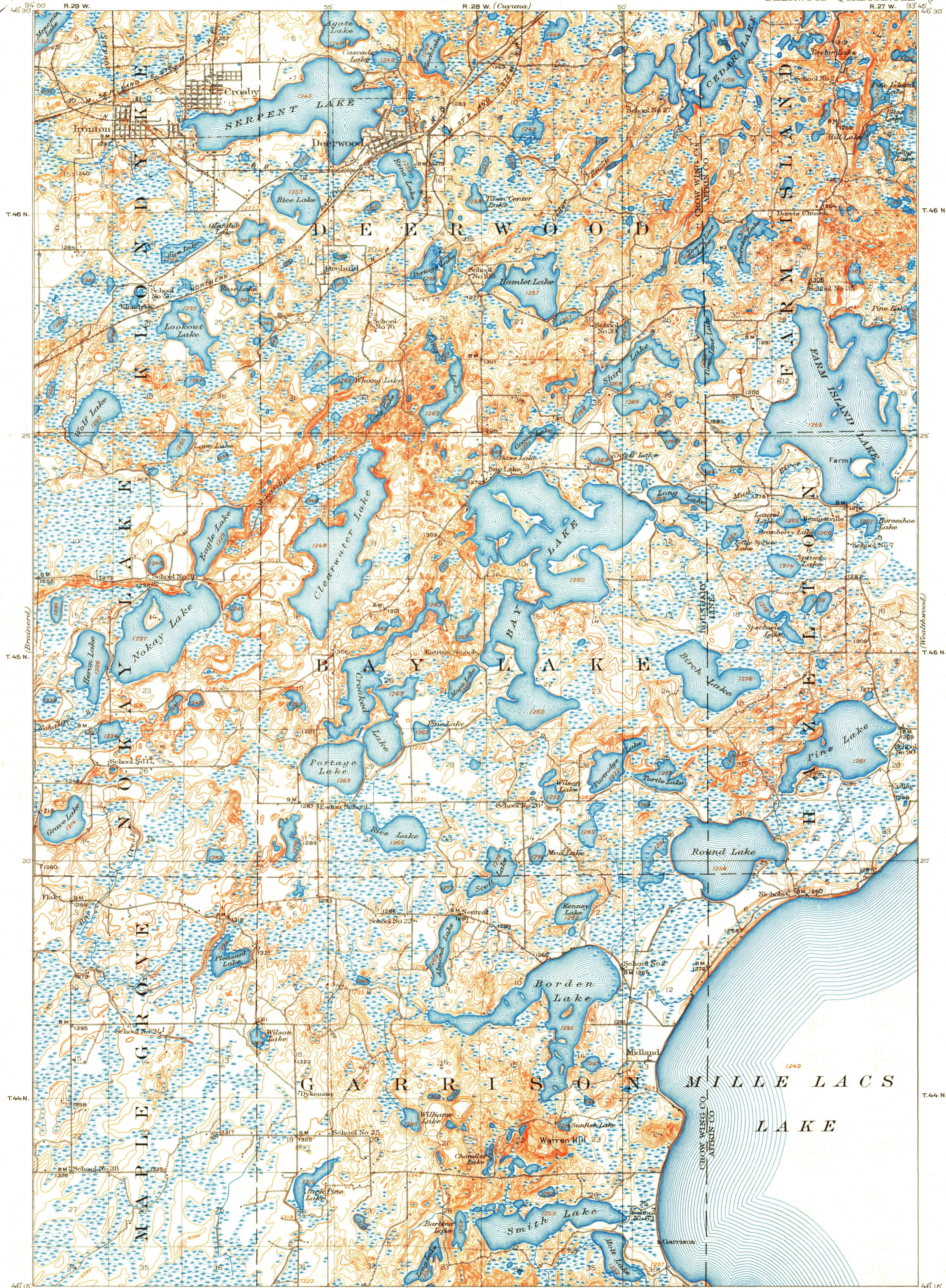
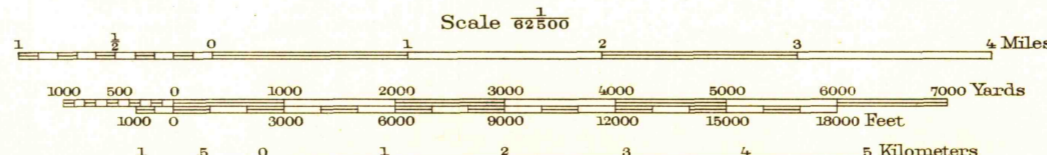


U.S.G.S.  
**FILE COPY**  
Inspection and Editing.



R.B. Marshall, Chief Geographer.  
W.H. Herron, Geographer in charge.  
Topography by C.L. Sadler, O.H. Nelson, E.L. Hain,  
F.B. Barrett, J.H. Wilson, L.B. Roberts and W.A. Reiter.  
Control by E.L. McNair and J.M. Ray.  
Surveyed in 1912.  
SURVEYED IN COOPERATION WITH THE STATE OF MINNESOTA.



Contour interval 10 feet  
Datum is mean sea level

U.S.G.S.  
**FILE COPY**  
Inspection and Editing.

U.S.G.S.  
**Historical File**  
Topographic Division

MINN  
DEERWOOD  
N4615-W9345/15

Approximate Mean  
Declination 1912.

Edition of June 1914, reprinted 1949  
Polyconic projection.

U.S.G.S.  
**FILE COPY**  
Inspection and Editing.