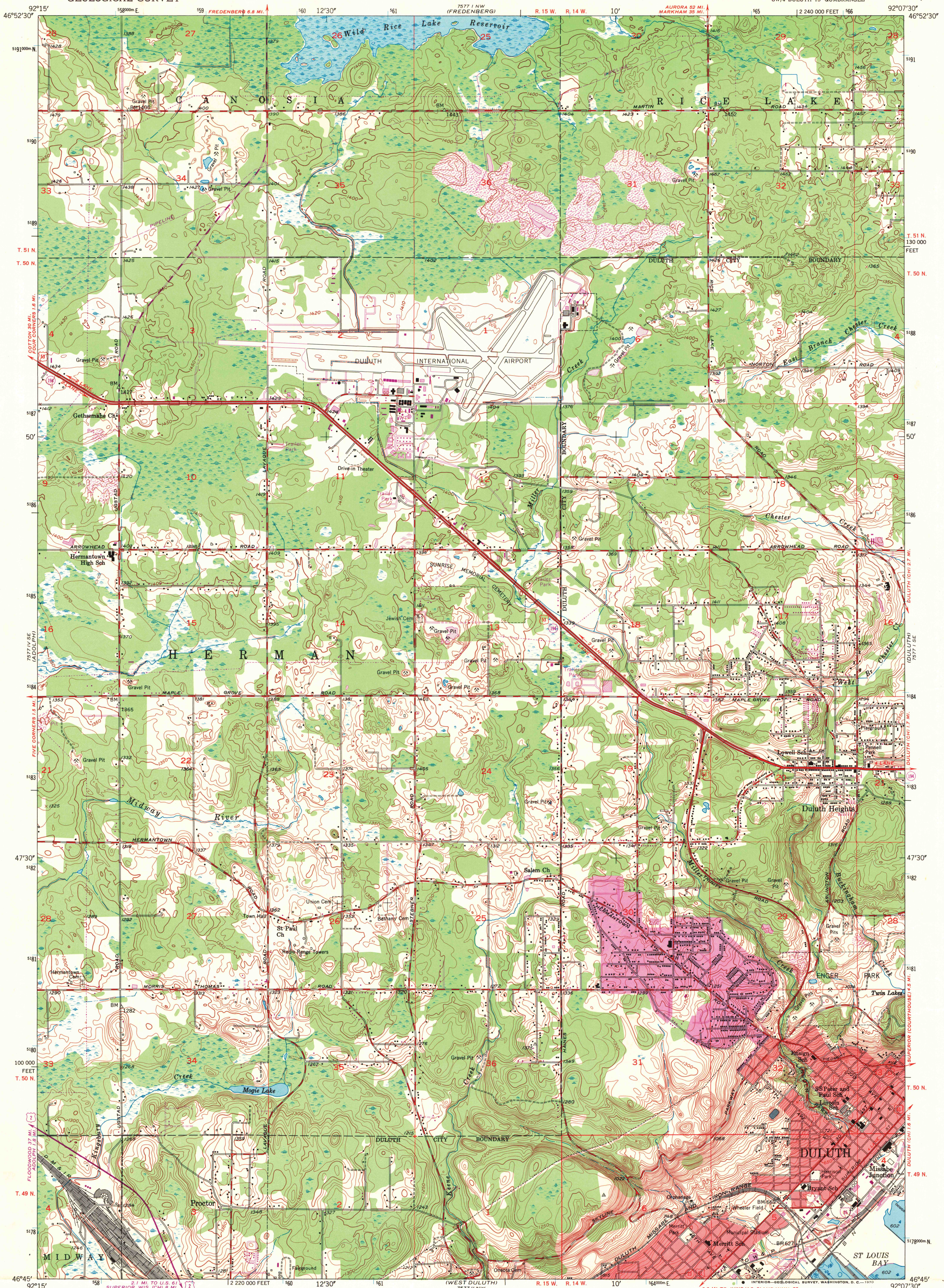
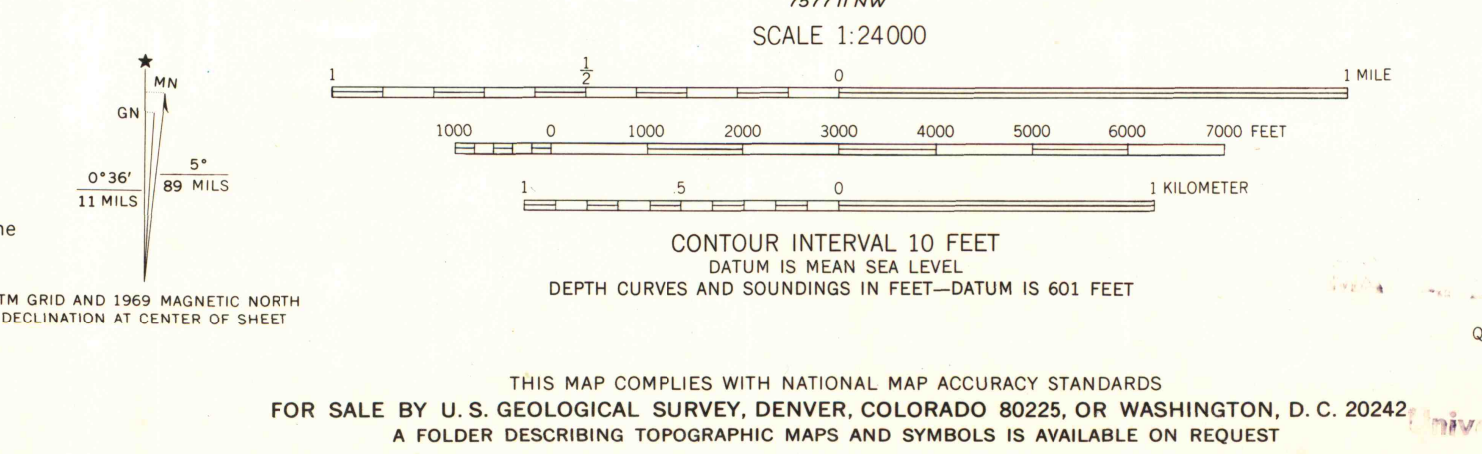


UNITED STATES
DEPARTMENT OF THE INTERIOR
GEOLOGICAL SURVEY

DULUTH HEIGHTS QUADRANGLE
MINNESOTA—ST. LOUIS CO.
7.5 MINUTE SERIES (TOPOGRAPHIC)
SW/4 DULUTH 15' QUADRANGLE



Mapped, edited, and published by the Geological Survey
Control by USGS and USC&GS
Topography from aerial photographs by photogrammetric methods
Aerial photographs taken 1952. Field check 1953
Hydrography from U. S. Lake Survey Chart 966 (1:15,000)
Polyconic projection. 1927 North American datum
10,000-foot grid based on Minnesota coordinate system, north zone
1000-meter Universal Transverse Mercator grid ticks,
zone 15; shown in blue
Red tint indicates areas in which only
landmark buildings are shown
Revisions shown in purple compiled in cooperation with the
State of Minnesota from aerial photographs taken 1969
This information not field checked
Purple tint indicates extension of urban areas



ROAD CLASSIFICATION

Heavy-duty	4 LANE 6 LANE	Light-duty
Medium-duty	4 LANE 6 LANE	Unimproved dirt

U. S. Route Interstate Route State Route

DULUTH HEIGHTS, MINN.
SW/4 DULUTH 15' QUADRANGLE
N4645—W9207.5/7.5

1971

1953
PHOTOREVISED 1969

AMS 7577 1 CW. EDITION 1970

Added to cross bottom 4-14-00 AH