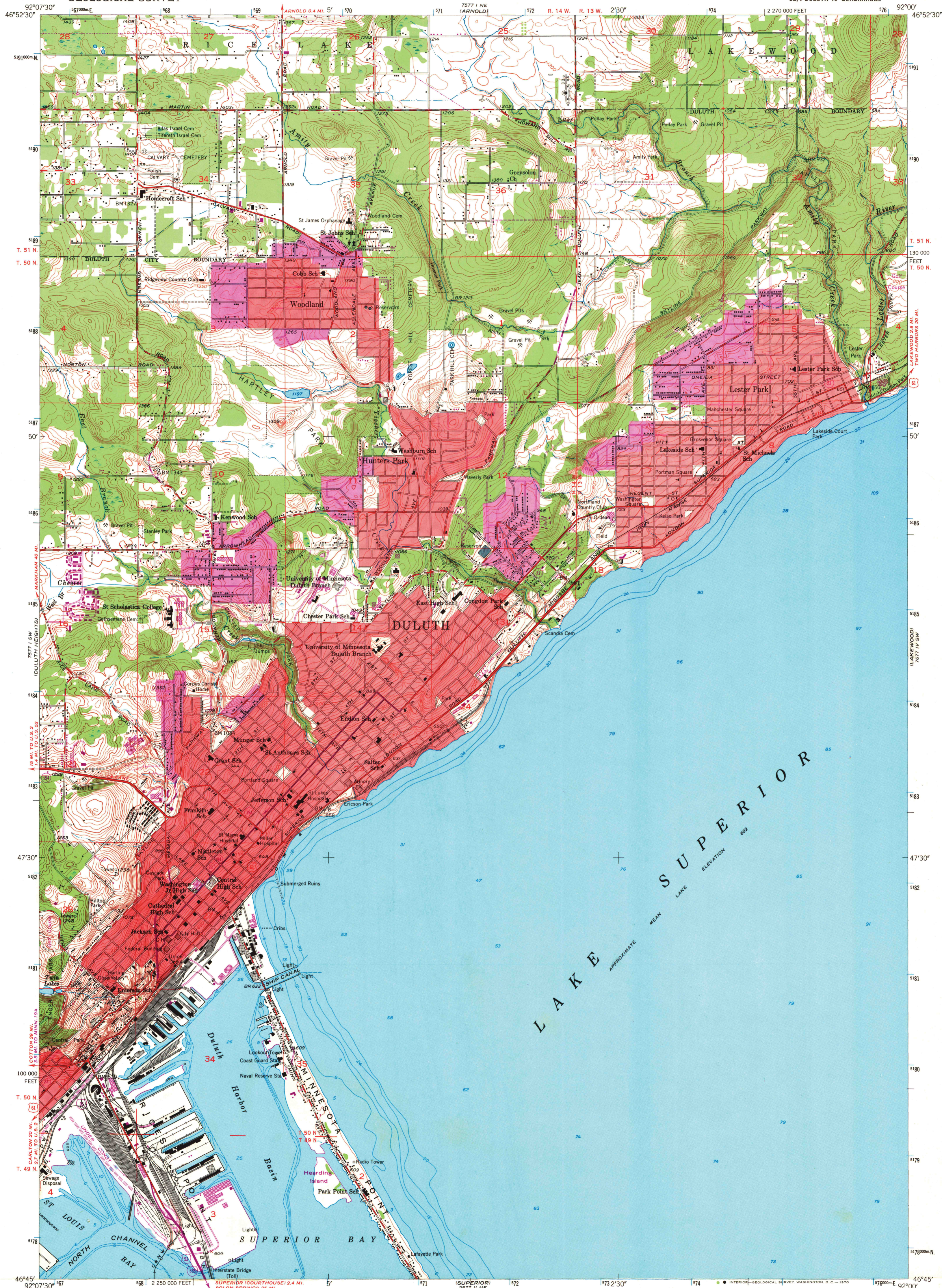


UNITED STATES
DEPARTMENT OF THE INTERIOR
GEOLOGICAL SURVEY

DULUTH QUADRANGLE
MINNESOTA-ST. LOUIS CO.
7.5 MINUTE SERIES (TOPOGRAPHIC)
SE/4 DULUTH 15' QUADRANGLE

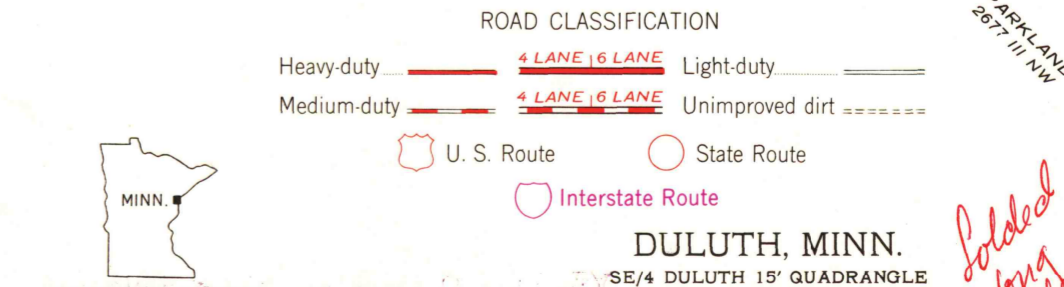
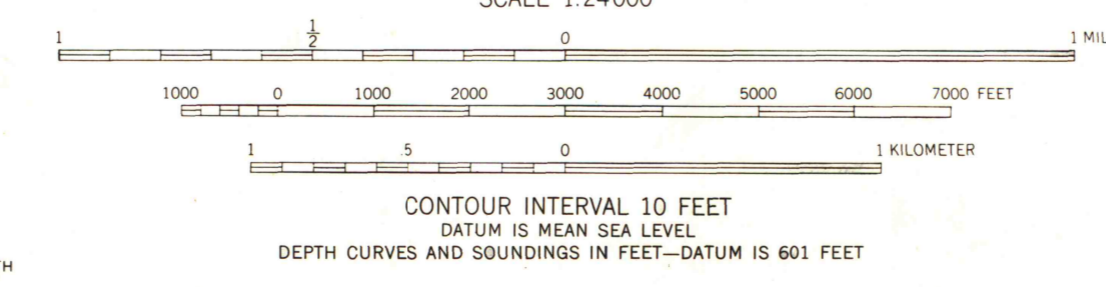
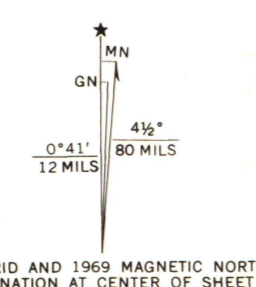


Mapped, edited, and published by the Geological Survey

Control by USGS, USC&GS, and U. S. Lake Survey
Topography from aerial photographs by multiplex methods
Aerial photographs taken 1952. Field check 1953
Hydrography from U. S. Lake Survey Charts 96 (1:120 000)
and 966 (1:15 000)

Polyconic projection. 1927 North American datum
10,000-foot grid based on Minnesota coordinate system, north zone
1000-meter Universal Transverse Mercator grid ticks,
zone 15, shown in blue

Red tint indicates areas in which only landmark buildings are shown
Revisions shown in purple compiled in cooperation with the
State of Minnesota from aerial photographs taken 1969
This information not field checked
Purple tint indicates extension of urban areas



DULUTH, MINN.
SE/4 DULUTH 15' QUADRANGLE
N4645-W9200/7.5
PHOTOREVISED 1969

Added along left side and bottom 4-14-00 H

THIS MAP COMPLIES WITH NATIONAL MAP ACCURACY STANDARDS
FOR SALE BY U. S. GEOLOGICAL SURVEY, DENVER, COLORADO 80225 OR WASHINGTON, D. C. 20242
A FOLDER DESCRIBING TOPOGRAPHIC MAPS AND SYMBOLS IS AVAILABLE ON REQUEST

17 1971
1953