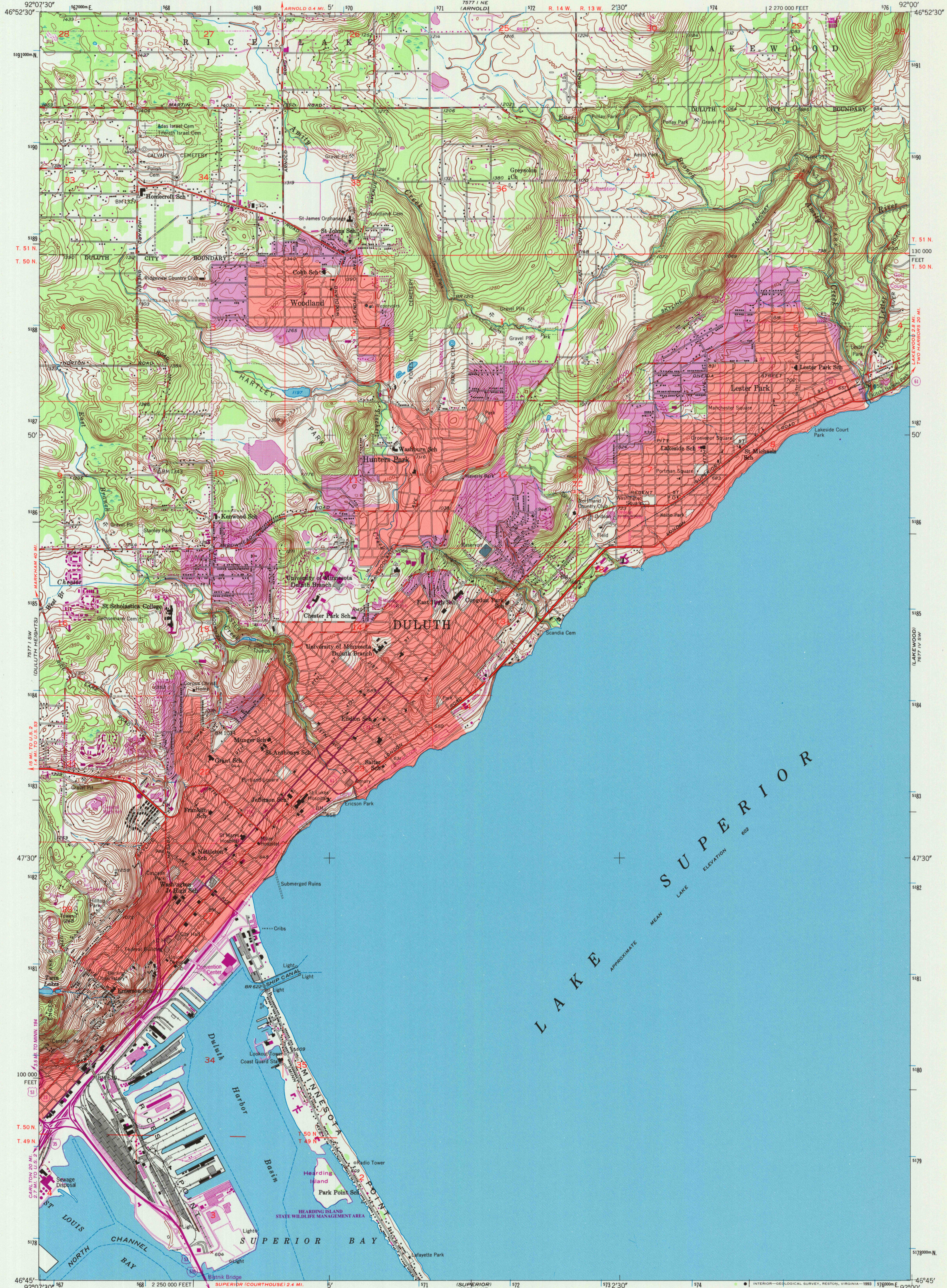
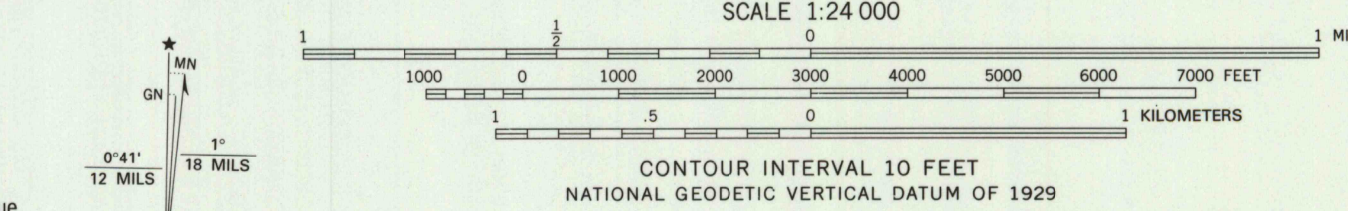


UNITED STATES  
DEPARTMENT OF THE INTERIOR  
GEOLOGICAL SURVEY

DULUTH QUADRANGLE  
MINNESOTA-ST. LOUIS CO.  
7.5 MINUTE SERIES (TOPOGRAPHIC)  
SE/4 DULUTH 15' QUADRANGLE



Produced by the United States Geological Survey  
Control by USGS, NOS/NOAA, and U.S. Lake Survey  
Topography by photogrammetric methods from aerial photographs taken 1952. Field checked 1953  
Projection and 10,000-foot grid ticks: Minnesota coordinate system, north zone (Lambert conformal conic)  
1000-meter Universal Transverse Mercator grid ticks, zone 15, shown in blue 1927 North American Datum (NAD 27)  
North American Datum of 1983 (NAD 83) is shown by dashed corner ticks. The values of the shift between NAD 27 and NAD 83 for 7.5-minute intersections are given in USGS Bulletin 1875  
Red tint indicates areas in which only landmark buildings are shown  
Fine red dashed lines indicate selected fence and field lines where generally visible on aerial photographs. This information is unchecked  
Purple tint indicates extension of urban area



COMPLIES WITH U.S. GEOLOGICAL SURVEY STANDARDS FOR SPATIAL ACCURACY - CLASS 2  
FOR SALE BY U.S. GEOLOGICAL SURVEY, DENVER, COLORADO 80225, OR RESTON, VIRGINIA 22092  
A FOLDER DESCRIBING TOPOGRAPHIC MAPS AND SYMBOLS IS AVAILABLE ON REQUEST

ROAD CLASSIFICATION

Primary highway, hard surface	Light-duty road, hard or improved surface
Secondary highway, hard surface	Unimproved road
Interstate Route	U.S. Route
	State Route



**DULUTH, MINN.**  
SE/4 DULUTH 15' QUADRANGLE  
46092-G1-TF-024  
1953  
REVISED 1993  
DMA 7577 I SE - SERIES V872

