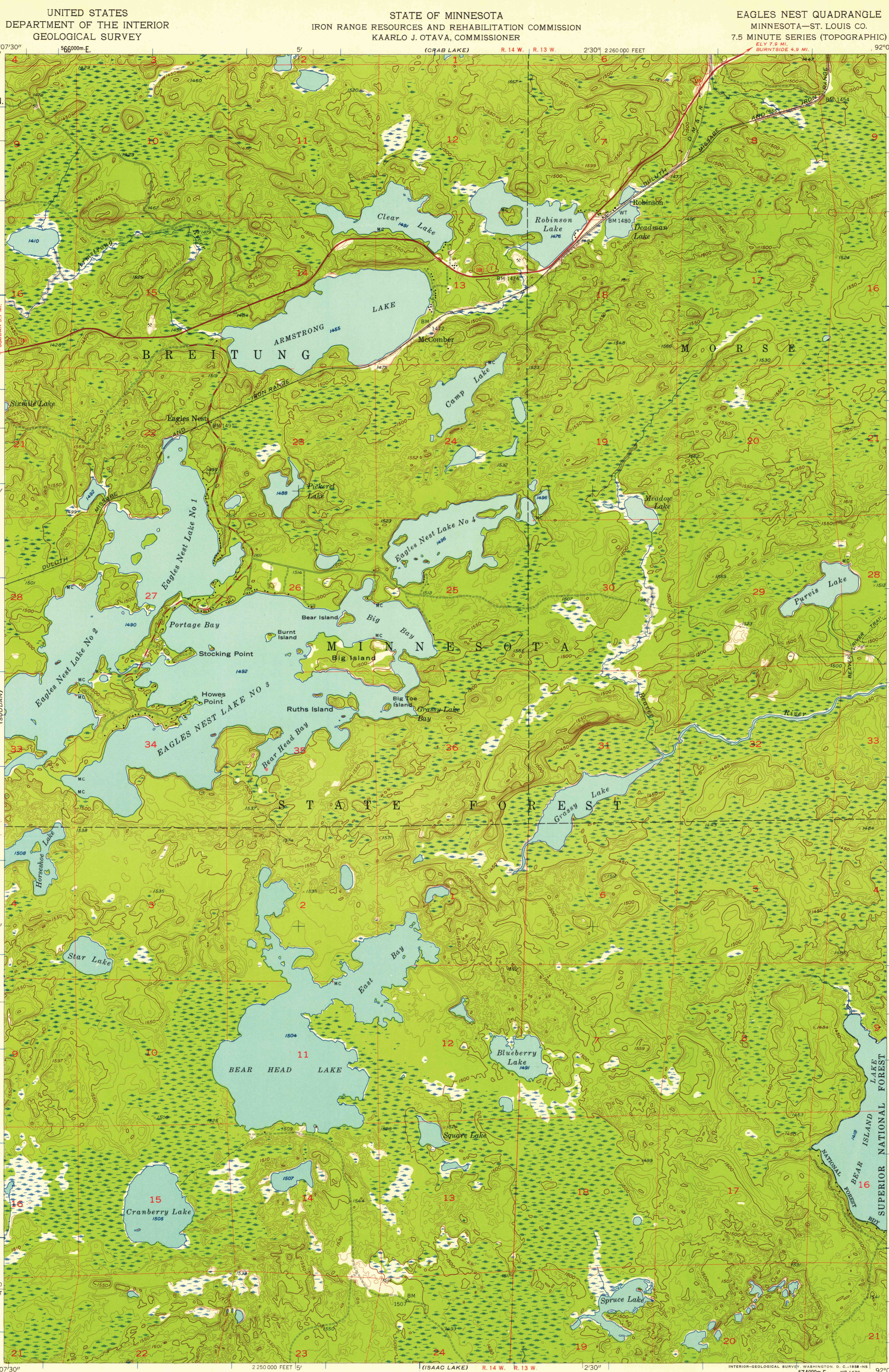


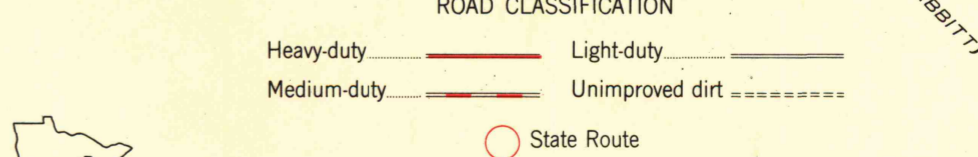
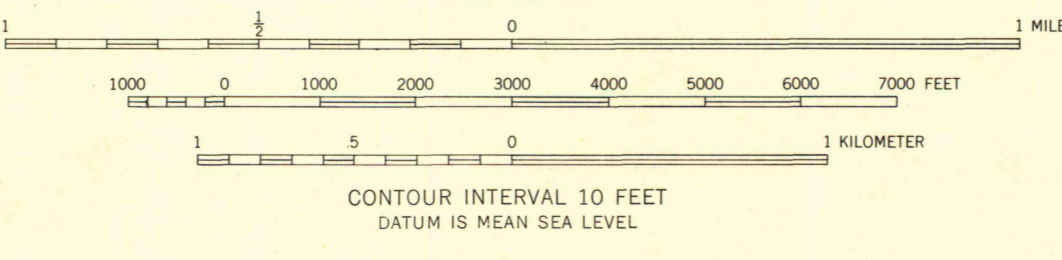
(CRAB LAKE)  
92°07'30"  
47°52'30"  
5302000 N.  
5660000 E.  
50'  
50'  
T. 62 N.  
T. 61 N.  
47°30'  
46000 FEET  
47°45'  
92°07'30"  
(EMBARASSA)



EAGLES NEST QUADRANGLE  
MINNESOTA-ST. LOUIS CO.  
7.5 MINUTE SERIES (TOPOGRAPHIC)  
ELY 7.9 MI.  
BURNTSIDE 4.9 MI.  
92°00'  
47°52'30"  
500000 FEET  
ELY 1:62,500  
ELY 1:62,500  
T. 62 N.  
T. 61 N.  
47°30'  
46000 FEET  
47°45'  
92°00'  
(GABRIEL)

Mapped, edited, and published by the Geological Survey  
Control by USGS and USC&GS  
Topography from aerial photographs by Kelsh plotter  
Aerial photographs taken 1954. Field check 1956  
Polyconic projection. 1927 North American datum  
10,000-foot grid based on Minnesota coordinate system, north zone  
1000-meter Universal Transverse Mercator grid ticks,  
zone 15, shown in blue  
Unchecked elevations are shown in brown  
Dashed land lines indicate approximate locations

TRUE NORTH  
MAGNETIC NORTH  
APPROXIMATE MEAN  
DECLINATION, 1956



EAGLES NEST, MINN.  
N 4745-W 9200/7.5  
1956

THIS MAP COMPLIES WITH NATIONAL MAP ACCURACY STANDARDS  
FOR SALE BY U. S. GEOLOGICAL SURVEY, DENVER 2, COLORADO OR WASHINGTON 25, D. C.  
A FOLDER DESCRIBING TOPOGRAPHIC MAPS AND SYMBOLS IS AVAILABLE ON REQUEST

MAP AND AIR PHOTO LIBRARY  
University of Wisconsin