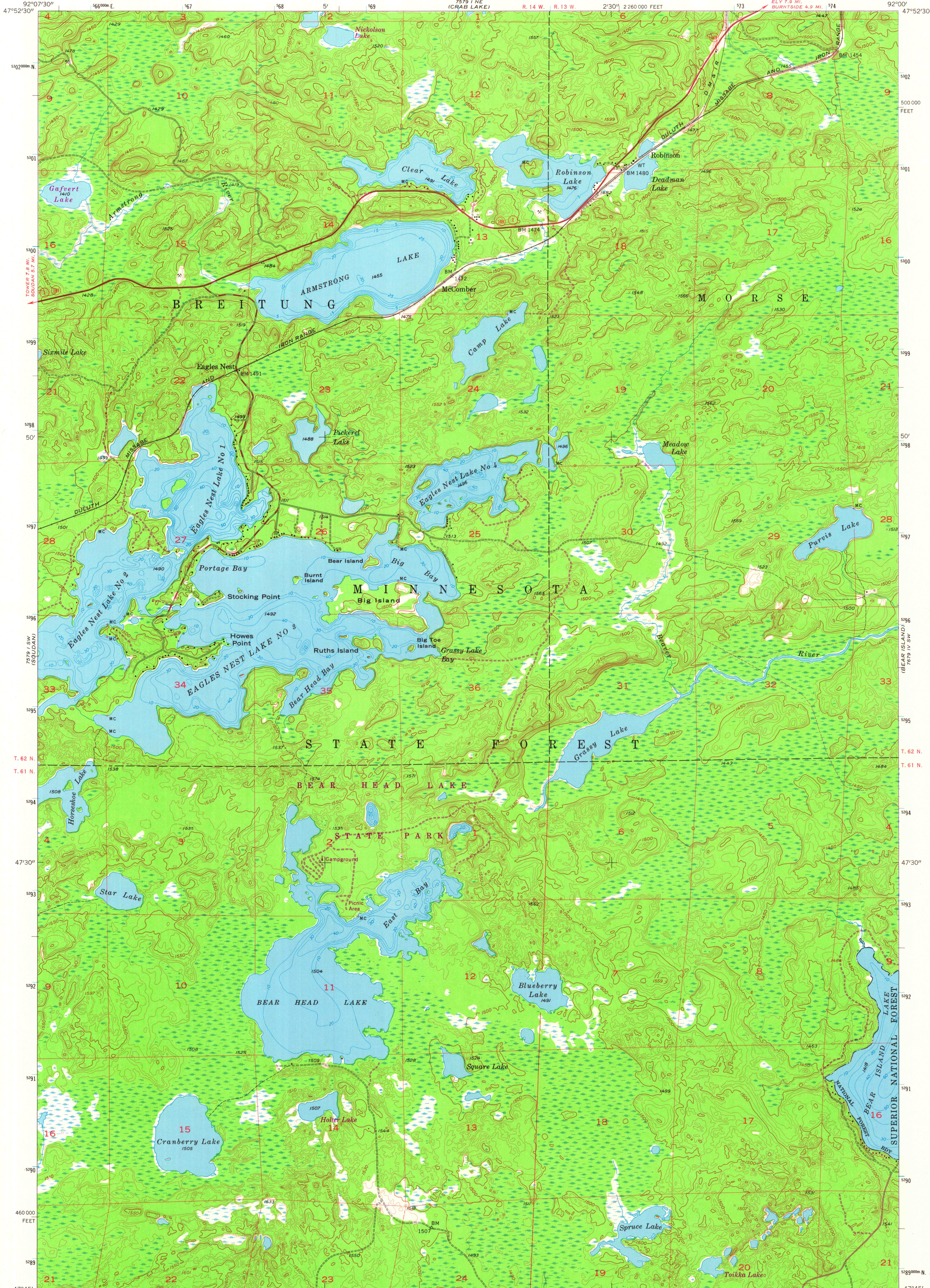
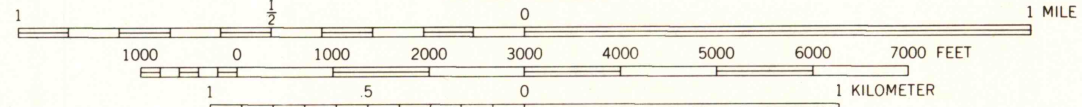
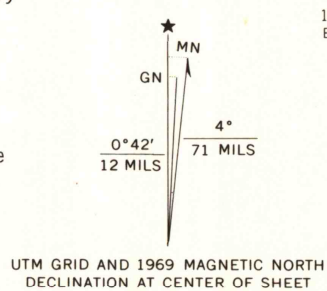


7579 1 NE  
(CRAB LAKE)

7579 1 NW  
(SHABAWA LAKE)



Mapped, edited, and published by the Geological Survey  
Control by USGS and USC&GS  
Topography from aerial photographs by Kelsh plotter  
Aerial photographs taken 1954. Field check 1956  
Polyconic projection. 1927 North American datum  
10,000-foot grid based on Minnesota coordinate system, north zone  
1000-meter Universal Transverse Mercator grid ticks,  
zone 15, shown in blue  
Depth curves compiled from charts furnished  
by Minnesota Department of Conservation  
Revisions shown in purple compiled from aerial photographs  
taken 1969. This information not field checked



CONTOUR INTERVAL 10 FEET  
NATIONAL GEODETIC VERTICAL DATUM OF 1929

THIS MAP COMPLIES WITH NATIONAL MAP ACCURACY STANDARDS  
FOR SALE BY U. S. GEOLOGICAL SURVEY, RESTON, VIRGINIA 22092  
A FOLDER DESCRIBING TOPOGRAPHIC MAPS AND SYMBOLS IS AVAILABLE ON REQUEST



USGS  
Historical File  
Topographic Division

ROAD CLASSIFICATION  
Heavy-duty ——— Light-duty ———  
Medium-duty ——— Unimproved dirt - - - - -  
○ State Route

EAGLES NEST, MINN.  
N4745—W9200/7.5

1956  
PHOTOREVISED 1969  
AMS 7579 1 SE—SERIES V872

MAR 22 1978  
5900