

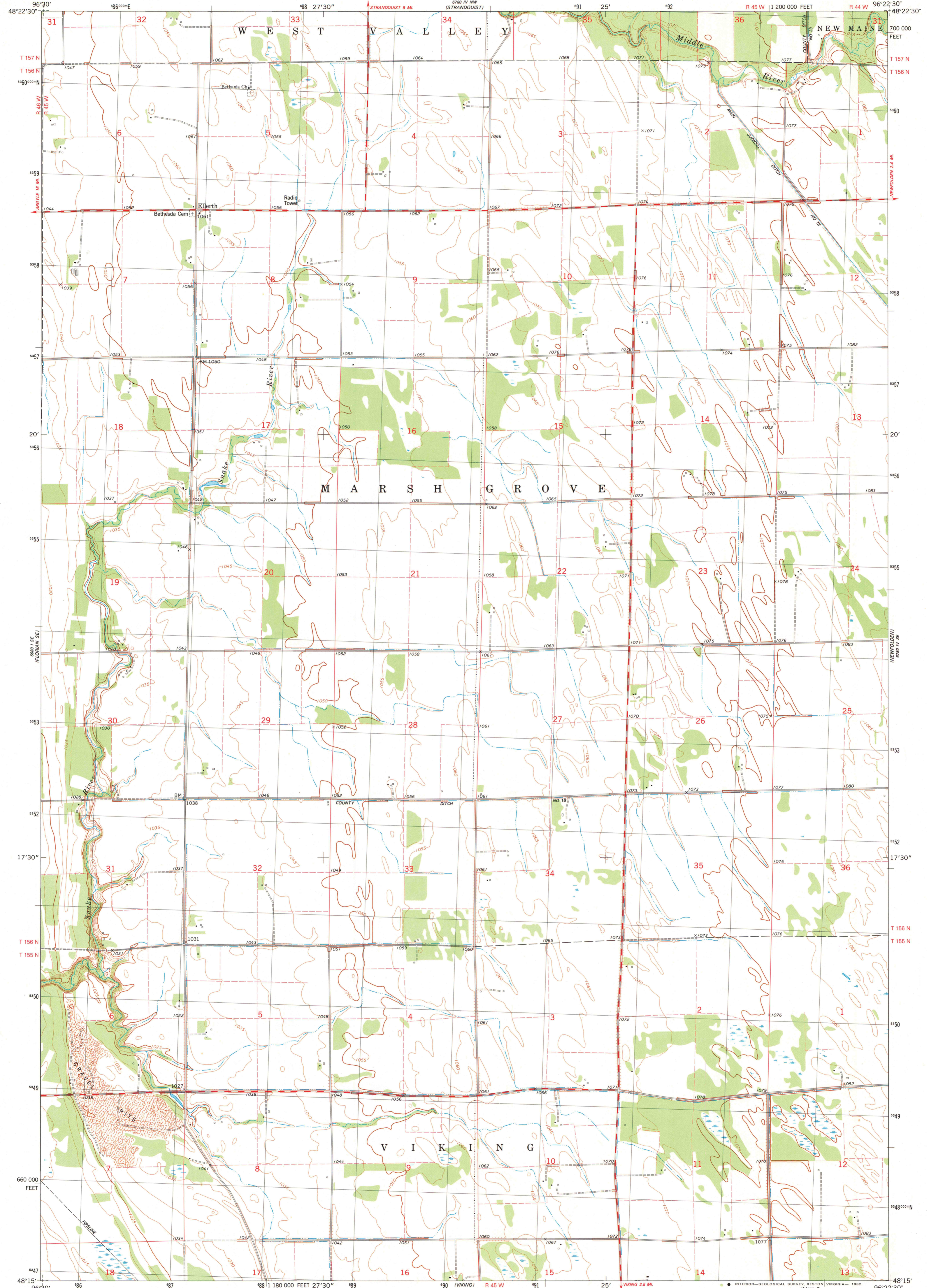
660 000 FEET
1:250 000

UNITED STATES
DEPARTMENT OF THE INTERIOR
GEOLOGICAL SURVEY

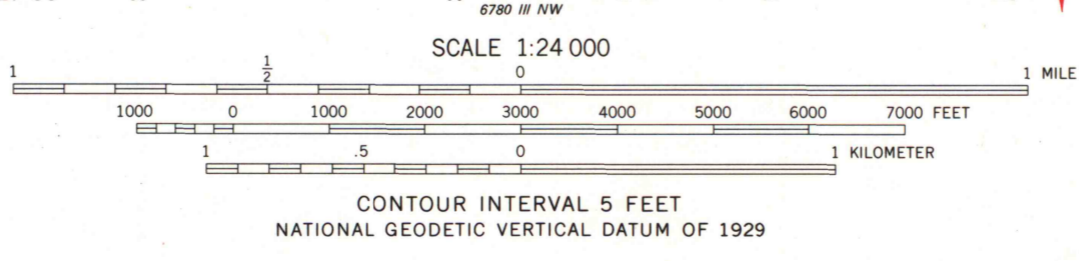
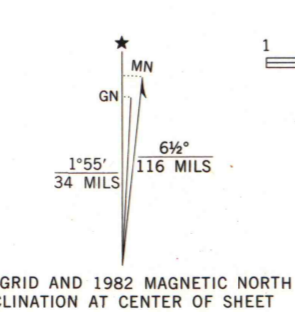
STATE OF MINNESOTA
DEPARTMENT OF ADMINISTRATION

ELLERTH QUADRANGLE
MINNESOTA-MARSHALL CO.
7.5 MINUTE SERIES (TOPOGRAPHIC)
SW/4 NEWFOLDEN 15' QUADRANGLE

660 000 FEET
1:250 000



Mapped, edited, and published by the Geological Survey
Control by USGS and NOS/NOAA
Topography by photogrammetric methods from aerial photographs taken 1977. Field checked 1978. Map edited 1982
Projection and 10,000-foot grid ticks: Minnesota coordinate system, north zone (Lambert conformal conic)
1000-meter Universal Transverse Mercator grid, zone 14 1927 North American Datum
To place on the predicted North American Datum 1983 move the projection lines 5 meters north and 23 meters east as shown by dashed corner ticks
Fine red dashed lines indicate selected fence and field lines where generally visible on aerial photographs
This information is unchecked



ROAD CLASSIFICATION

Primary highway, hard surface	Light-duty road, hard or improved surface
Secondary highway, hard surface	Unimproved road
Interstate Route	U. S. Route
	State Route



ELLERTH, MINN.
SW/4 NEWFOLDEN 15' QUADRANGLE
N4815-W9622.5/7.5

1982
DMA 6780 IV SW-SERIES V872

MAP AND AIR PHOTO LIBRARY
JAN 20 1983
University of Wisconsin
Madison