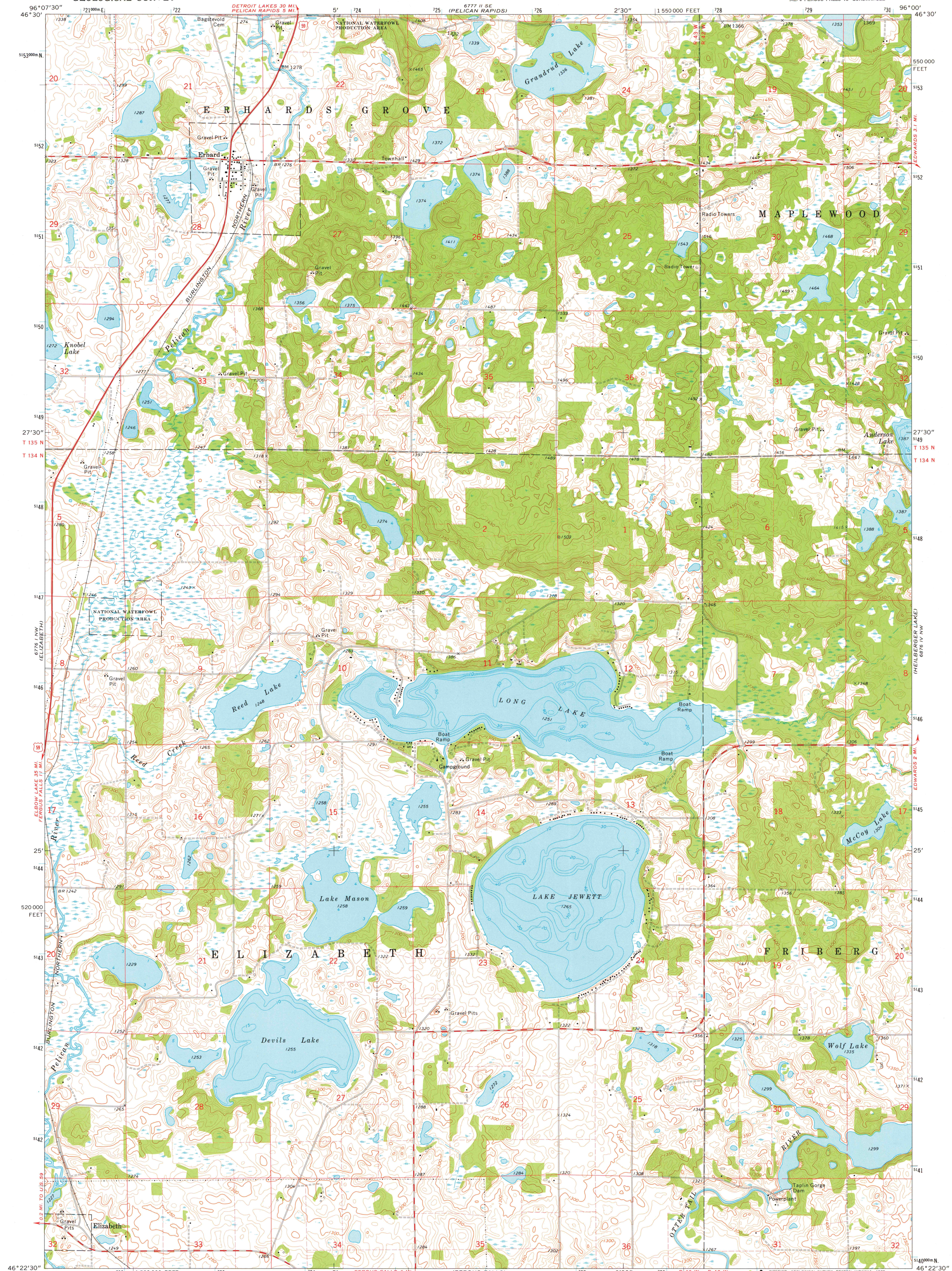
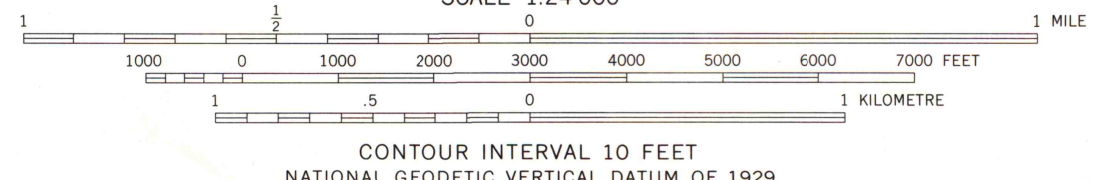
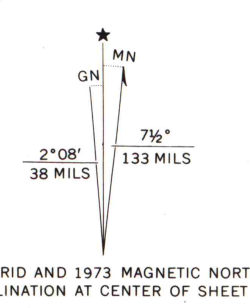


STATE OF MINNESOTA
DEPARTMENT OF ADMINISTRATION

STATE OF MINNESOTA
DEPARTMENT OF ADMINISTRATION



Mapped, edited, and published by the Geological Survey
Control by USGS and NGS/NOAA
Topography by photogrammetric methods from aerial photographs taken 1972. Field checked 1973
Hydrography compiled from information furnished by Minnesota Department of Natural Resources
Projection and 10,000-foot grid ticks: Minnesota coordinate system, central zone (Lambert conformal conic)
1000-metre Universal Transverse Mercator grid ticks, zone 14, shown in blue. 1927 North American datum
Fine red dashed lines indicate selected fence and field lines where generally visible on aerial photographs
This information is unchecked



ROAD CLASSIFICATION

Primary highway, hard surface	Light-duty road, hard or improved surface
Secondary highway, hard surface	Unimproved road
Interstate Route	U. S. Route
	State Route



MAP AND AIR PHOTO LIBRARY
FEB 9 - 1976

ERHARD, MINN.
NE/4 FERUS FALLS 15' QUADRANGLE
N4622.5—W9600/7.5
1973

THIS MAP COMPLIES WITH NATIONAL MAP ACCURACY STANDARDS
FOR SALE BY U. S. GEOLOGICAL SURVEY, RESTON, VIRGINIA 22092
A FOLDER DESCRIBING TOPOGRAPHIC MAPS AND SYMBOLS IS AVAILABLE ON REQUEST