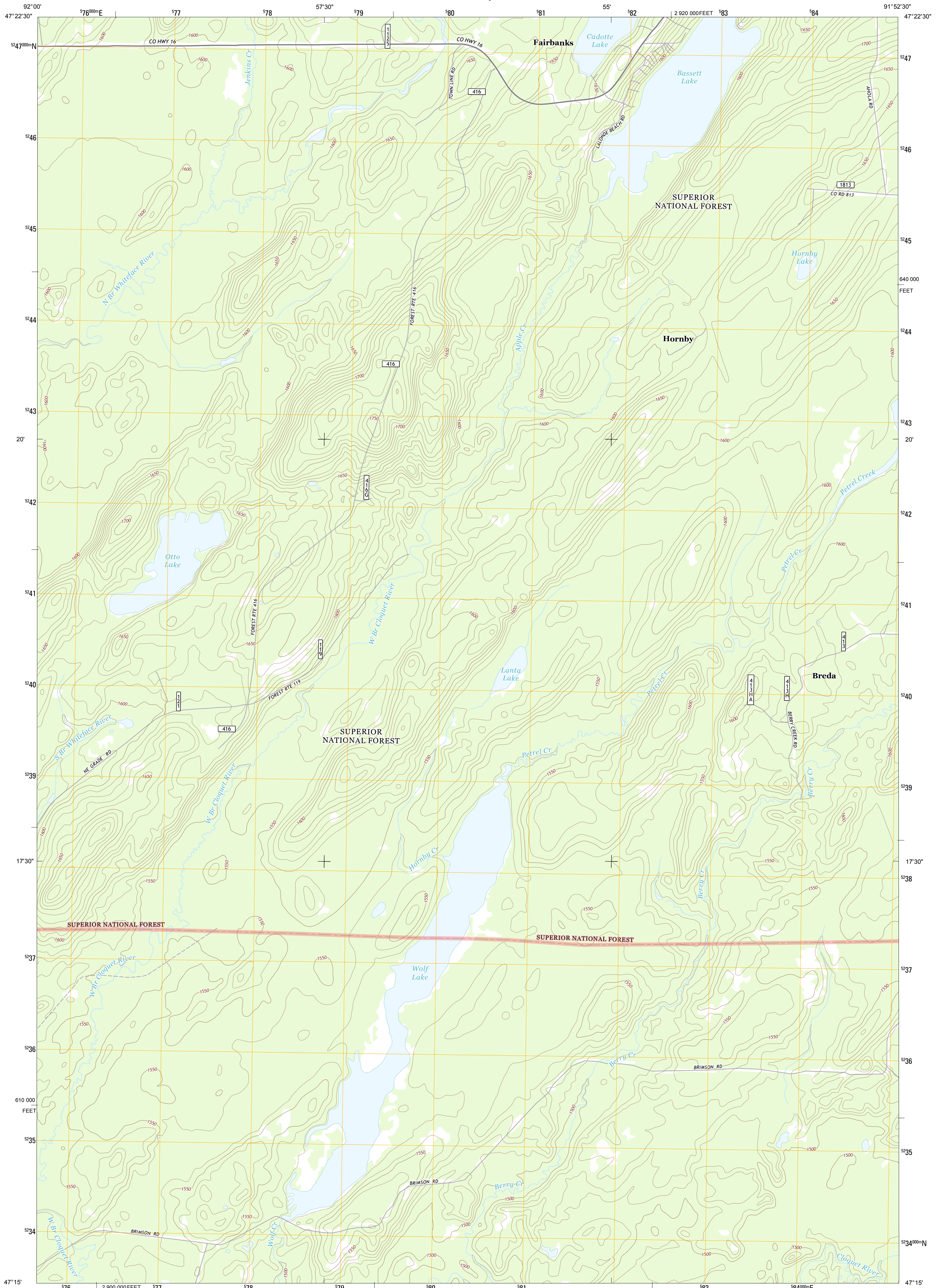




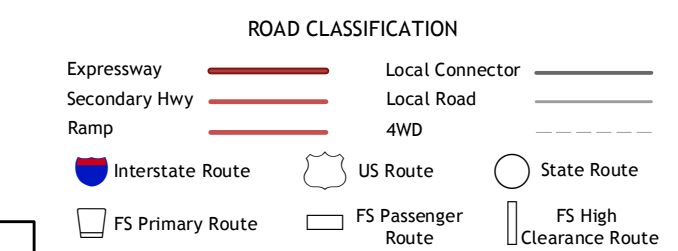
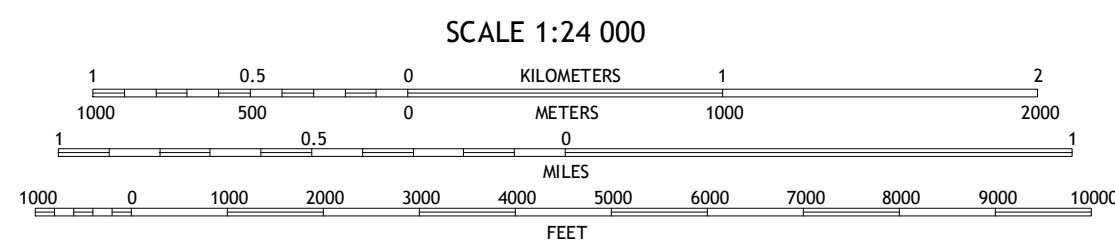
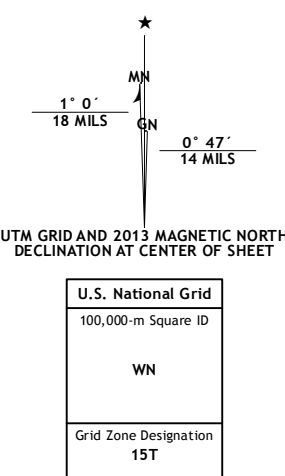
U.S. DEPARTMENT OF THE INTERIOR
U. S. GEOLOGICAL SURVEY



FAIRBANKS QUADRANGLE
MINNESOTA-ST. LOUIS CO.
7.5-MINUTE SERIES



Produced by the United States Geological Survey
North American Datum of 1983 (NAD83)
World Geodetic System of 1984 (WGS84). Projection and
1 000-meter grid: Universal Transverse Mercator, Zone 15T
10 000-foot ticks: Minnesota Coordinate System of 1983 (north
zone)



Imagery.....NAIP, May 2010
Roads.....©2006-2012 TomTom
Roads within US Forest Service Lands.....FS Topo Data
with limited Forest Service updates, 2013
Names.....GNIS, 2013
Hydrography.....National Hydrography Dataset, 2010
Contours.....National Elevation Dataset, 2007
Boundaries.....Census, IBWC, IBC, USGS, 1972 - 2012

| | |
|---|-----|
| U.S. National Grid 100,000-m Square ID | WN |
| Grid Zone Designation | 15T |

CONTOUR INTERVAL 10 FEET
NORTH AMERICAN VERTICAL DATUM OF 1988
This map was produced to conform with the
National Geospatial Program US Topo Product Standard, 2011.
A metadata file associated with this product is draft version 0.6.11

| | | |
|--------------|----------------|-----------|
| Bird Lake | Skiibo | Toimi |
| Harris Lake | Fairbanks | Brimson |
| Boulder Lake | Piquoywan Lake | King Lake |

Check with local Forest Service unit
for current travel conditions and restrictions.

FAIRBANKS, MN
2013

ADJOINING 7.5' QUADRANGLES