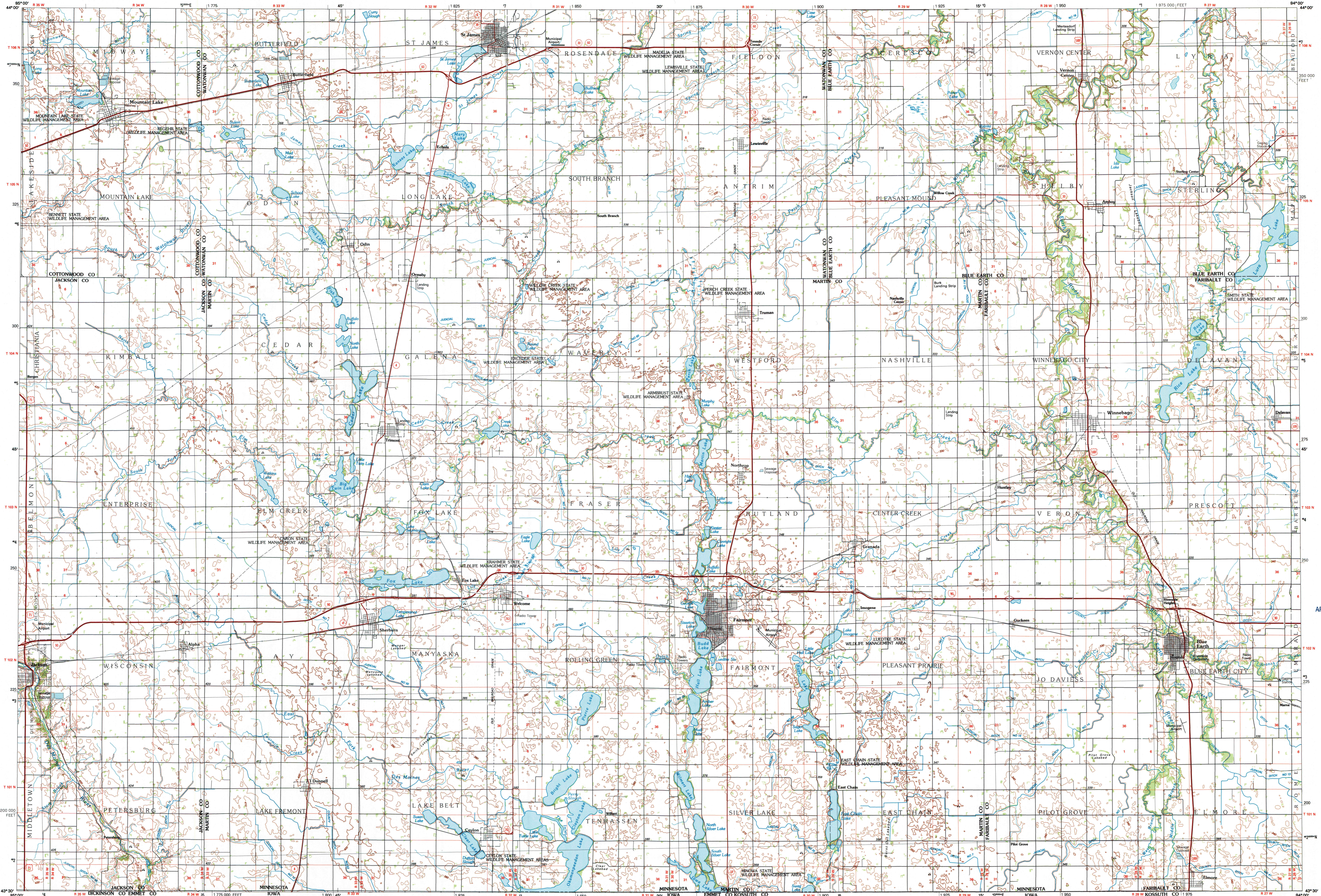


FAIRMONT, MINNESOTA-IOWA

30 X 60 MINUTE SERIES (TOPOGRAPHIC)



**Fairmont**  
MINNESOTA-IOWA

1:100 000-scale metric topographic map

30 X 60 MINUTE QUADRANGLE SHOWING

- Contours and elevations in meters
- Highways, roads and other manmade structures
- Water features
- Woodland areas
- Geographic names

GEOLOGICAL SURVEY

1985  
PHOTOINSPECTED 1986

Produced by the United States Geological Survey  
Compiled from USGS 1:24 000-scale topographic maps dated 1967-1979. Planimetry revised from aerial photographs taken 1973 and 1980 and other source data. Revised information not field checked. Map edited 1985.

Projection and 10 000-meter grid, zone 15, Universal Transverse Mercator  
25 000-foot grid ticks based on Minnesota coordinate system, south zone  
To place on the predicted North American Datum 1983, move the projection lines 6 meters north and 21 meters east  
There may be private inholdings within the boundaries of the National or State reservations shown on this map  
Map photoinspected using 1985-86 photographs  
No major culture or drainage changes found

CONTOUR INTERVAL 10 METERS  
NATIONAL GEODETIC VERTICAL DATUM OF 1929  
ELEVATIONS SHOWN TO THE NEAREST METER

THIS MAP COMPLIES WITH NATIONAL MAP ACCURACY STANDARDS

CONVERSION TABLE		DECLINATION DIAGRAM		ADJOINING MAPS		
Meters	Feet	Magnetic declination diagram showing 1° 00' 18" W. Magnetic declination is 1° 00' 18" W. of true declination at center of map.		1	2	3
1	3.2808			4	5	6
2	6.5617			7	8	
3	9.8425					
4	13.1234					
5	16.4042					
6	19.6850					
7	22.9659					
8	26.2467					
9	29.5275					
10	32.8084					

To convert meters to feet multiply by 3.2808  
To convert feet to meters multiply by 0.3048

1 Tracy  
2 New Linn  
3 Fairbault  
4 Wabasha  
5 Albert Lea  
6 Iowa Great Lakes  
7 Easterville  
8 Mason City

FOR SALE BY U.S. GEOLOGICAL SURVEY  
DENVER, COLORADO 80225, OR RESTON, VIRGINIA 22092

ARTHUR H. ROBINSON MAP LIBRARY  
University of Wisconsin-Madison  
R-2-20-1992

U.S. Regional  
Depository Copy  
DO NOT DISCARD

**Topographic Map Symbols**

Primary highway, hard surface	
Secondary highway, hard surface	
Light duty road, principal street, hard or improved surface	
Other road or street, trail	
Road marker, Interstate, U.S. State	
Railroad, standard gage, narrow gage	
Bridge, overpass, underpass	
Tunnel, road, railroad	
Built up area, locality, elevation	
Airport, landing field, landing strip	
National boundary	
State boundary	
County boundary	
National or State reservation boundary	
Land grant boundary	
U.S. public lands survey, range, township, section	
Range, township, section line, protected	
Power transmission line, pipeline	
Dam, dam with lock	
Cemetery, building	
Windmill, water well, spring	
Mine shaft, salt or cave, mine, quarry, gravel pit	
Campground, picnic area, U.S. location monument	
Ruins, cliff dwelling	
Distorted surface, strip mine, lava, sand	
Contours: index, intermediate, supplementary	
Bathymetric contours: index, intermediate	
Stream, lake, perennial, intermittent	
Rapids, large and small, falls, large and small	
Area to be submerged, marsh, swamp	
Land subject to controlled inundation, woodland	
Scrub, mangrove	
Orchard, vineyard	

3006-96  
SET