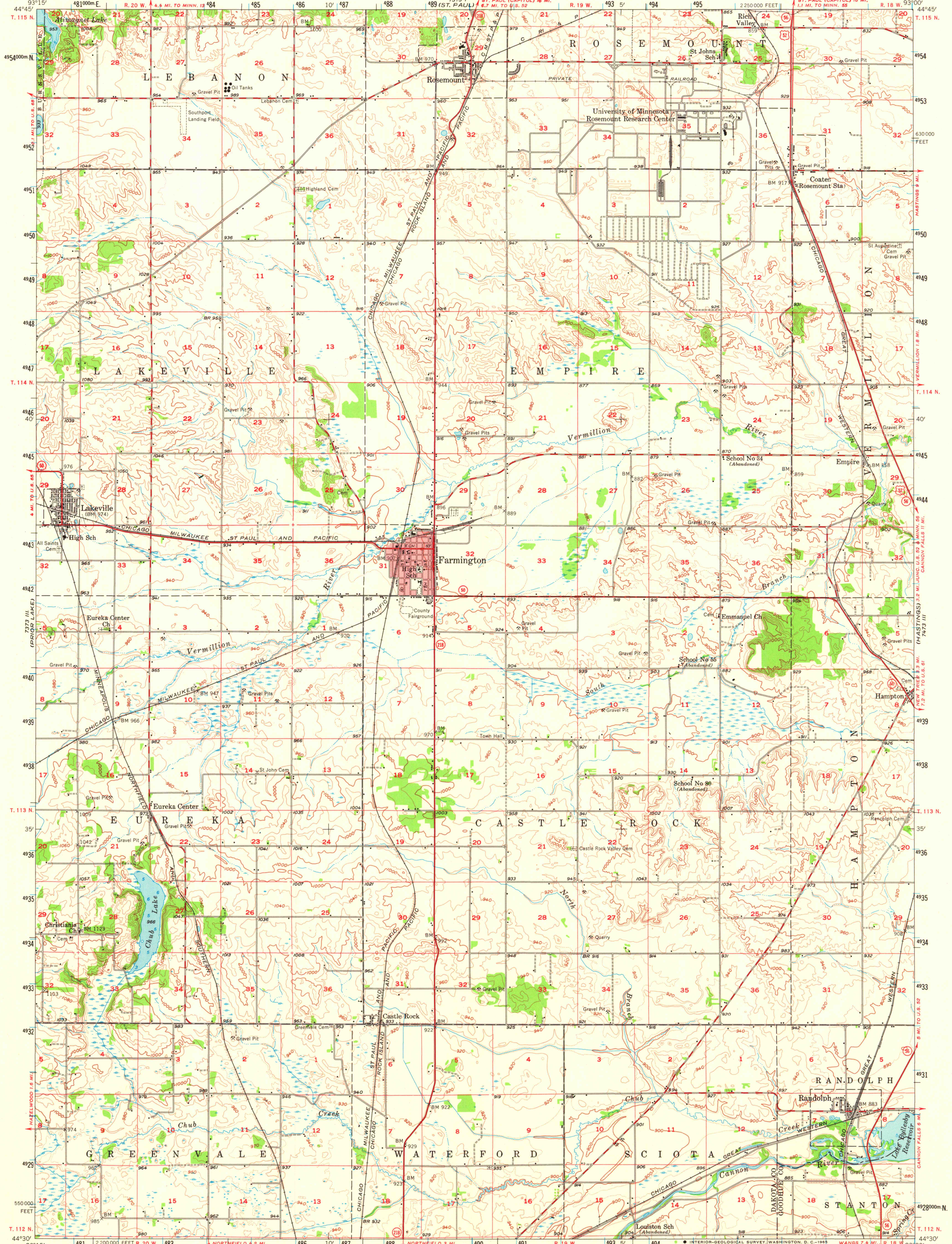
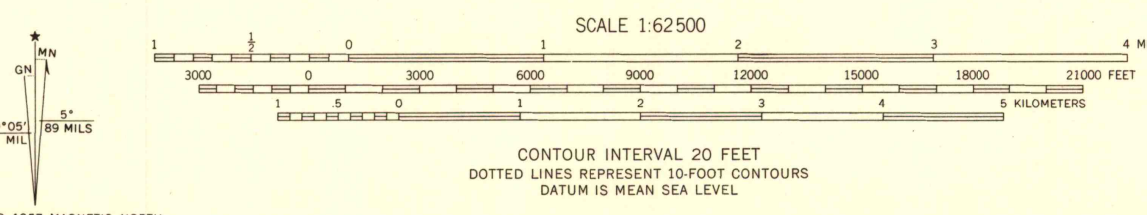


UNITED STATES  
DEPARTMENT OF THE INTERIOR  
GEOLOGICAL SURVEY

FARMINGTON QUADRANGLE  
MINNESOTA  
15 MINUTE SERIES (TOPOGRAPHIC)



Mapped, edited, and published by the Geological Survey  
Control by USGS and USC&GS  
Topography from aerial photographs by Kesh plotter  
and by planetable surveys 1957. Aerial photographs taken 1953  
Polyconic projection. 1927 North American datum  
10,000-foot grid based on Minnesota coordinate system, south zone  
1000-meter Universal Transverse Mercator grid ticks,  
zone 15, shown in blue  
Red tint indicates area in which only  
landmark buildings are shown  
Depth curves compiled from charts furnished by  
Minnesota Department of Conservation



ROAD CLASSIFICATION

Heavy-duty	Light-duty
Medium-duty	Unimproved dirt
U.S. Route	State Route



FARMINGTON, MINN.  
N4430-W9300/15

THIS MAP COMPLIES WITH NATIONAL MAP ACCURACY STANDARDS  
FOR SALE BY U.S. GEOLOGICAL SURVEY, DENVER, COLORADO 80225 OR WASHINGTON, D.C. 20242  
A FOLDER DESCRIBING TOPOGRAPHIC MAPS AND SYMBOLS IS AVAILABLE ON REQUEST

1957  
AMS 7373 II-SERIES V772