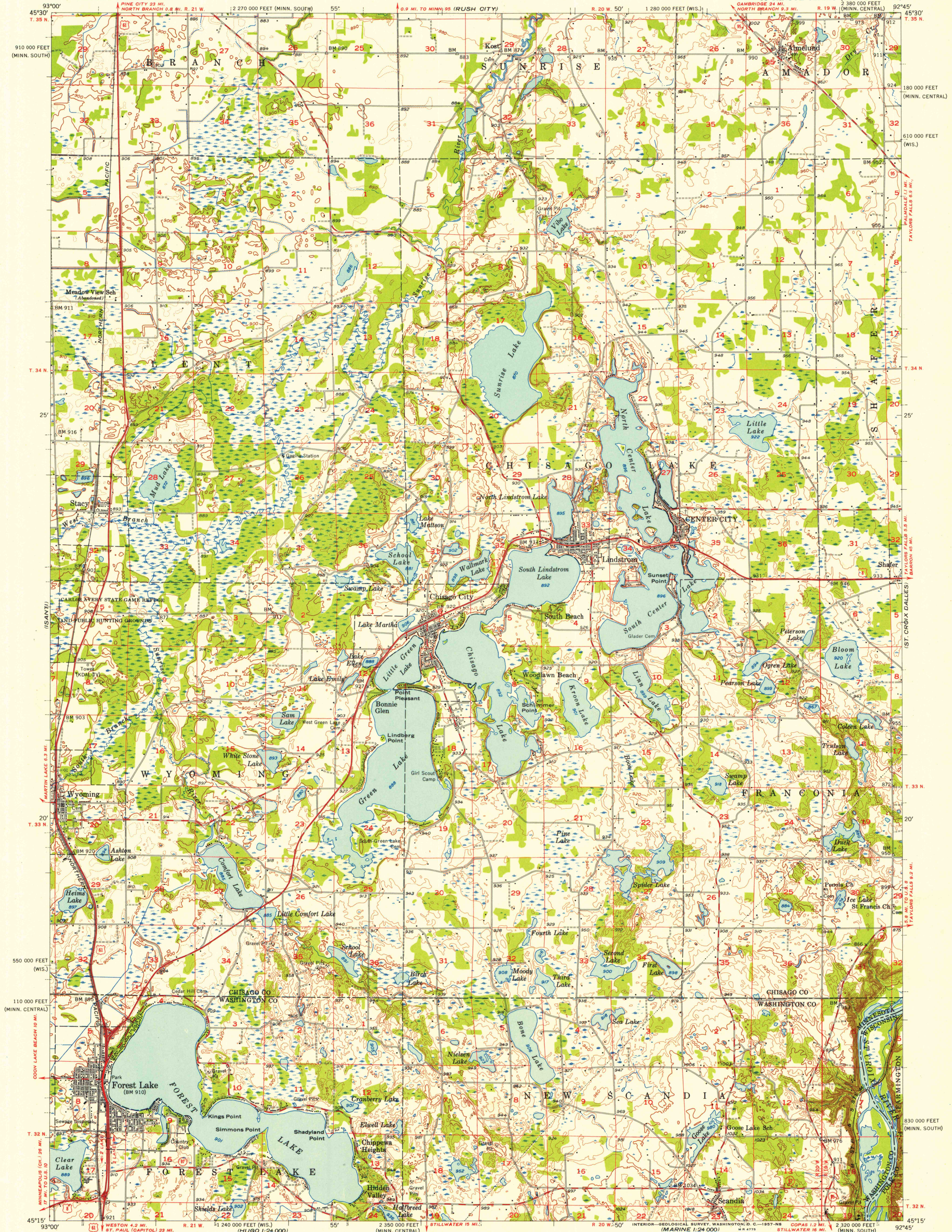
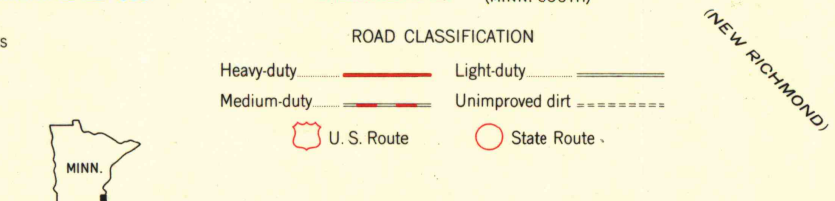
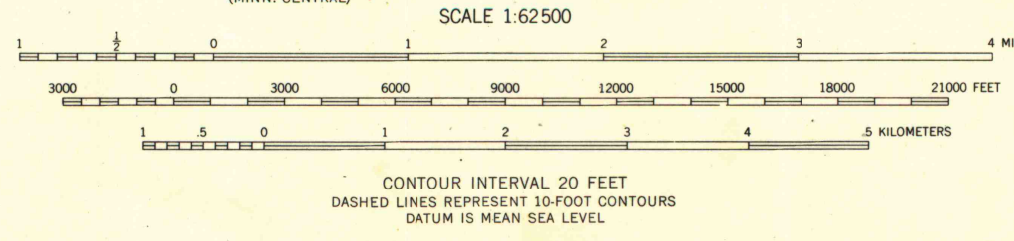


(MILLTOWN)



Maped, edited, and published by the Geological Survey  
Control by USGS and USC&GS  
Topography from aerial photographs by Kesh plotter  
Aerial photographs taken 1954. Field check 1955  
Polyconic projection. 1927 North American datum  
10,000-foot grids based on Minnesota coordinate system,  
central and south zones, and Wisconsin coordinate system,  
central zone



THIS MAP COMPLIES WITH NATIONAL MAP ACCURACY STANDARDS  
FOR SALE BY U.S. GEOLOGICAL SURVEY, DENVER 2, COLORADO OR WASHINGTON 25, D. C.  
AND BY THE WISCONSIN GEOLOGICAL AND NATURAL HISTORY SURVEY, MADISON 6, WISCONSIN  
A FOLDER DESCRIBING TOPOGRAPHIC MAPS AND SYMBOLS IS AVAILABLE ON REQUEST

UNIVERSITY OF WISCONSIN  
Department of Geography  
FOREST LAKE, MINN.-WIS.  
N4515-W9245/15  
1955

1955  
COPY  
MNI