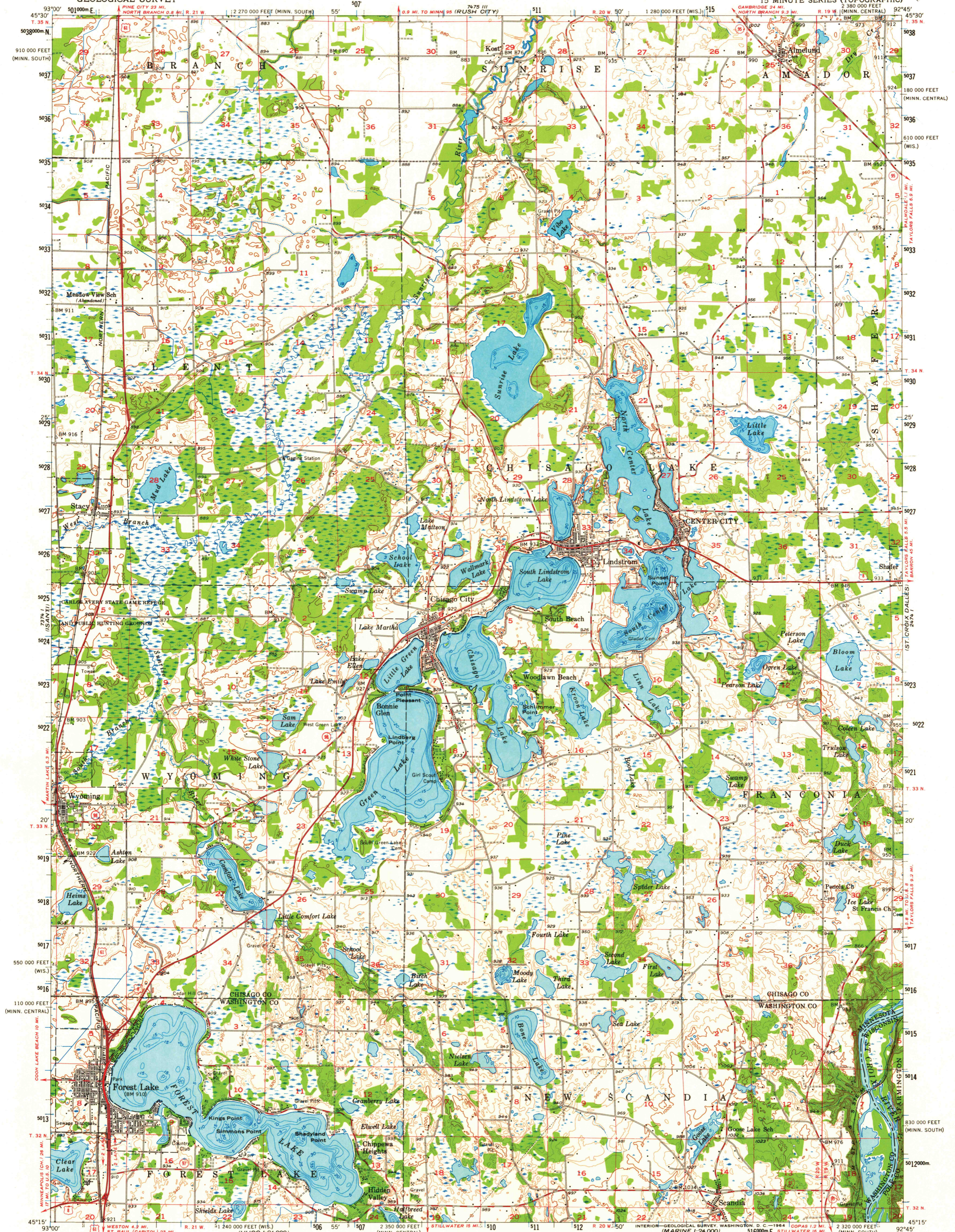


273
MILLTOWN



Mapped, edited, and published by the Geological Survey
Control by USGS and USC&GS
Topography from aerial photographs by Kelsch plotter
Aerial photographs taken 1954. Field check 1955
Polyconic projection. 1927 North American datum
10,000-foot grids based on Minnesota coordinate system,
central and south zones, and Wisconsin coordinate system,
central zone
1000-meter Universal Transverse Mercator grid ticks,
zone 15, shown in blue
Depth curves compiled from charts furnished by
Minnesota Department of Conservation

SCALE 1:62,500
CONTOUR INTERVAL 20 FEET
DASHED LINES REPRESENT 10-FOOT CONTOURS
DATUM IS MEAN SEA LEVEL

ROAD CLASSIFICATION
Heavy-duty ——— Light-duty ———
Medium-duty ——— Unimproved dirt ———
U.S. Route ——— State Route ———

QUADRANGLE LOCATION
MINN. WIS. ILL.

FOREST LAKE, MINN.-WIS.
N4515-W9245/15

1955

JAN 17 1964
2420
USGS