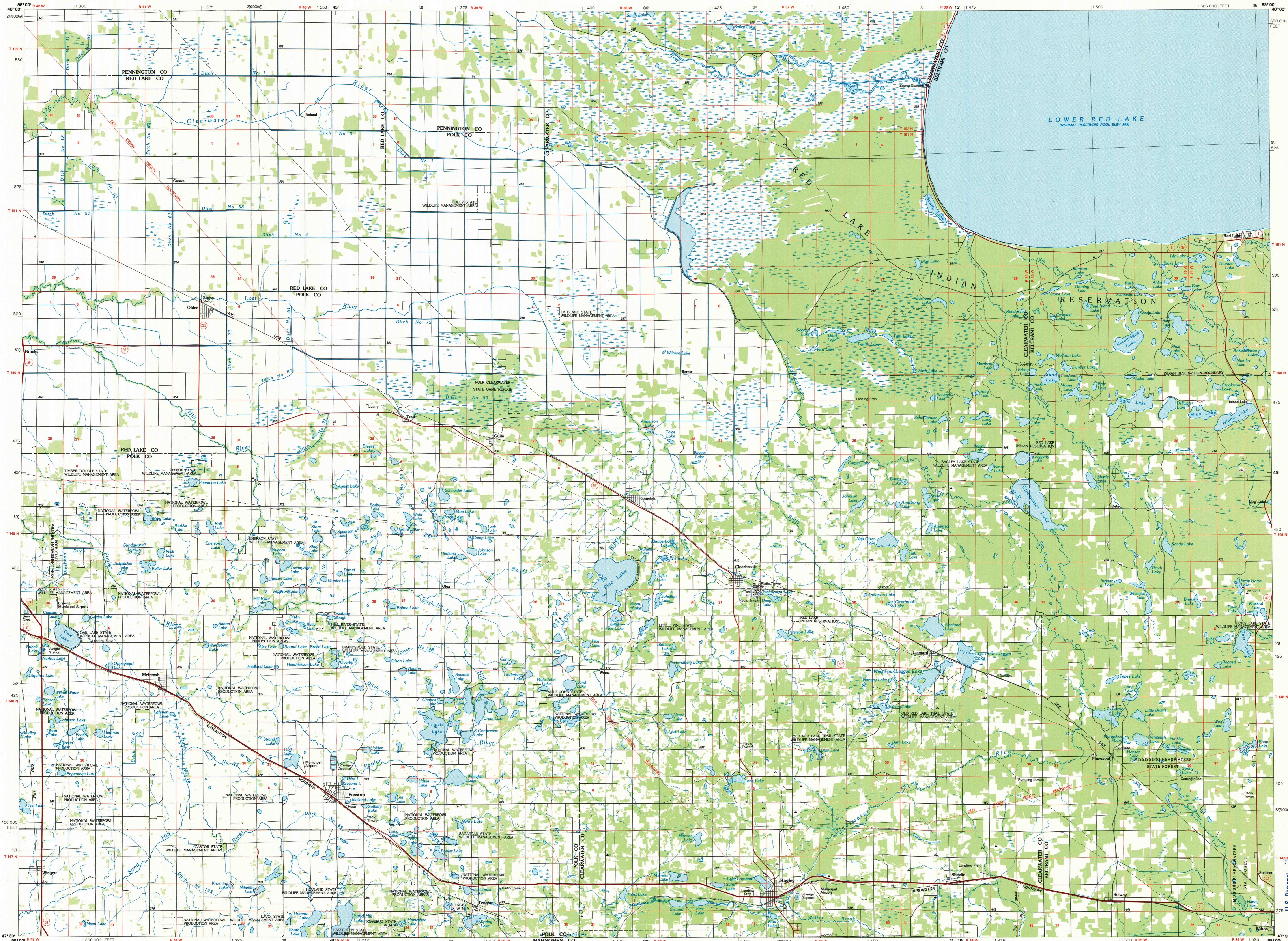


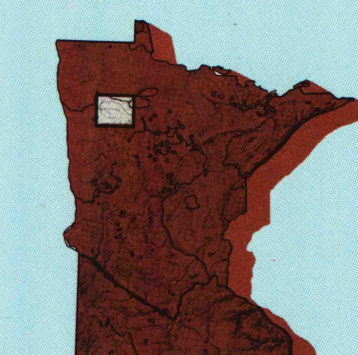
FOSSTON, MINNESOTA

30 X 60 MINUTE SERIES (PLANIMETRIC)



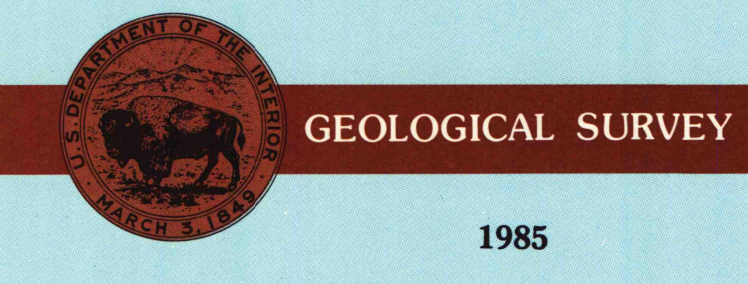
Fosston MINNESOTA

1:100 000-scale planimetric map



30 X 60 MINUTE QUADRANGLE SHOWING

- Elevations in meters
- Highways, roads and other manmade structures
- Water features
- Woodland areas
- Geographic names



Produced by the United States Geological Survey  
 Compiled from USGS 1:24 000-scale topographic maps dated 1969-1982. Planimetry revised from aerial photographs taken 1983 and other source data. Revised information not field checked. Map edited 1985.  
 Projection and 10 000-meter grid, zone 15, Universal Transverse Mercator  
 To place on the predicted North American Datum 1983, move the projection lines 6 meters north and 21 meters east  
 There may be private inholdings within the boundaries of the National or State reservations shown on this map

NATIONAL GEODETIC VERTICAL DATUM OF 1929  
 ELEVATIONS SHOWN TO THE NEAREST METER

THIS MAP COMPLIES WITH NATIONAL MAP ACCURACY STANDARDS

CONVERSION TABLE		DECLINATION DIAGRAM		ADJOINING MAPS	
Meters	Feet	MAGNETIC		GRID	
1	3.2808	1985		1	2
2	6.5617	1981		2	3
3	9.8425	1977		3	4
4	13.1234	1973		4	5
5	16.4042	1969		5	6
6	19.6850	1965		6	7
7	22.9659	1961		7	8
8	26.2467	1957			
9	29.5275	1953			
10	32.8084	1949			

To convert meters to feet multiply by 3.2808  
 To convert feet to meters multiply by 0.3048

UTM grid convergence (GM) and 1983 magnetic declination (MD) at center of map  
 Diagram is approximate

1 Thief River Falls  
 2 Ogish  
 3 Upper Red Lake  
 4 Crookston  
 5 Blackduck  
 6 Ada  
 7 Lake Blanca  
 8 Cass Lake

FOR SALE BY U.S. GEOLOGICAL SURVEY  
 RESTON, VIRGINIA 22092

Topographic Map Symbols

- Primary highway, hard surface
- Secondary highway, hard surface
- Light duty road, principal street, hard or improved surface
- Other road or street, trail
- Road marker, Interstate U.S. State
- Railroad: standard gauge, narrow gauge
- Bridges: overpass; underpass
- Tunnel: road, railroad
- Built up area, locality, elevation
- Airport: landing field; landing strip
- National boundary
- State boundary
- County boundary
- National or State reservation boundary
- Land grant boundary
- U.S. public lands survey: range, township, section
- Range, township, section line: protracted
- Power transmission line; pipeline
- Dam; dam with lock
- Cemetery; building
- Windmill; water well; spring
- Mine shaft; adit or cave; mine, quarry; gravel pit
- Campground; picnic area; U.S. location monument
- Ruins; cliff dwelling
- Disturbed surface strip mine, lava, sand
- Contours: index, intermediate, supplementary
- Bathymetric contours: index intermediate
- Stream, lake: perennial; intermittent
- Rapids, large and small; falls, large and small
- Area to be submerged; marsh, swamp
- Land subject to controlled inundation; woodland
- Stock, enclosure
- Orchard; vineyard

A pamphlet describing topographic maps is available on request

SCALE 1:100 000  
 1 CENTIMETER ON THE MAP REPRESENTS 1 KILOMETER ON THE GROUND

FOSSTON, MINNESOTA  
 47095-E1-PL-100  
 1985

JUN 9 - 1986  
 ARTHUR H. ROBINSON MAP LIBRARY  
 University of Wisconsin-Madison