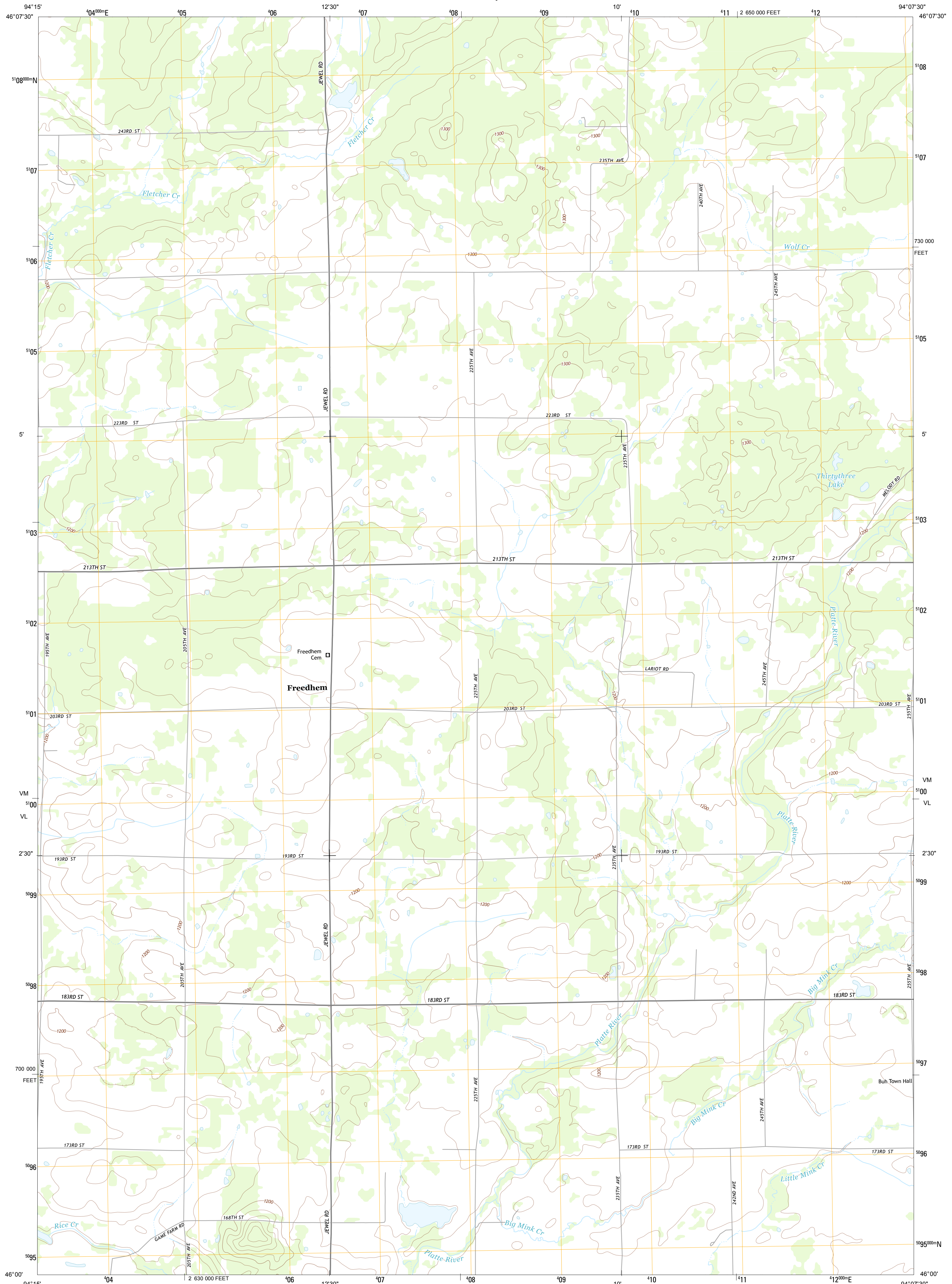




U.S. DEPARTMENT OF THE INTERIOR  
U. S. GEOLOGICAL SURVEY

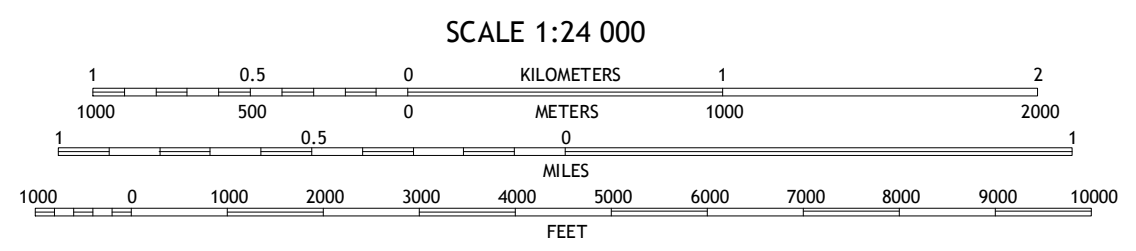
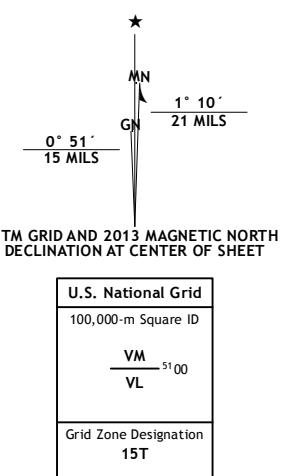


FREEDHEM QUADRANGLE  
MINNESOTA-MORRISON CO.  
7.5-MINUTE SERIES



Produced by the United States Geological Survey  
North American Datum of 1983 (NAD83)  
World Geodetic System of 1984 (WGS84), Projection and  
1 000-meter grid: Universal Transverse Mercator, Zone 15T  
10 000-foot ticks: Minnesota Coordinate System of 1983 (central  
zone)

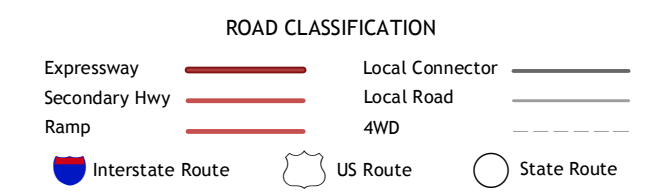
Imagery.....NAIP, September 2010  
Roads.....©2006-2012 TomTom  
Names.....GNS, 2013  
Hydrography.....National Hydrography Dataset, 2010  
Contours.....National Elevation Dataset, 1999  
Boundaries.....Census, IBWC, IBC, USGS, 1972 - 2012



QUADRANGLE LOCATION

Fort Ripley	Lastrop NW	Shepard
Belle Prairie	Freedhem	Lastrop
Little Falls East	Pierz Lake	Pierz

ADJOINING 7.5 QUADRANGLES



FREEDHEM, MN  
2013