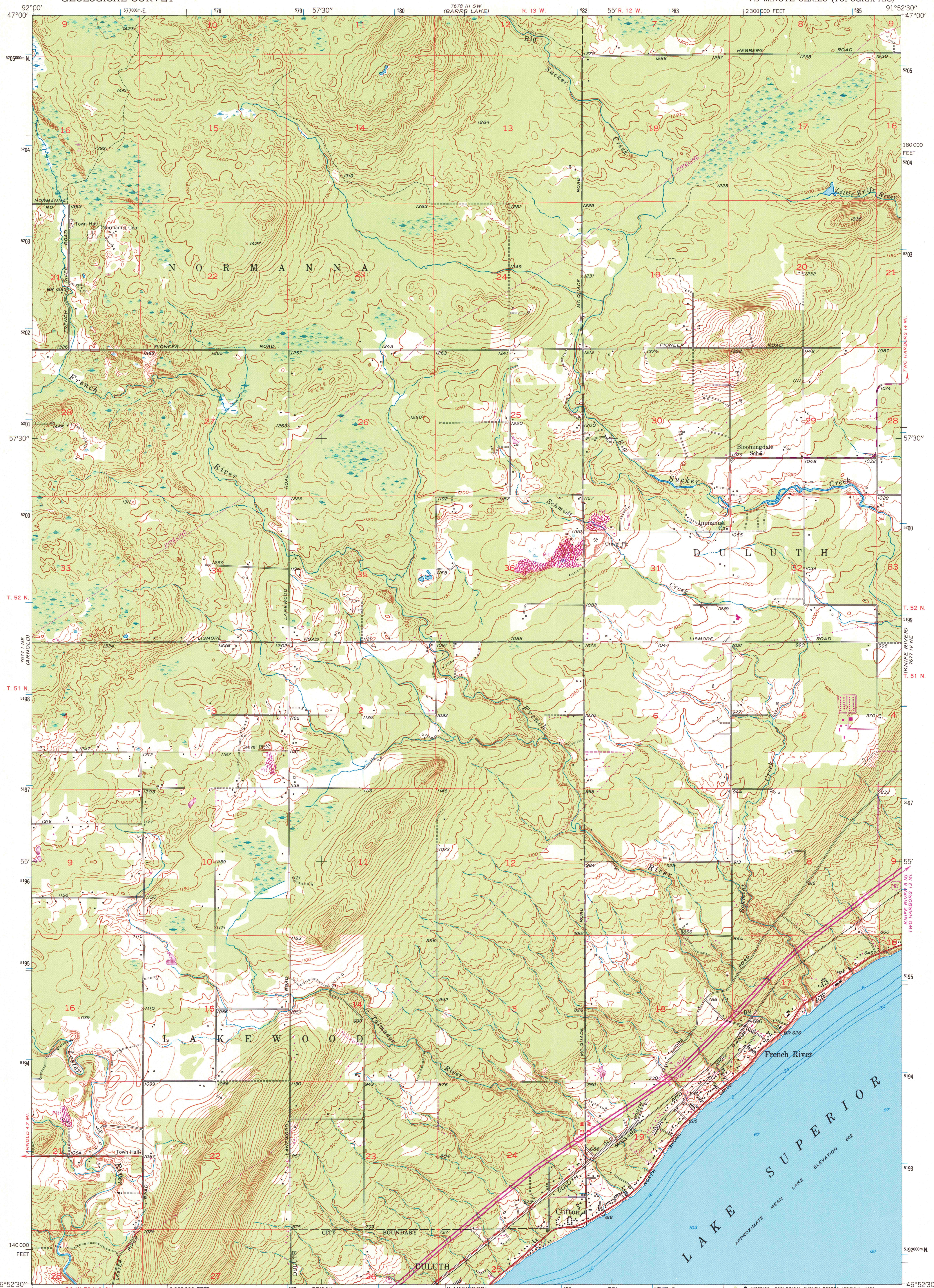


UNITED STATES
DEPARTMENT OF THE INTERIOR
GEOLOGICAL SURVEY

FRENCH RIVER QUADRANGLE
MINNESOTA—ST. LOUIS CO.
7.5 MINUTE SERIES (TOPOGRAPHIC)

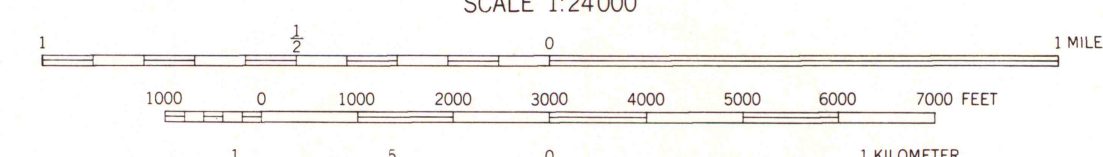
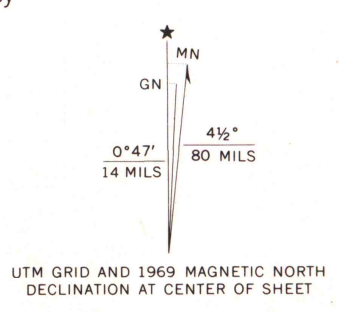


Mapped, edited, and published by the Geological Survey

Control by USGS and USC&GS
Topography from aerial photographs by Kelsch plotter
Aerial photographs taken 1952. Field check 1953
Hydrography from U. S. Lake Survey Chart 96, (1:120,000)

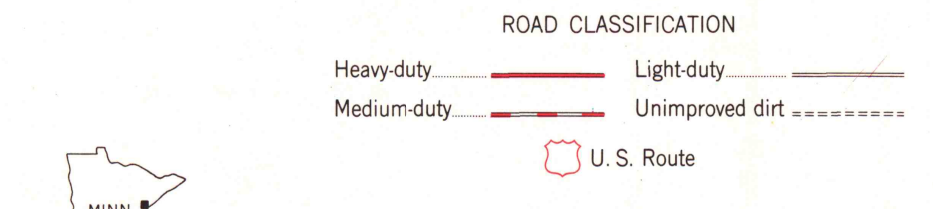
Polyconic projection. 1927 North American datum
10,000-foot grid based on Minnesota coordinate system,
north zone
1000-meter Universal Transverse Mercator grid ticks,
zone 15, shown in blue

Revisions shown in purple compiled in cooperation with the
State of Minnesota from aerial photographs taken 1969
This information not field checked
Map photoinspected 1975
No major culture or drainage changes observed



CONTOUR INTERVAL 10 FEET
NATIONAL GEODETIC VERTICAL DATUM OF 1929
DEPTH CURVES AND SOUNDINGS IN FEET—DATUM IS 601 FEET

THIS MAP COMPLIES WITH NATIONAL MAP ACCURACY STANDARDS
FOR SALE BY U. S. GEOLOGICAL SURVEY, RESTON, VIRGINIA 22092
A FOLDER DESCRIBING TOPOGRAPHIC MAPS AND SYMBOLS IS AVAILABLE ON REQUEST



FRENCH RIVER, MINN.
N4652.5—W9152.5/7.5

PHOTOINSPECTED 1975

A.H. ROBINSON
MAP LIBRARY
APR 22 1983

University of Wisconsin
Madison

To place on the predicted North American Datum 1983
move the projection lines 7 meters north and
1.4 meters east on sheets by double conversion