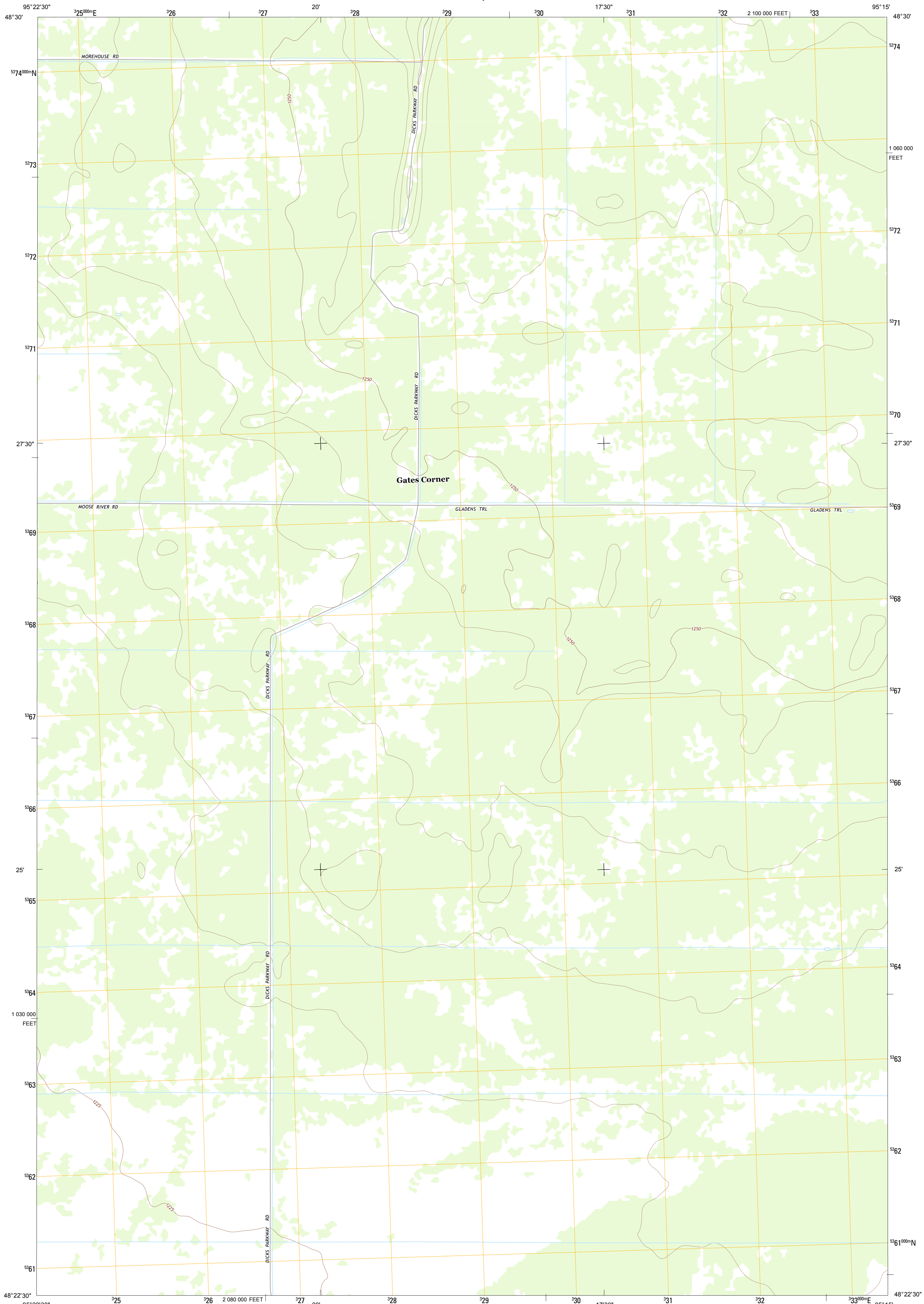




U.S. DEPARTMENT OF THE INTERIOR  
U. S. GEOLOGICAL SURVEY

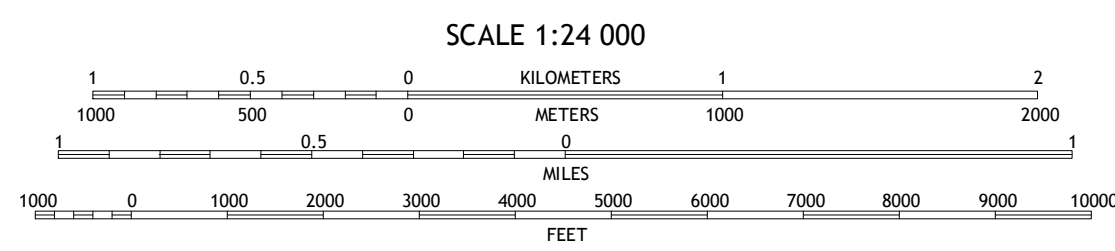
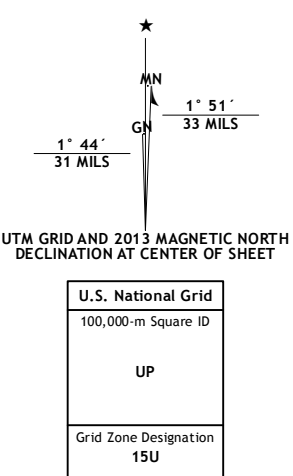


GATES CORNER QUADRANGLE  
MINNESOTA-BELTRAMI CO.  
7.5-MINUTE SERIES



Produced by the United States Geological Survey  
North American Datum of 1983 (NAD83)  
World Geodetic System of 1984 (WGS84). Projection and  
1000-meter grid: Universal Transverse Mercator, Zone 15U  
10 000-foot ticks: Minnesota Coordinate System of 1983 (north zone)

Imagery.....N.A.P., May 2010 - August 2010  
Roads.....©2006-2012 TomTom  
Names.....GNIS, 2013  
Hydrography.....National Hydrography Dataset, 2010  
Contours.....National Elevation Dataset, 2012  
Boundaries.....Census, IBWC, IBC, USGS, 1972 - 2012

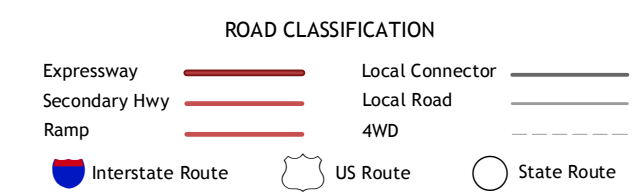


CONTOUR INTERVAL 5 FEET  
NORTH AMERICAN VERTICAL DATUM OF 1988  
This map was produced to conform with the  
National Geospatial Program US Topo Product Standard, 2011.  
A metadata file associated with this product is draft version 0.6.11



QUADRANGLE LOCATION

Mulligan Lake SW	Mulligan Lake	Winter Road Lake SW
Four Town NW	Gates Corner	Shilling Dam NW
Carmel	Four Town	Head of Rapid River



GATES CORNER, MN  
2013

ADJOINING 7.5 QUADRANGLES