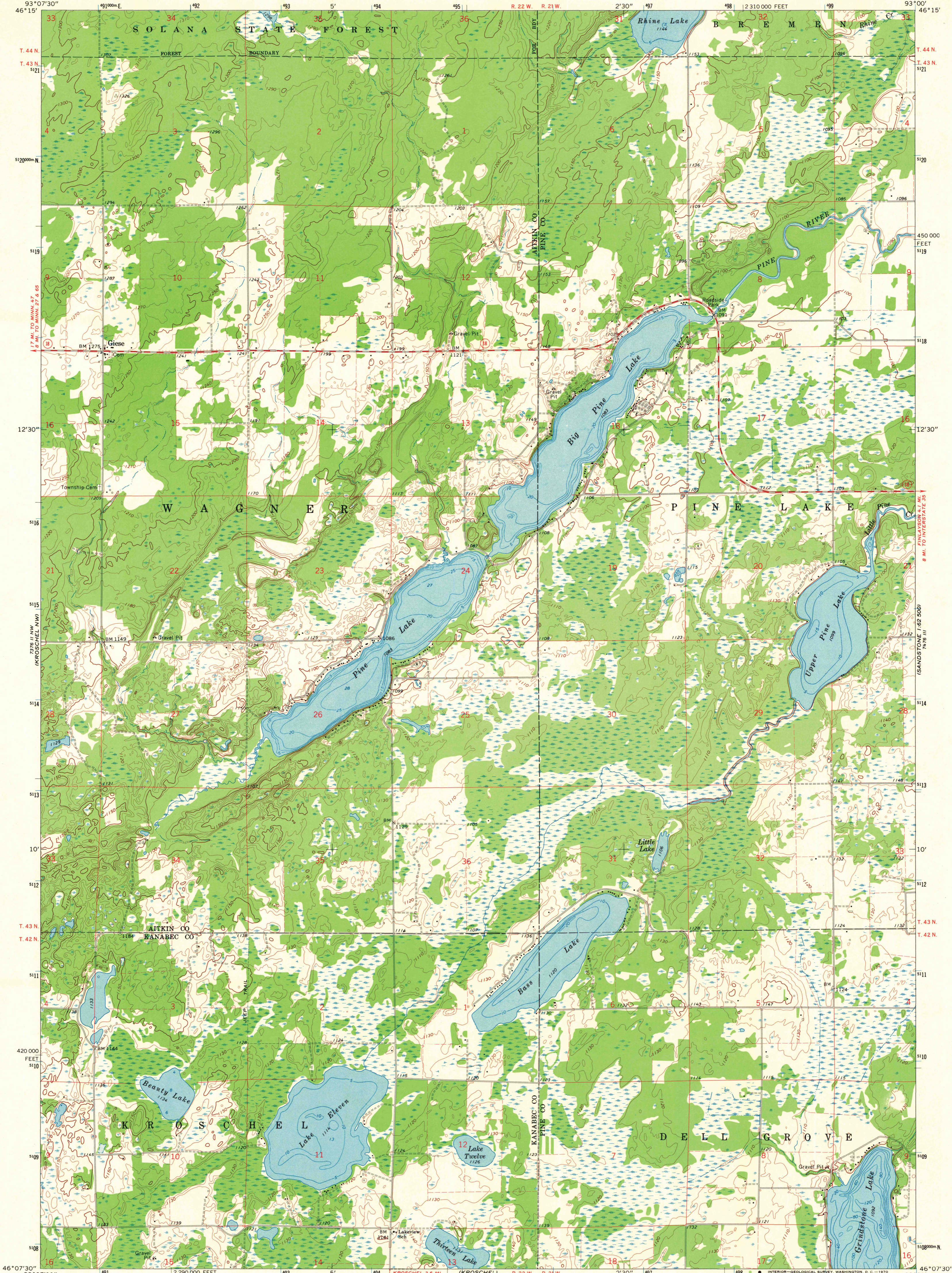
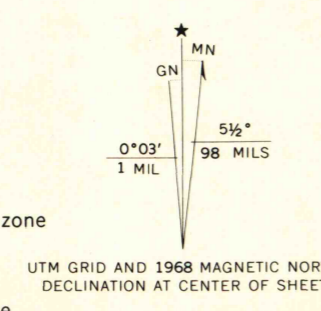


MOOSE LAKE 1:62,500



Mapped, edited, and published by the Geological Survey
Control by USGS and USC&GS
Topography by photogrammetric methods from aerial
photographs taken 1966. Field checked 1968
Depth curves and soundings compiled from charts furnished
by Minnesota Department of Conservation
Polyconic projection. 1927 North American datum
10,000-foot grid based on Minnesota coordinate system, central zone
1000-meter Universal Transverse Mercator grid ticks,
zone 15, shown in blue
UTM GRID AND 1968 MAGNETIC NORTH
DECLINATION AT CENTER OF SHEET
Fine red dashed lines indicate selected fence and field lines where
generally visible on aerial photographs. This information is unchecked



SCALE 1:24,000
1000 0 1000 2000 3000 4000 5000 6000 7000 FEET
1 0 1 KILOMETER
CONTOUR INTERVAL 10 FEET
DATUM IS MEAN SEA LEVEL
THIS MAP COMPLIES WITH NATIONAL MAP ACCURACY STANDARDS
FOR SALE BY U.S. GEOLOGICAL SURVEY, DENVER, COLORADO 80225, OR WASHINGTON, D. C. 20242
A FOLDER DESCRIBING TOPOGRAPHIC MAPS AND SYMBOLS IS AVAILABLE ON REQUEST

ROAD CLASSIFICATION
Secondary highway, all weather. Light-duty road, all weather,
hard surface. Improved surface.
Unimproved road, fair or dry
weather.
State Route



MINN. QUADRANGLE LOCATION
GIESE, MINN.
N4607.5-W9300.7.5
1968

AMS 7376 II NE-SERIES W972