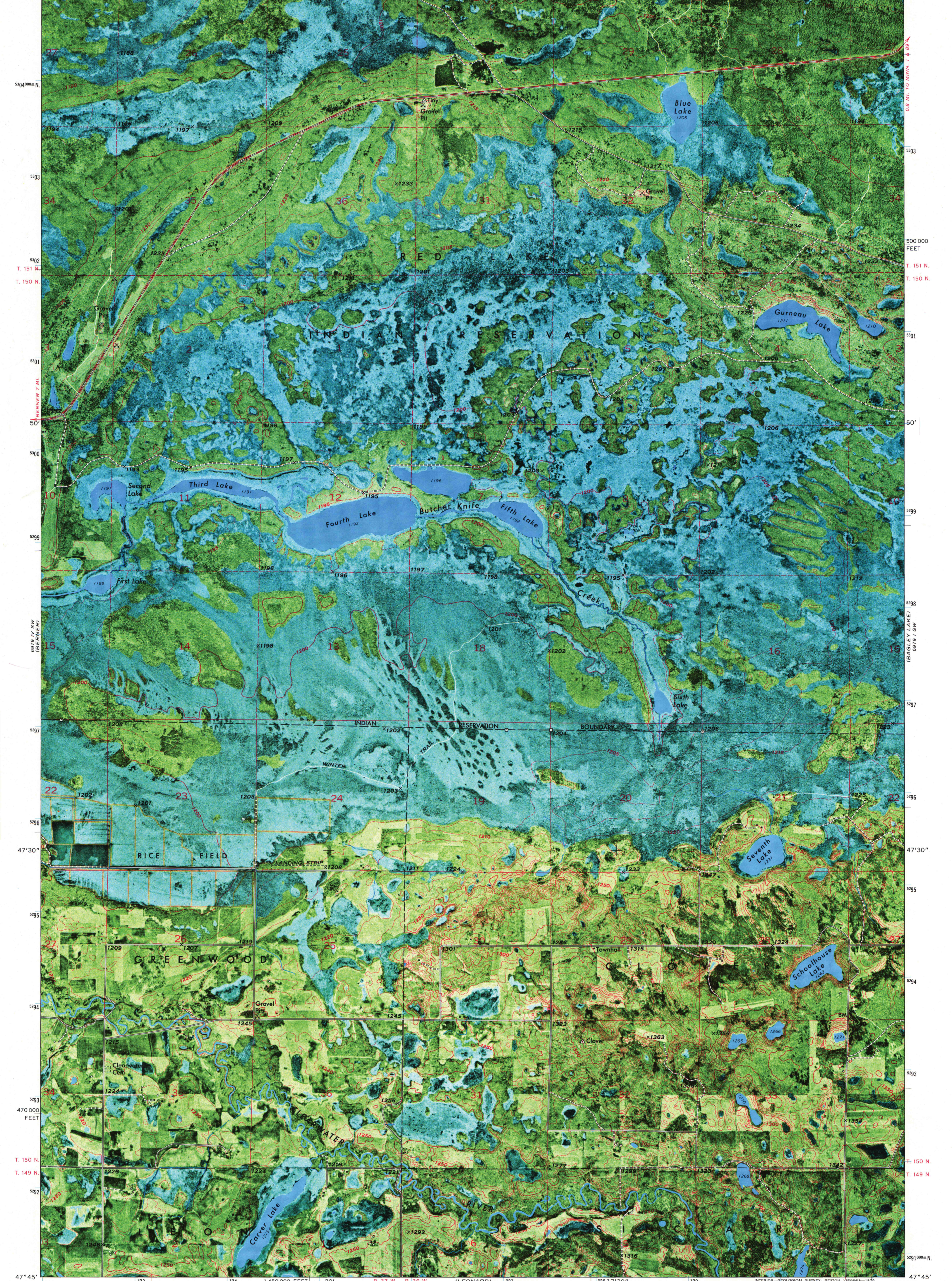
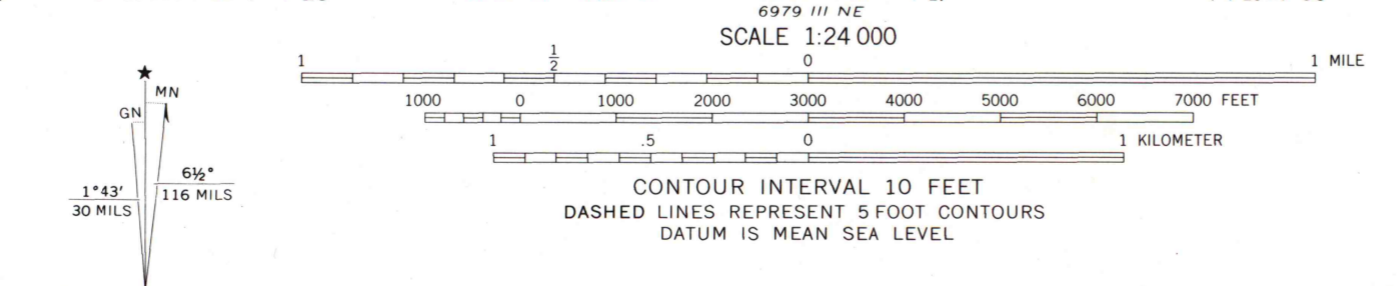


95°22'30" 95°22'30" 9230000 E 924 925 20' 926 R. 37 W. R. 36 W. (BERNER NE) 6979 IV NE (BERNER NE) 17'30" 929 930 931 1470000 FEET 95°15' 47°52'30" 47°52'30"



Mapped, edited, and published by the Geological Survey
Control by USGS and USC&GS
Orthophotomap prepared from high-altitude aerial photograph
taken April 29, 1969. Topography by photogrammetric methods
from aerial photographs taken 1972. Field checked 1972
Projection and 10,000-foot grid ticks: Minnesota coordinate
system, north zone (Lambert conformal conic)
1000-meter Universal Transverse Mercator grid ticks,
zone 15, shown in blue. 1927 North American datum



THIS MAP COMPLIES WITH NATIONAL MAP ACCURACY STANDARDS
FOR SALE BY U. S. GEOLOGICAL SURVEY, RESTON, VIRGINIA 22092
A FOLDER DESCRIBING TOPOGRAPHIC MAPS AND SYMBOLS IS AVAILABLE ON REQUEST