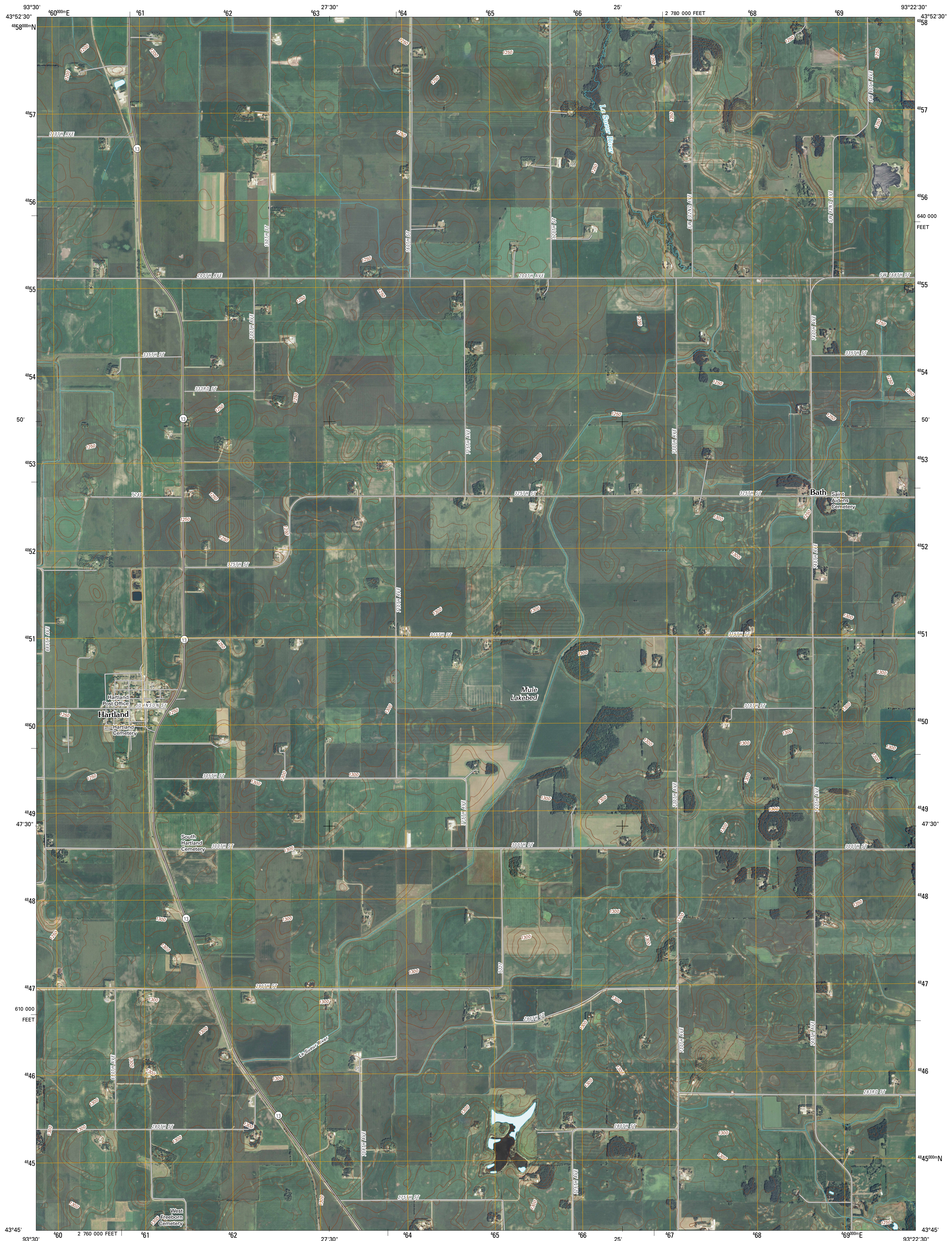




U.S. DEPARTMENT OF THE INTERIOR
U. S. GEOLOGICAL SURVEY

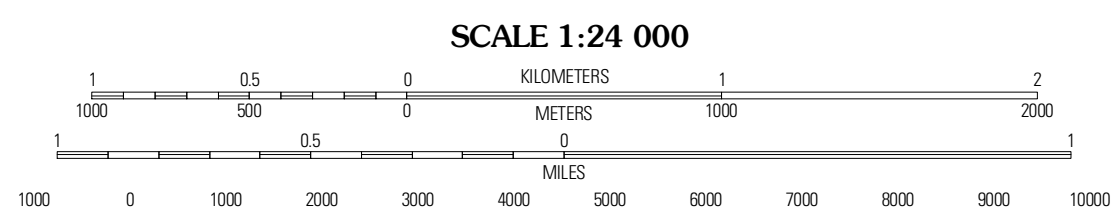
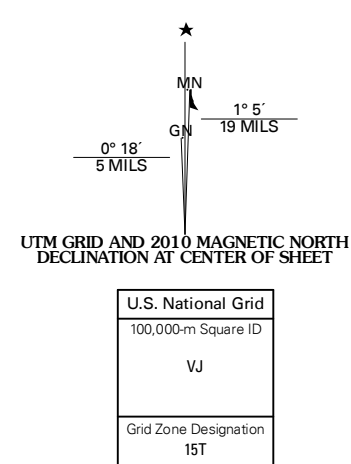


HARTLAND QUADRANGLE
MINNESOTA
7.5-MINUTE SERIES



Produced by the United States Geological Survey
North American Datum of 1983 (NAD83)
World Geodetic System of 1984 (WGS84). Projection and
1 000-meter grid; Universal Transverse Mercator, Zone 15T
10 000-foot ticks; Minnesota Coordinate System of 1983
(south zone)

Imagery.....NAIP, June 2009 - July 2009
Roads.....02/006-2010 File: Atlas
Names.....GNIS, 2008
Hydrography.....National Hydrography Dataset, 2009
Contours.....National Elevation Dataset, 1999



CONTOUR INTERVAL 10 FEET
NORTH AMERICAN VERTICAL DATUM OF 1988

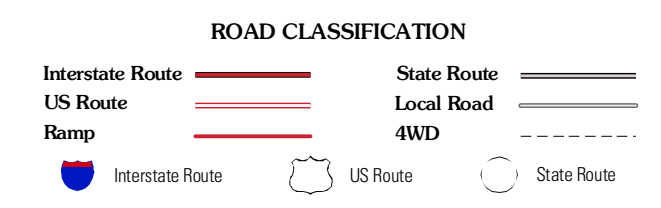
This map was produced to conform with version 0.5.10 of the
draft USGS Standards for 7.5-Minute Quadrangle Maps.
A metadata file associated with this product is draft version 0.5.11



QUADRANGLE LOCATION

Otisco	New Richland	Hope
Freeborn	Hartland	Elkdale
Alken	Albert Lee West	Albert Lee East

ADJOINING 7.5' QUADRANGLES



HARTLAND, MN
2010