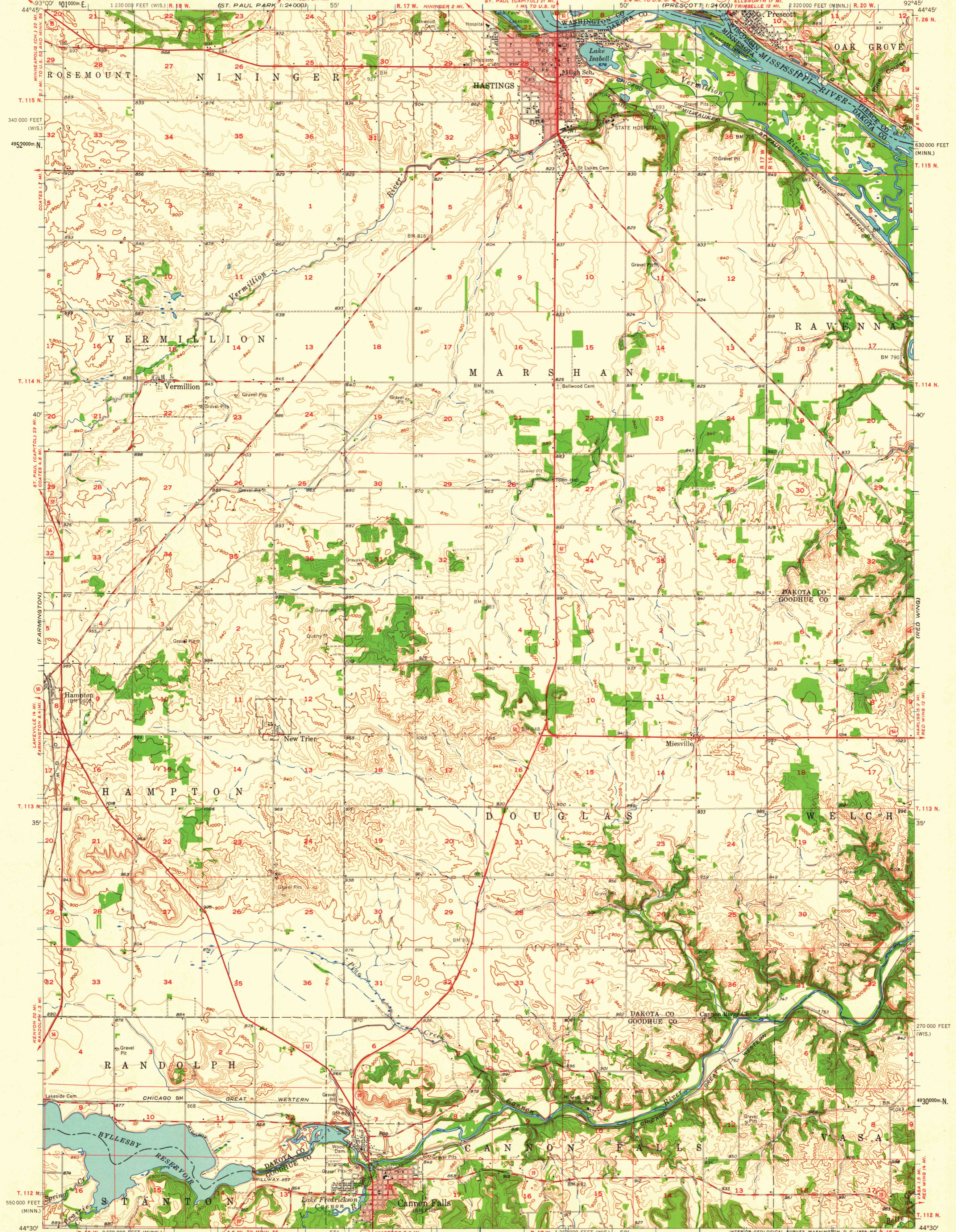


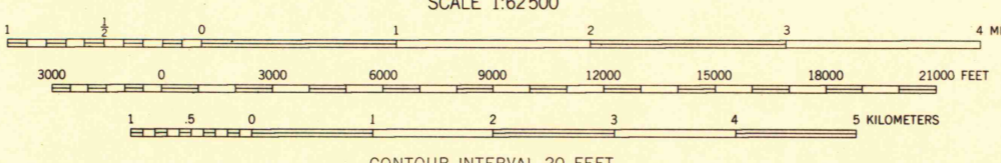
UNITED STATES
DEPARTMENT OF THE INTERIOR
GEOLOGICAL SURVEY

HASTINGS QUADRANGLE
MINNESOTA-WISCONSIN
15 MINUTE SERIES (TOPOGRAPHIC)



Mapped, edited, and published by the Geological Survey
Control by USGS, USC&GS, and USCE

Topography in Minnesota from aerial photographs by Kesh plotter and by planetable surveys 1957. Aerial photographs taken 1953
Topography in Wisconsin from aerial photographs by multiplex methods
Aerial photographs taken 1944. Field check 1946. Revised 1957
Polyconic projection. 1927 North American datum
10,000-foot grids based on Minnesota coordinate system, south zone and Wisconsin coordinate system, central zone
1000-meter Universal Transverse Mercator grid ticks, zone 15, shown in blue
Red tint indicates areas in which only landmark buildings are shown



ROAD CLASSIFICATION
Heavy-duty ——— Light-duty ———
Medium-duty ——— Unimproved dirt - - - - -
U.S. Route □ State Route ○



HASTINGS, MINN.—WIS.
N 4430—W 9245/15

THIS MAP COMPLIES WITH NATIONAL MAP ACCURACY STANDARDS
FOR SALE BY U. S. GEOLOGICAL SURVEY, WASHINGTON 25, D. C.
AND BY THE WISCONSIN GEOLOGICAL AND NATURAL HISTORY SURVEY, MADISON 6, WISCONSIN
A FOLDER DESCRIBING TOPOGRAPHIC MAPS AND SYMBOLS IS AVAILABLE ON REQUEST

MAP AND AIR PHOTO LIBRARY
University of Wisconsin

1957

FOR LIBRARY USE ONLY

1957
Copy
1-1