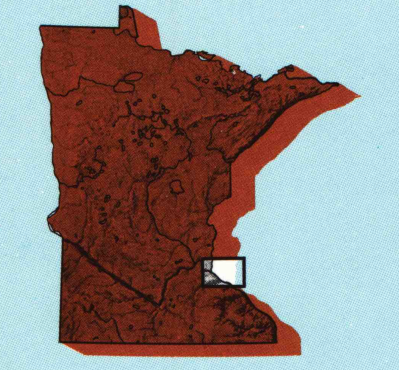


HASTINGS, MINNESOTA-WISCONSIN

30 X 60 MINUTE SERIES (TOPOGRAPHIC)

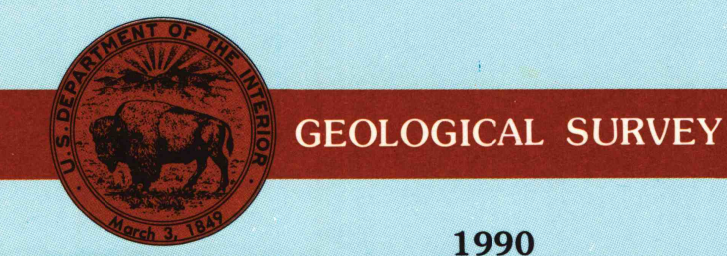
Hastings MINNESOTA-WISCONSIN

1:100 000-scale metric topographic map



30 X 60 MINUTE QUADRANGLE SHOWING

- Contours and elevations in meters
- Highways, roads and other manmade structures
- Water features
- Woodland areas
- Geographic names



Produced by the United States Geological Survey  
 Compiled from USGS 1:24 000-scale topographic maps dated 1967-1989. Planimetry revised from aerial photographs taken 1980 and 1986, and other source data. Revised information not field checked. Map edited 1990.  
 Projection and 10 000-meter grid, zone 15, Universal Transverse Mercator.  
 25 000-foot grid ticks based on Wisconsin coordinate system, central zone and Minnesota coordinate system, south zone 1927 North American Datum.  
 To place on the predicted North American datum 1983, move the projection lines 7 meters north and 15 meters east.  
 There may be private inholdings within the boundaries of the National or State reservations shown on this map.

CONTOUR INTERVAL 10 METERS  
 NATIONAL GEODETIC VERTICAL DATUM OF 1929  
 ELEVATIONS SHOWN TO THE NEAREST METER

THIS MAP COMPLIES WITH NATIONAL MAP ACCURACY STANDARDS

CONVERSION TABLE		DECLINATION DIAGRAM		ADJOINING MAPS		
Meters	Feet	GA	25Y	1	2	3
1	3.2808			4	5	
2	6.5617			6	7	8
3	9.8425					
4	13.1234					
5	16.4042					
6	19.6850					
7	22.9659					
8	26.2467					
9	29.5275					
10	32.8084					

To convert meters to feet multiply by 3.2808  
 To convert feet to meters multiply by 0.3048

UTM grid convergence (EN) and 100 magnetic declination (M) at center of map. Diagram is approximate.

1 Anoka  
 2 Stillwater  
 3 Bloomer  
 4 St Paul  
 5 Eau Claire  
 6 Faribault  
 7 Rochester  
 8 Winona

FOR SALE BY U.S. GEOLOGICAL SURVEY  
 DENVER, COLORADO 80225, OR RESTON, VIRGINIA 22092  
 ARTHUR H. ROBINSON MAP LIBRARY  
 University of Wisconsin-Madison

JUL 28 1993

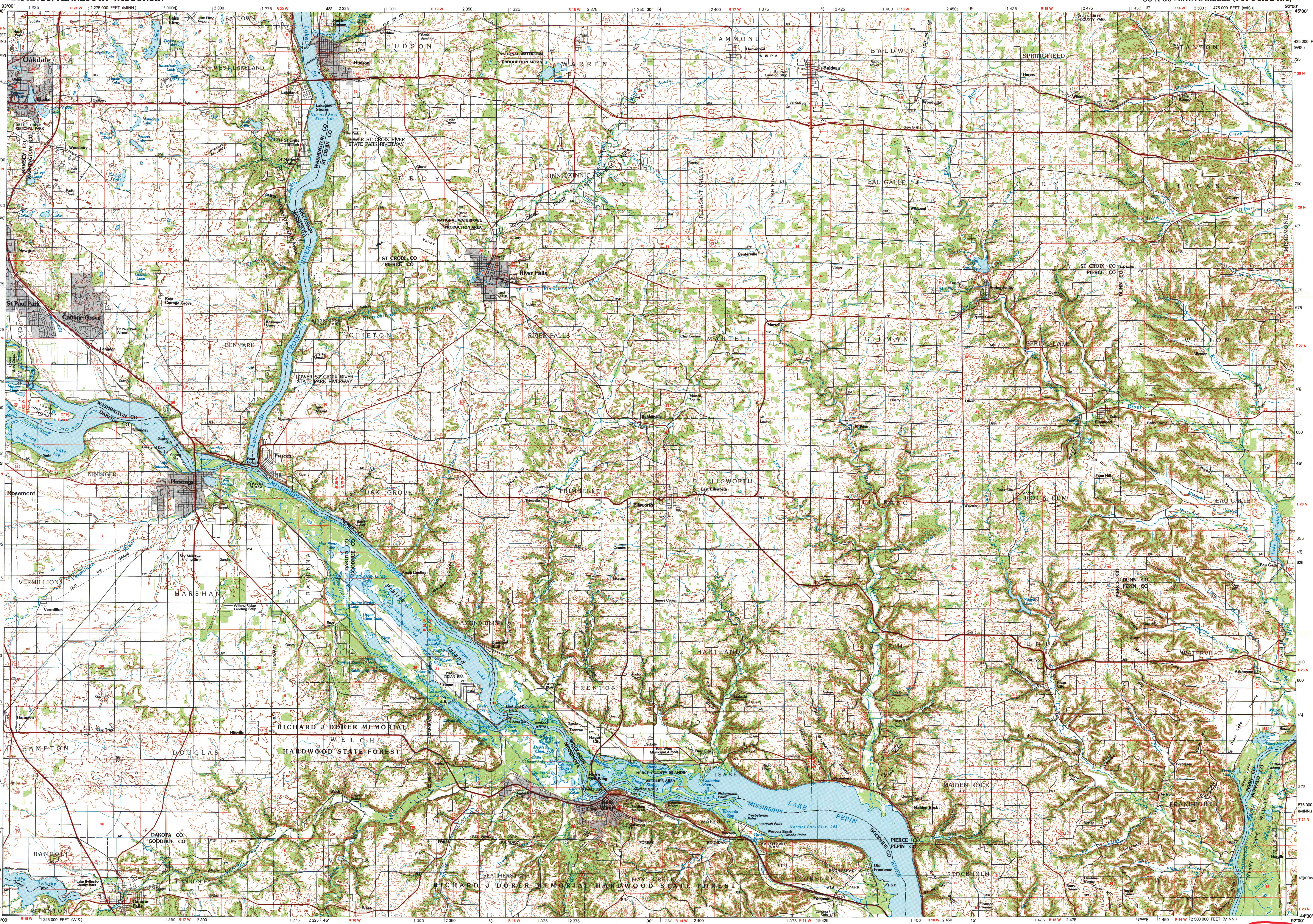
Topographic Map Symbols

- Primary highway, hard surface
- Secondary highway, hard surface
- Light duty road, principal street, hard or improved surface
- Other road or street; trail
- Route marker: interstate; U.S.; State
- Railroad: standard gage; narrow gage
- Bridge: overpass; underpass
- Tunnel: road; railroad
- Built up area: locality; elevation
- Airport: landing field; landing strip
- National boundary
- State boundary
- County boundary
- National or State reservation boundary
- Land grant boundary
- U.S. public lands survey: range, township, section
- Range, township, section line: protracted
- Power transmission line: pipeline
- Dam: dam with lock
- Cemetery, building
- Wells: water well; spring
- Mine shaft; adit or cave; mine, quarry; gravel pit
- Cemetary; picnic area; U.S. location monument
- Ruins: cliff dwelling
- Distorted surface: strip mine, lava, sand
- Contours: index; intermediate; supplementary
- Bathymetric contours: index; intermediate
- Stream: lake; reservoir; intermittent
- Rapids, large and small; falls, large and small
- Area to be submerged; marsh, swamp
- Land subject to controlled inundation; woodland
- Scrub; mangrove
- Orchard; vineyard

A pamphlet describing topographic maps is available on request

Booc-9/8

Copy 5 x SET 2-242



SCALE 1:100 000  
 1 CENTIMETER ON THE MAP REPRESENTS 1 KILOMETER ON THE GROUND  
 CONTOUR INTERVAL 10 METERS

KILOMETERS 1 0 1 2 3 4 5 6 7 8 9 10 11 12 13 14 15 16 17 18 19 20

MILES 1 0 1 2 3 4 5 6 7 8 9 10 11 12 13

5000 0 5000 10000 15000 20000 METERS

5000 0 5000 10000 15000 20000 30000 40000 50000 60000 70000 FEET

HASTINGS, MINNESOTA-WISCONSIN  
 44092-EI-TM-100  
 1990