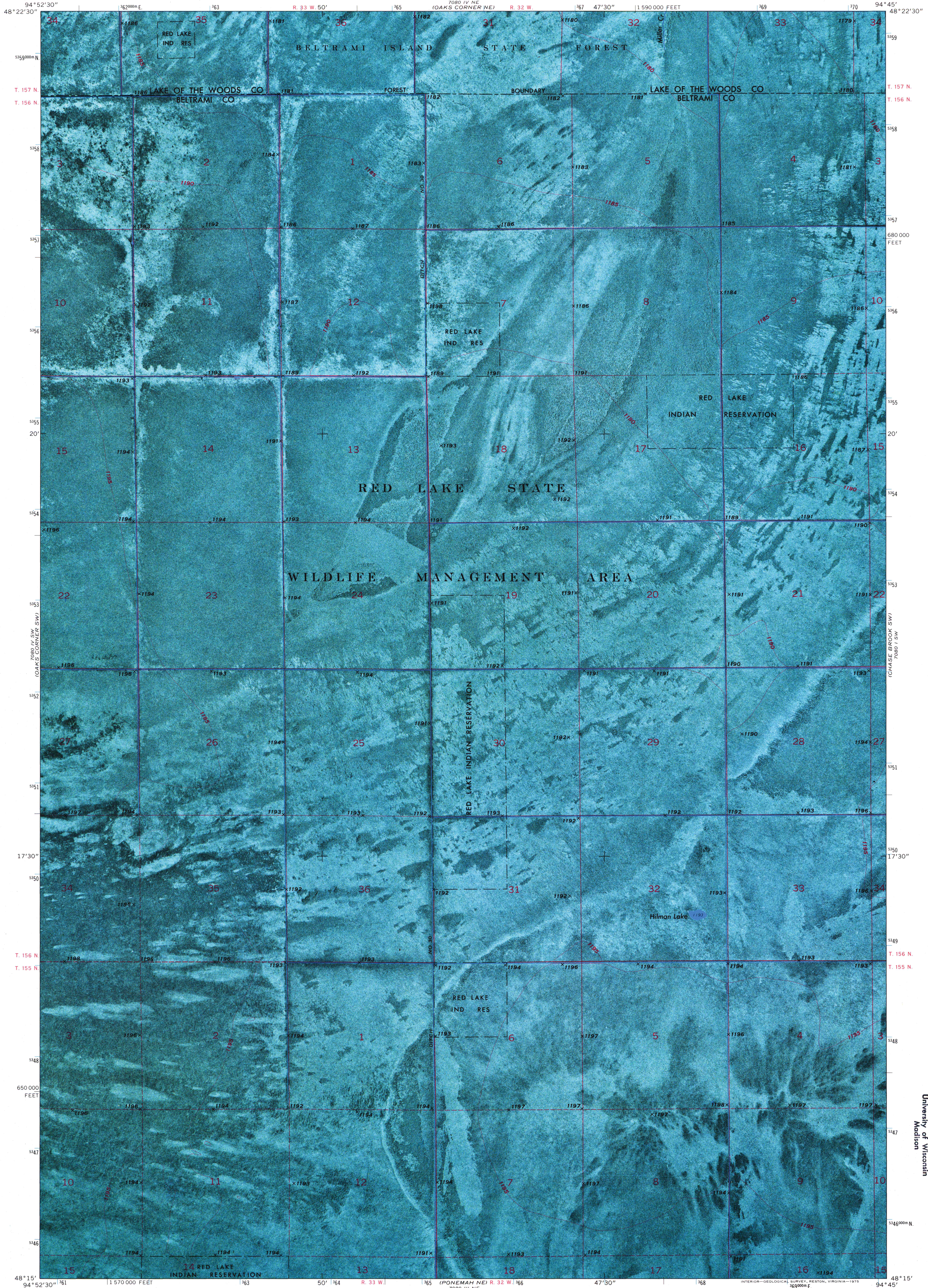
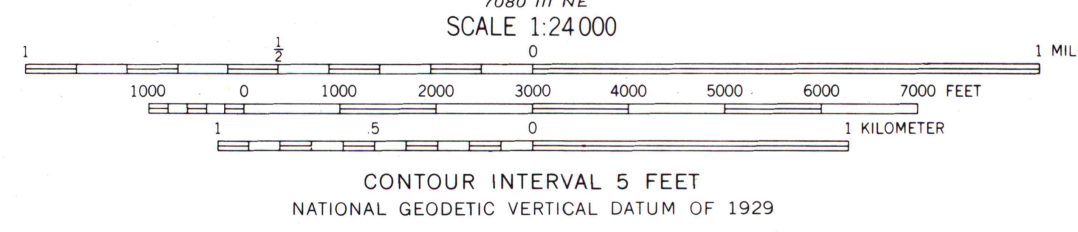
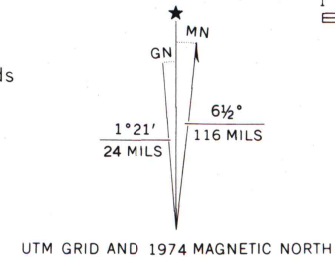


7080 IV NW
7080 III NW
(OAKS CORNER)

7080 NW
7080 I SW
(CHASE BROOK)



Mapped, edited, and published by the Geological Survey
Control by USGS and USC&GS
Orthophotomap prepared from high-altitude aerial photograph
taken May 22, 1969. Topography by photogrammetric methods
from aerial photographs taken 1973. Field checked 1974
Projection and 10,000-foot grid ticks: Minnesota coordinate
system, north zone (Lambert conformal conic)
1000-meter Universal Transverse Mercator grid ticks,
zone 15, shown in blue. 1927 North American datum



ROAD CLASSIFICATION
No roads or trails in this area

HILMAN LAKE, MINN.
N4815-W9445/7.5

THIS MAP COMPLIES WITH NATIONAL MAP ACCURACY STANDARDS
FOR SALE BY U.S. GEOLOGICAL SURVEY, RESTON, VIRGINIA 22092
A FOLDER DESCRIBING TOPOGRAPHIC MAPS AND SYMBOLS IS AVAILABLE ON REQUEST

1974

MAP AND AIR PHOTO
LIBRARY
AUG 3 1976
University of Wisconsin
Madison