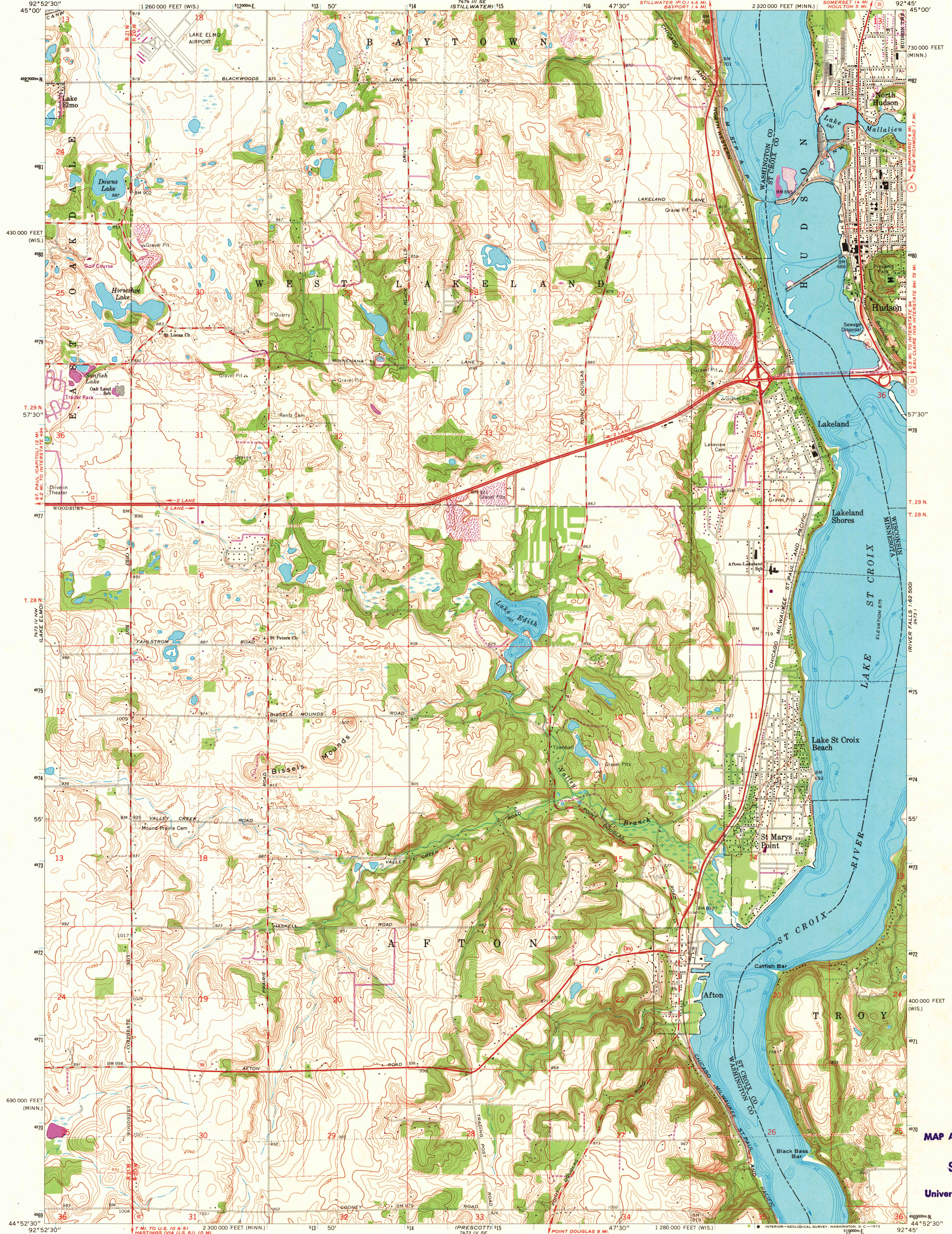
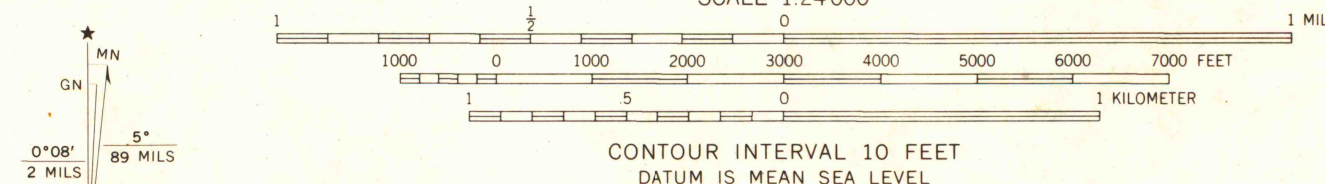


WHITE BLUFF LAKE
(NEW 1:62,500)

NEW RICHMOND
(NEW 1:62,500)



Mapped, edited, and published by the Geological Survey in cooperation with Minnesota Department of Administration Control by USGS, USC&GS, and USCE
Topography by photogrammetric methods from aerial photographs taken 1947. Field checked 1949. Revised from aerial photographs taken 1966. Field checked 1967
Hydrography compiled from information furnished by Minnesota Department of Conservation
Polyconic projection. 1927 North American datum 10,000-foot grids based on Minnesota coordinate system, south zone, and Wisconsin coordinate system, central zone 1000-meter Universal Transverse Mercator grid ticks, zone 15, shown in blue
Fine red dashed lines indicate selected fence and field lines where generally visible on aerial photographs. This information is unchecked



THIS MAP COMPLIES WITH NATIONAL MAP ACCURACY STANDARDS
FOR SALE BY U. S. GEOLOGICAL SURVEY, DENVER, COLORADO 80225, OR WASHINGTON, D. C. 20242
AND BY THE WISCONSIN GEOLOGICAL AND NATURAL HISTORY SURVEY, MADISON, WISCONSIN 53706
A FOLDER DESCRIBING TOPOGRAPHIC MAPS AND SYMBOLS IS AVAILABLE ON REQUEST

ROAD CLASSIFICATION
Heavy-duty — Light-duty
Medium-duty — Unimproved dirt
U.S. Route — State Route



HUDSON, MINN. - WIS.
N4452.5-W9245/7.5
1967
PHOTOREVISED 1972
AMS 7473 IV NE-SERIES V872

MAP AND AIR PHOTO
LIBRARY
SEP 12 1974
University of Wisconsin

1972
Copy
1-1