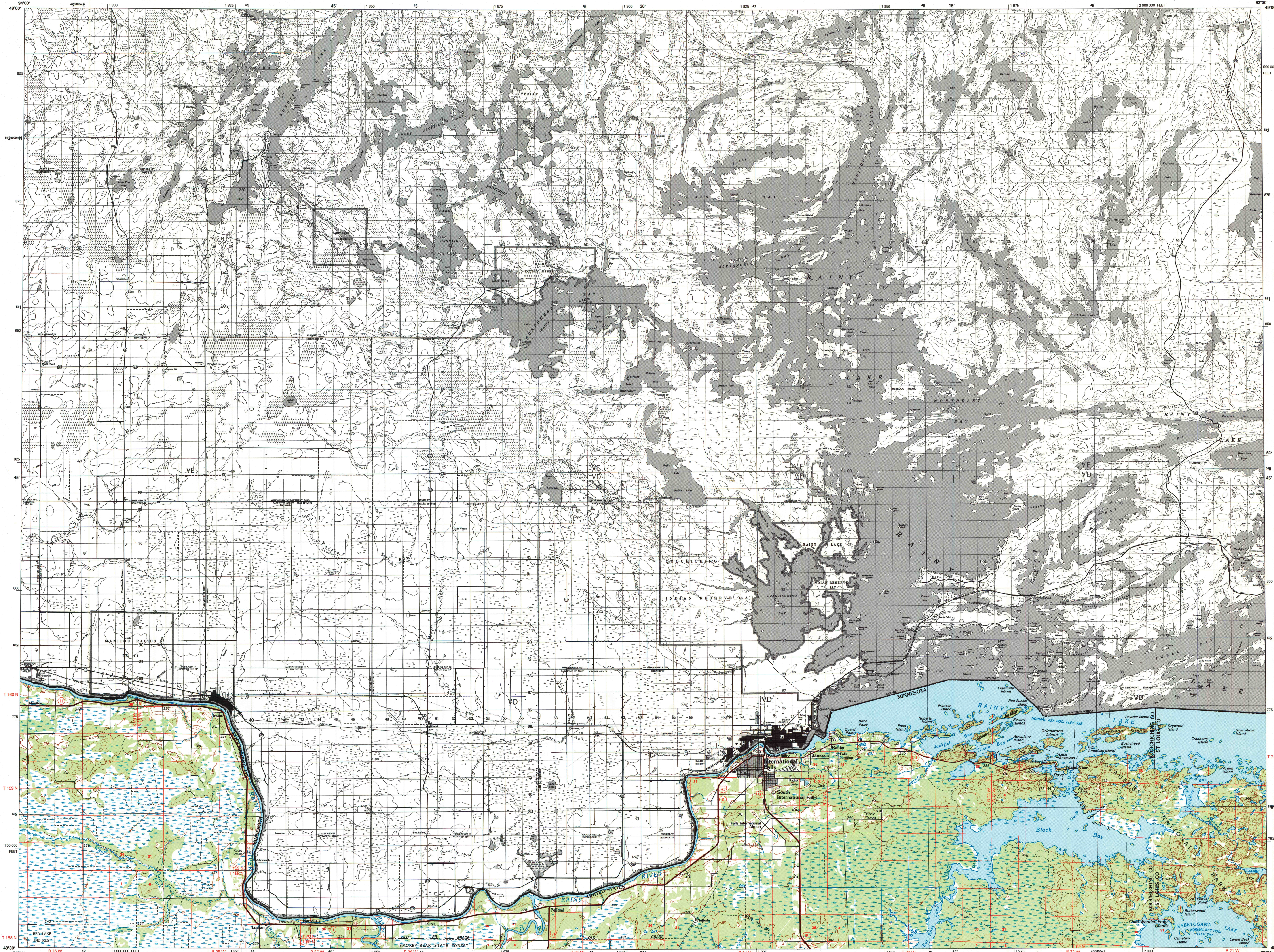


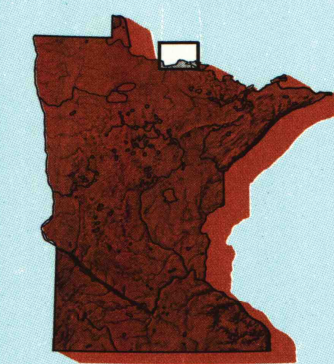
INTERNATIONAL FALLS, MINNESOTA-ONTARIO

30 X 60 MINUTE SERIES (TOPOGRAPHIC)



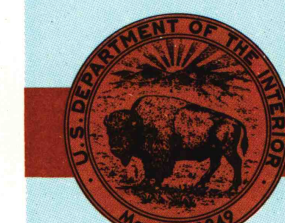
International Falls
MINNESOTA-ONTARIO

1:100 000-scale metric
topographic map



30 X 60 MINUTE QUADRANGLE
SHOWING

- Contours and elevations
- Highways, roads and other manmade structures
- Water features
- Woodland areas
- Geographic names



U. S. GEOLOGICAL SURVEY

1978
PHOTOINSPECTED 1987

Produced by the United States Geological Survey
 Compiled from USGS 1:24 000-scale topographic maps dated 1969-70. Map edited 1978.
 Canadian portion copied from Department of Energy, Mines and Resources, 1:50,000-scale topographic maps dated 1979.
 Canadian portion of this map © by Her Majesty the Queen in Right of Canada, and may not be reproduced or redistributed without express consent of Energy, Mines and Resources Canada, 4th Floor, 615 Booth Street, Ottawa, Ontario, K1A 0E9.
 1927 North American Datum (NAD 27). Projection and 10 000-meter grid: Universal Transverse Mercator, zone 15 25 000-foot ticks: Minnesota coordinate system, north zone.
 The difference between NAD 27 and North American Datum of 1983 (NAD 83) is too small to show at this scale. The values of the shift between the datums for 7.5-minute intersections are given in USGS Bulletin 1875.
 There may be private inholdings within the boundaries of the National or State reservations shown on this map.
 The U.S. portion of this map photostereographed using 1987 photographs.
 No major culture or drainage changes found.

CONTOUR INTERVAL 5 METERS IN UNITED STATES
 CONTOUR INTERVAL 50 FEET IN CANADA
 NATIONAL GEODETIC VERTICAL DATUM OF 1929
 ELEVATIONS SHOWN TO THE NEAREST METER IN UNITED STATES
 ELEVATIONS SHOWN TO THE NEAREST FOOT IN CANADA
 THE U.S. PORTION OF THIS MAP COMPLES WITH NATIONAL MAP ACCURACY STANDARDS

CONVERSION TABLE		DECLINATION DIAGRAM		ADJOINING MAPS		
Meters	Feet	Magnetic Declination		1	2	3
1	3.2808	Magnetic declination at center of map		4	5	
2	6.5617	Magnetic declination at center of map		6	7	8
3	9.8425	Magnetic declination at center of map				
4	13.1234	Magnetic declination at center of map				
5	16.4042	Magnetic declination at center of map				
6	19.6850	Magnetic declination at center of map				
7	22.9659	Magnetic declination at center of map				
8	26.2467	Magnetic declination at center of map				
9	29.5275	Magnetic declination at center of map				
10	32.8084	Magnetic declination at center of map				

To convert meters to feet multiply by 3.2808
 To convert feet to meters multiply by 0.3048

UTM grid convergence (GN and 100 magnetic declination (MM) at center of map
 Diagram is approximate

1 Oak Island
 2
 3
 4 Baudette
 5 Brule Narrows
 6 Upper Red Lake
 7 Littlefork
 8 Crane Lake

FOR SALE BY U. S. GEOLOGICAL SURVEY
DENVER, COLORADO 80225, OR RESTON, VIRGINIA 22092

A.H. ROBINSON
MAP LIBRARY
FEB 10 1995
University of Wisconsin
Madison

U.S. Regional
Depository Copy
DO NOT DISCARD

Topographic Map Symbols

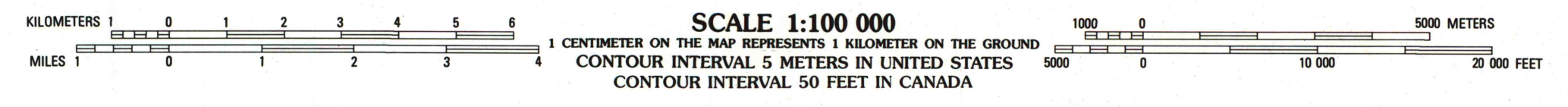
- Primary highway, hard surface
- Secondary highway, hard surface
- Light duty road, principal street, hard or improved surface
- Other road or street, trail
- Route marker: Interstate, U.S., State
- Railroad: standard gage, narrow gage
- Bridge; overpass; underpass
- Tunnel: road, railroad
- Built-up landing field, elevation
- Airport: landing field, landing strip
- National boundary
- State boundary
- County boundary
- Civil township boundary
- National or State reservation boundary
- Land grant boundary
- U.S. public lands survey: range, township, section
- Range, township, section line: protracted
- Power transmission line; pipeline
- Dam; dam with lock
- Cemetery; building
- Well: water well, spring
- Mine shaft; adit or cave; mine; quarry; gravel pit
- Campground; picnic area; U.S. location monument
- Ruins; cliff dwelling
- Distorted surface: strip mine, lava, sand
- Contours: index; intermediate; supplementary
- Bathymetric contours: index; intermediate
- Stream: lake; perennal; intermittent
- Rapids, large and small; falls, large and small
- Area to be submerged: marsh, swamp
- Land subject to controlled inundation; woodland
- Scrub; mangrove
- Orchard; vineyard

INTERNATIONAL FALLS, MINNESOTA-ONTARIO

48093-E1-TM-100

1978

PHOTOINSPECTED 1987



Box-7/8.02 SET

A pamphlet describing topographic maps is available on request