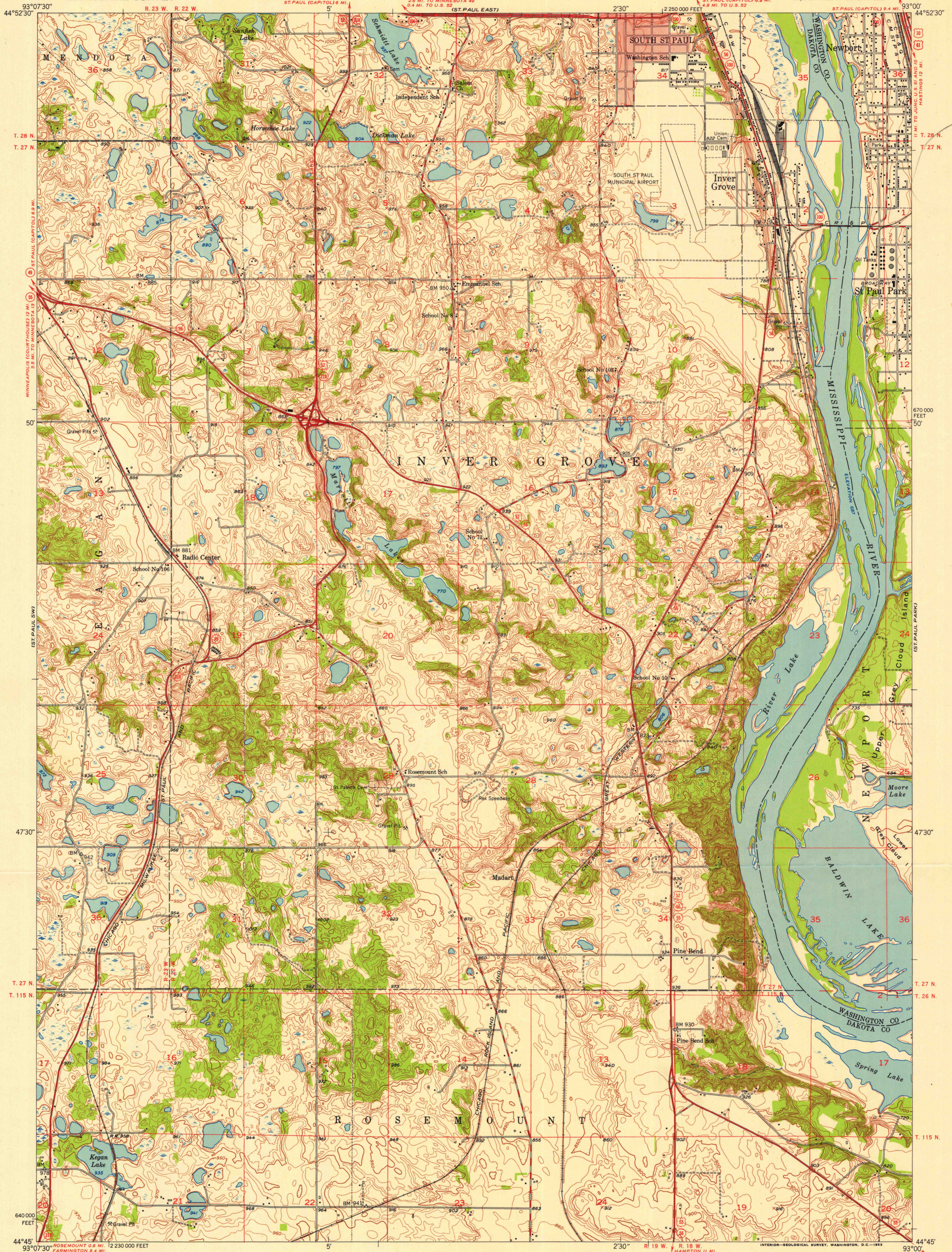


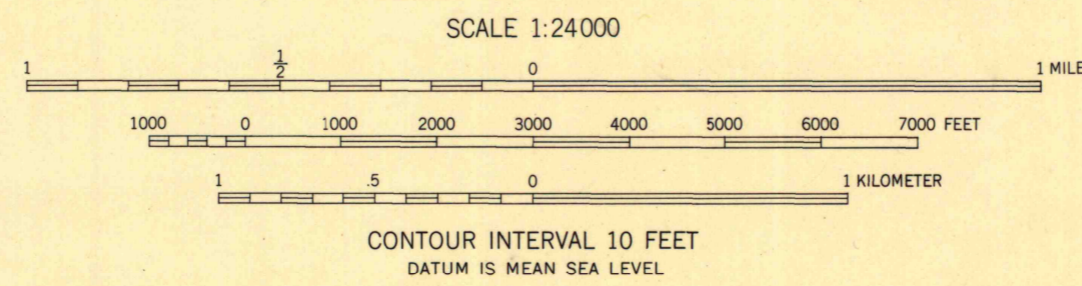
UNITED STATES  
DEPARTMENT OF THE INTERIOR  
GEOLOGICAL SURVEY

HEIGHTS  
INVER GROVE QUADRANGLE  
MINNESOTA  
7.5 MINUTE SERIES (TOPOGRAPHIC)  
SE/4 ST. PAUL 15' QUADRANGLE



Mapped, edited, and published by the Geological Survey  
Control by USGS, USC&GS, and USCE  
Topography from aerial photographs by Kelsch plotter  
Aerial photographs taken 1947. Field check 1951  
Polyconic projection. 1927 North American datum  
10,000-foot grid based on Minnesota coordinate system,  
south zone  
Red tint indicates area in which only  
landmark buildings are shown

TRUE NORTH  
MAGNETIC NORTH  
APPROXIMATE MEAN  
DECLINATION, 1951



ROAD CLASSIFICATION  
Heavy-duty 4 LANE 16 LANE Light-duty  
Medium-duty 4 LANE 6 LANE Unimproved dirt  
U. S. Route State Route



HEIGHTS  
INVER GROVE, MINN.  
SE/4 ST. PAUL 15' QUADRANGLE  
N4445-W9300/7.5  
1951