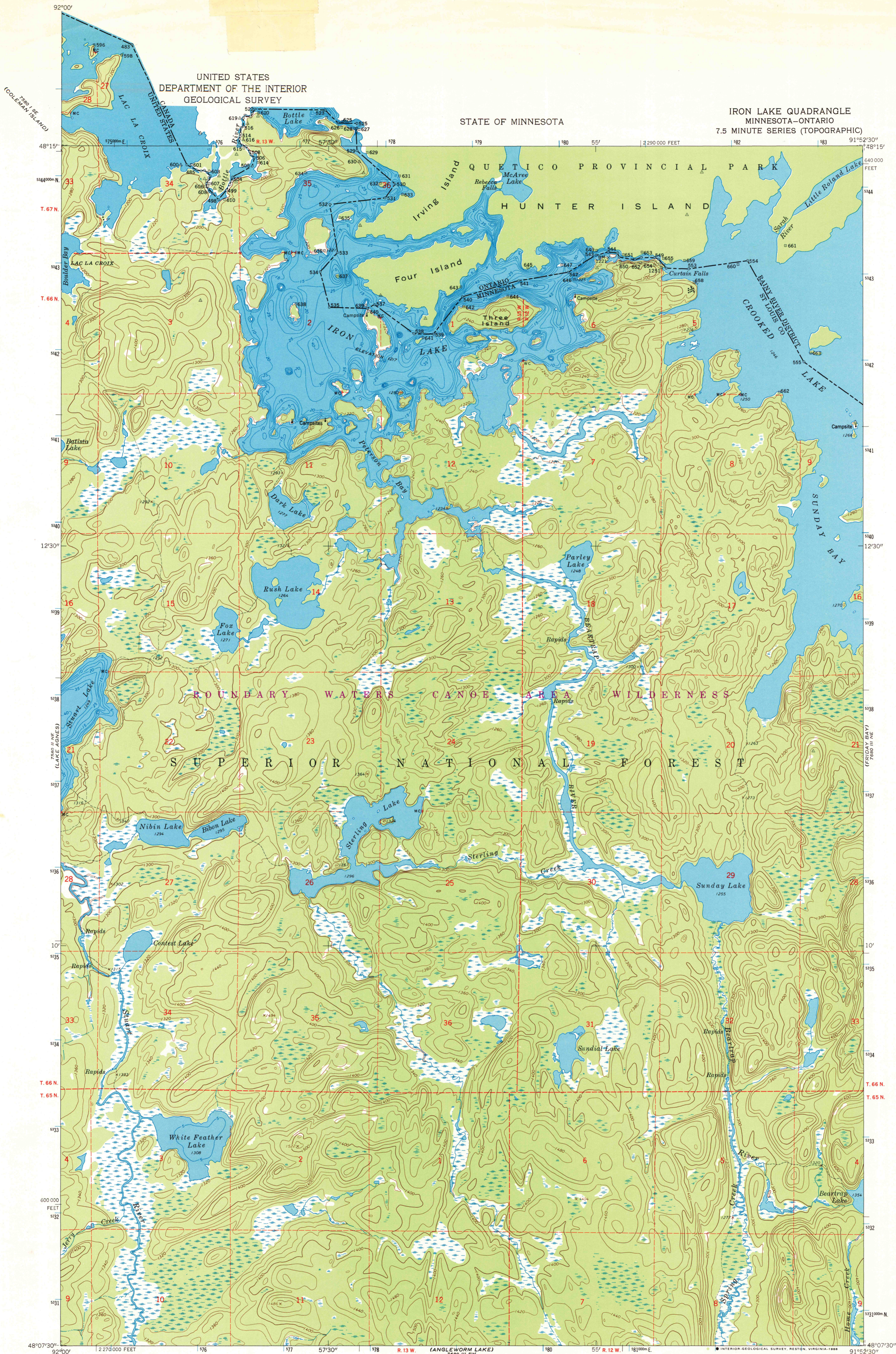


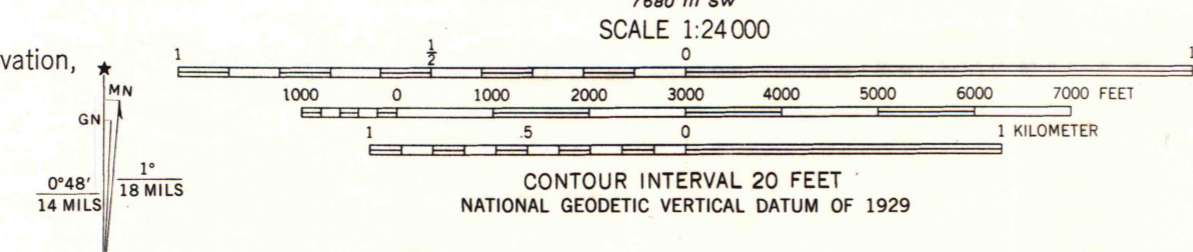
UNITED STATES  
DEPARTMENT OF THE INTERIOR  
GEOLOGICAL SURVEY

STATE OF MINNESOTA

IRON LAKE QUADRANGLE  
MINNESOTA-ONTARIO  
7.5 MINUTE SERIES (TOPOGRAPHIC)



Mapped, edited, and published by the Geological Survey in cooperation with the State of Minnesota Department of Conservation, and the Iron Range Resources and Rehabilitation Commission  
Control by USGS, NOS/NOAA, and International Boundary Commission  
Topography by photogrammetric methods from aerial photographs taken 1959. Field checked 1963  
Canadian portion copied from Quetico quadrangle (1:250,000) 1957, Surveys and Mapping Branch, Department of Mines and Technical Surveys  
Depth curves compiled from charts furnished by Minnesota Department of Conservation  
Polyconic projection. 1927 North American Datum  
10,000-foot grid based on Minnesota coordinate system, north zone 1000-meter Universal Transverse Mercator grid ticks, zone 15, shown in blue



To place on the predicted North American Datum 1983 move the projection lines 5 meters north and 13 meters east as shown by dashed corner ticks



ROAD CLASSIFICATION  
Trails

IRON LAKE, MINN.-ONT.  
48091-B8-TF-024

1963  
PHOTOREVISED 1986  
DMA 7680 III NW-SERIES V872

U.S. Regional  
Depository Copy  
DO NOT DISCARD  
A.H. ROBINSON  
MAP LIBRARY  
FEB 1 01987

University of Wisconsin  
Madison

UTM GRID AND 1986 MAGNETIC NORTH DECLINATION AT CENTER OF SHEET  
There may be private inholdings within the boundaries of the National or State reservations shown on this map

THE U.S. PORTION OF THIS MAP COMPLIES WITH NATIONAL MAP ACCURACY STANDARDS FOR SALE BY THE U.S. GEOLOGICAL SURVEY, RESTON, VIRGINIA 22092  
A FOLDER DESCRIBING TOPOGRAPHIC MAPS AND SYMBOLS IS AVAILABLE ON REQUEST

Revisions shown in purple and woodland compiled from aerial photographs taken 1982 and other source data. Partial field check by U.S. Forest Service. Map edited 1986