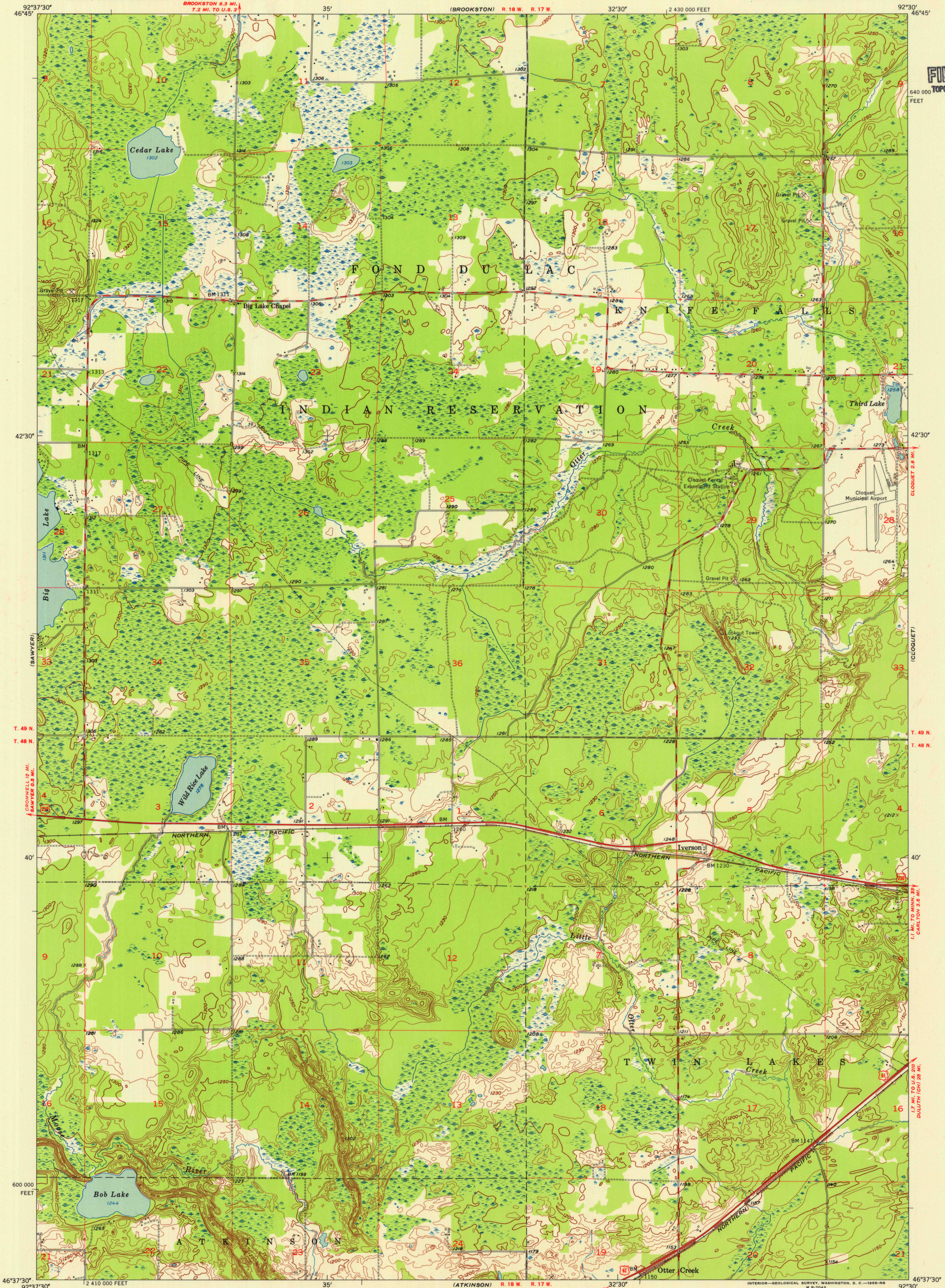
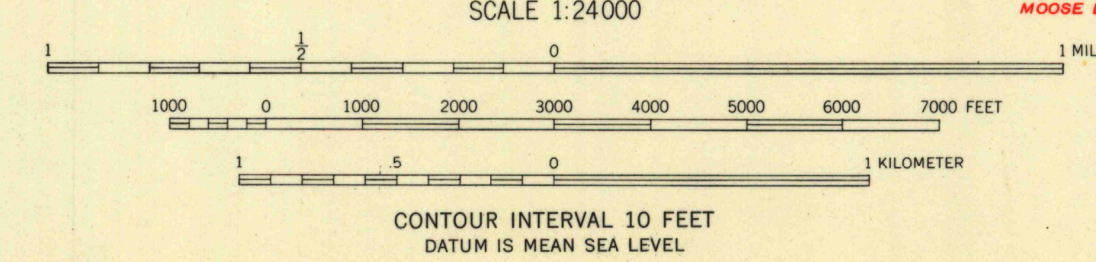
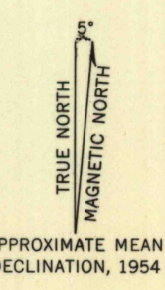


U.S.G.S.  
FILE COPY  
TOPOGRAPHIC DIVISION



Mapped, edited, and published by the Geological Survey  
Control by USGS and USC&GS  
Topography from aerial photographs by Kesh plotter  
Aerial photographs taken 1952. Field check 1954  
Polyconic projection. 1927 North American datum  
10,000-foot grid based on Minnesota coordinate system,  
central zone



USGS  
Historical File  
Topographic Division

ROAD CLASSIFICATION	
Heavy-duty	4 LANE 18 LANE
Medium-duty	4 LANE 18 LANE
Light-duty	Light-duty
Unimproved dirt	Unimproved dirt
U. S. Route	U. S. Route
State Route	State Route



IVERSON, MINN.  
N4637.5-W9230/7.5  
1954

THIS MAP COMPLIES WITH NATIONAL MAP ACCURACY STANDARDS  
FOR SALE BY U. S. GEOLOGICAL SURVEY, FEDERAL CENTER, DENVER, COLORADO OR WASHINGTON 25, D. C.  
A FOLDER DESCRIBING TOPOGRAPHIC MAPS AND SYMBOLS IS AVAILABLE ON REQUEST

U.S.G.S.  
FILE COPY  
TOPOGRAPHIC DIVISION