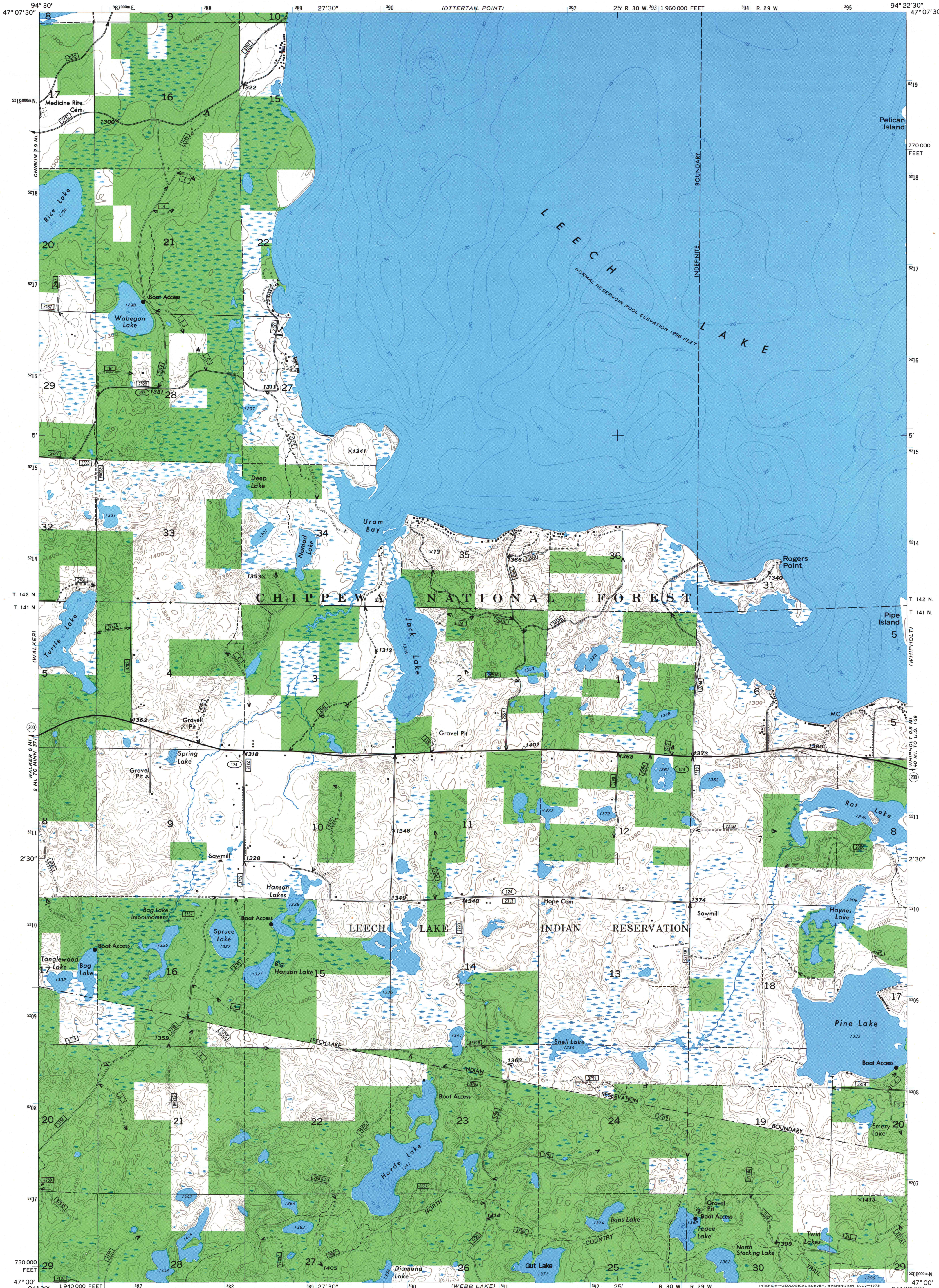


UNITED STATES
DEPARTMENT OF THE INTERIOR
GEOLOGICAL SURVEY
MODIFIED FOR USDA FOREST SERVICE USE

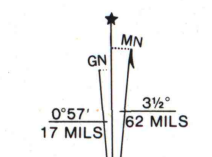
JACK LAKE QUADRANGLE
MINNESOTA—CASS CO
7.5 MINUTE SERIES (TOPOGRAPHIC)



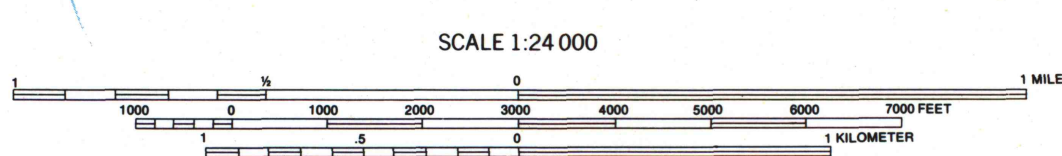
Base map prepared by the U.S. Geological Survey
Control by USGS and USC&GS

Topography by photogrammetric methods from aerial
photographs taken 1970. Field checked 1971.
Hydrography compiled from information furnished by
Minnesota Department of Conservation

Projection and 10,000-foot grid ticks: Minnesota coordinate
system, central zone (Lambert conformal conic)
1000-meter Universal Transverse Mercator grid ticks,
zone 15, shown in blue. 1927 North American datum
Modification to the USGS base map by the Geomatics
Service Center from 1981, 1984, and 1985 aerial photography
and 1987 correction guides furnished by the Eastern Region.

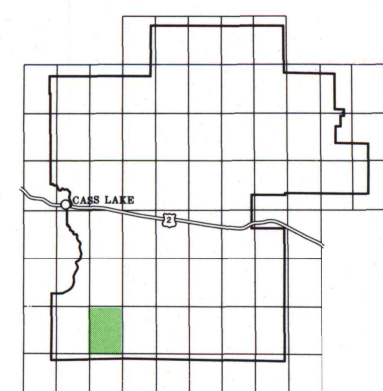


UTM GRID AND 1987
MAGNETIC NORTH
DECLINATION AT
CENTER OF SHEET



CONTOUR INTERVAL 10 FEET
DATUM IS MEAN SEA LEVEL

- LEGEND**
- National Forest Boundary
 - National Forest Land as of 1987
 - Primary Highway
 - Secondary Highway
 - Light Duty Road
 - Primitive Road
 - U.S. Highway
 - State Highway
 - County Highway
 - Forest Road
- TOWNSHIP AND SECTION LINE CLASSIFICATION**
- Surveyed, Location Reliable



Copies of this map are
available for purchase at:
Forest Supervisor's Office
Cass Lake, Minn. 56633

JACK LAKE, MINN.
N4700—W9422.5/7.5
1971
DMA 7178 III SW—