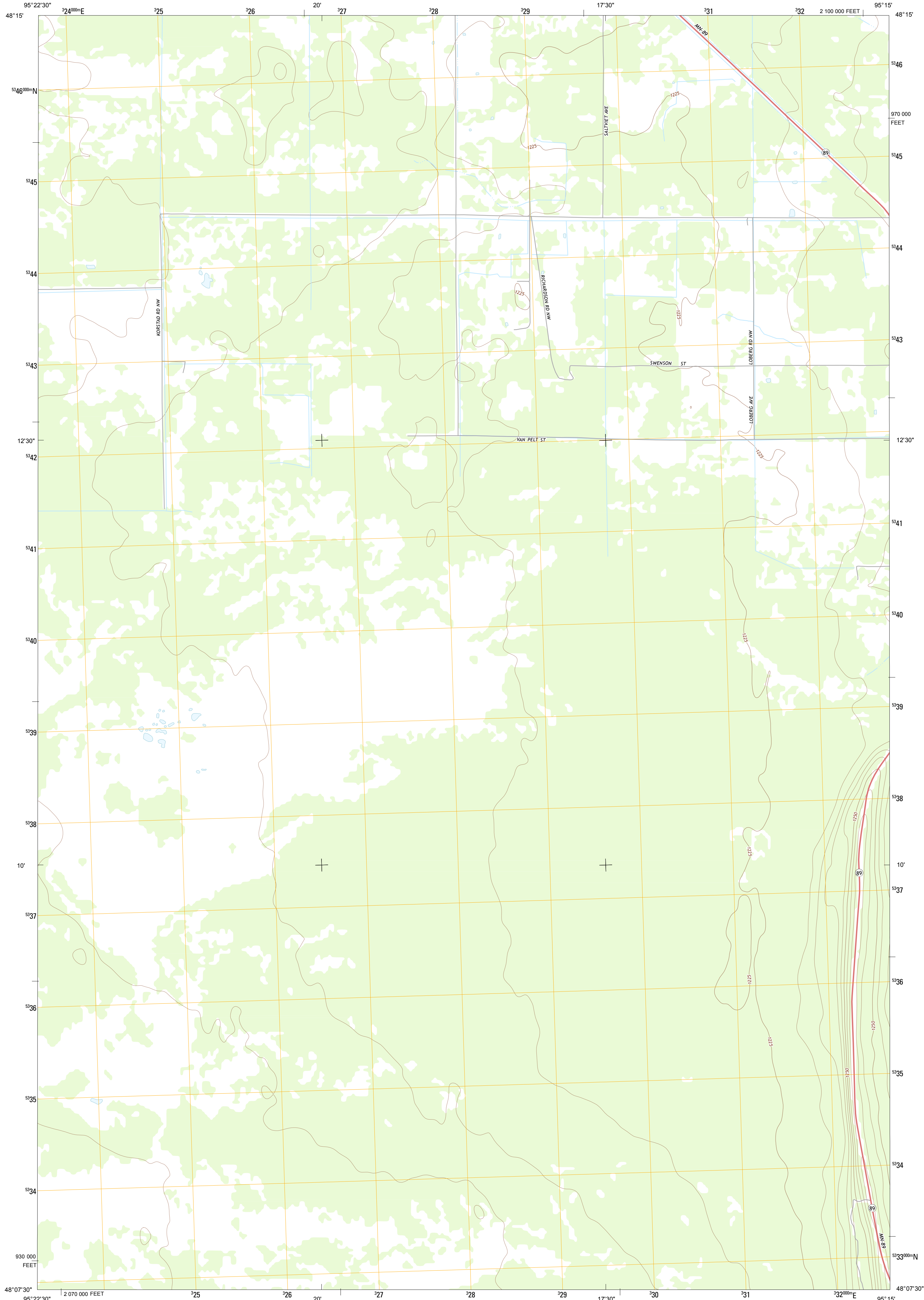




U.S. DEPARTMENT OF THE INTERIOR  
U. S. GEOLOGICAL SURVEY

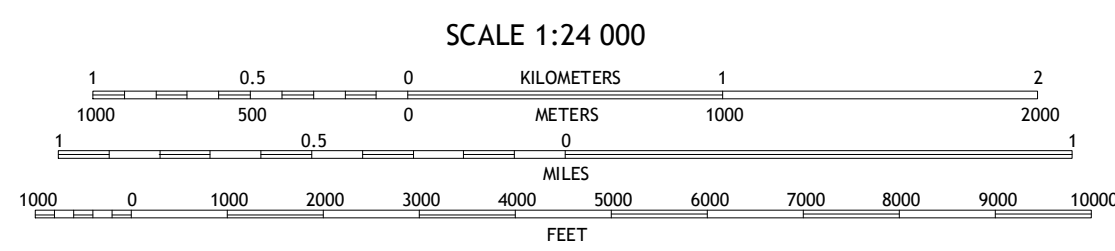
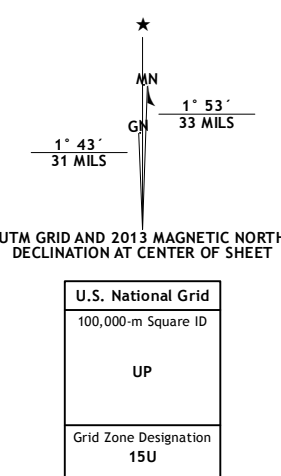


JELLE NE QUADRANGLE  
MINNESOTA-BELTRAMI CO.  
7.5-MINUTE SERIES



Produced by the United States Geological Survey  
North American Datum of 1983 (NAD83)  
World Geodetic System of 1984 (WGS84). Projection and  
1 000-meter grid: Universal Transverse Mercator, Zone 15U  
10 000-foot ticks: Minnesota Coordinate System of 1983 (north  
zone)

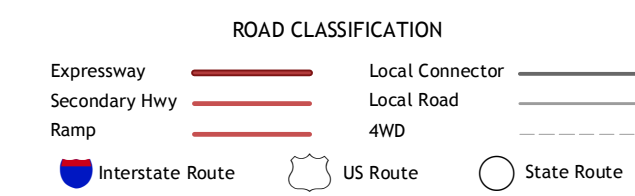
Imagery.....NAIP, May 2010 - August 2010  
Roads.....©2006-2012 TomTom  
Names.....GNIS, 2013  
Hydrography.....National Hydrography Dataset, 2010  
Contours.....National Elevation Dataset, 2012  
Boundaries.....Census, IBWC, IBC, USGS, 1972 - 2012



QUADRANGLE LOCATION

Carmel	Four Town	Head of Rapid River
Jelle	Jelle NE	Thorhult
Cahill Lake	Gimwan Lake	Noisquito Creek

ADJOINING 7.5 QUADRANGLES



JELLE NE, MN  
2013