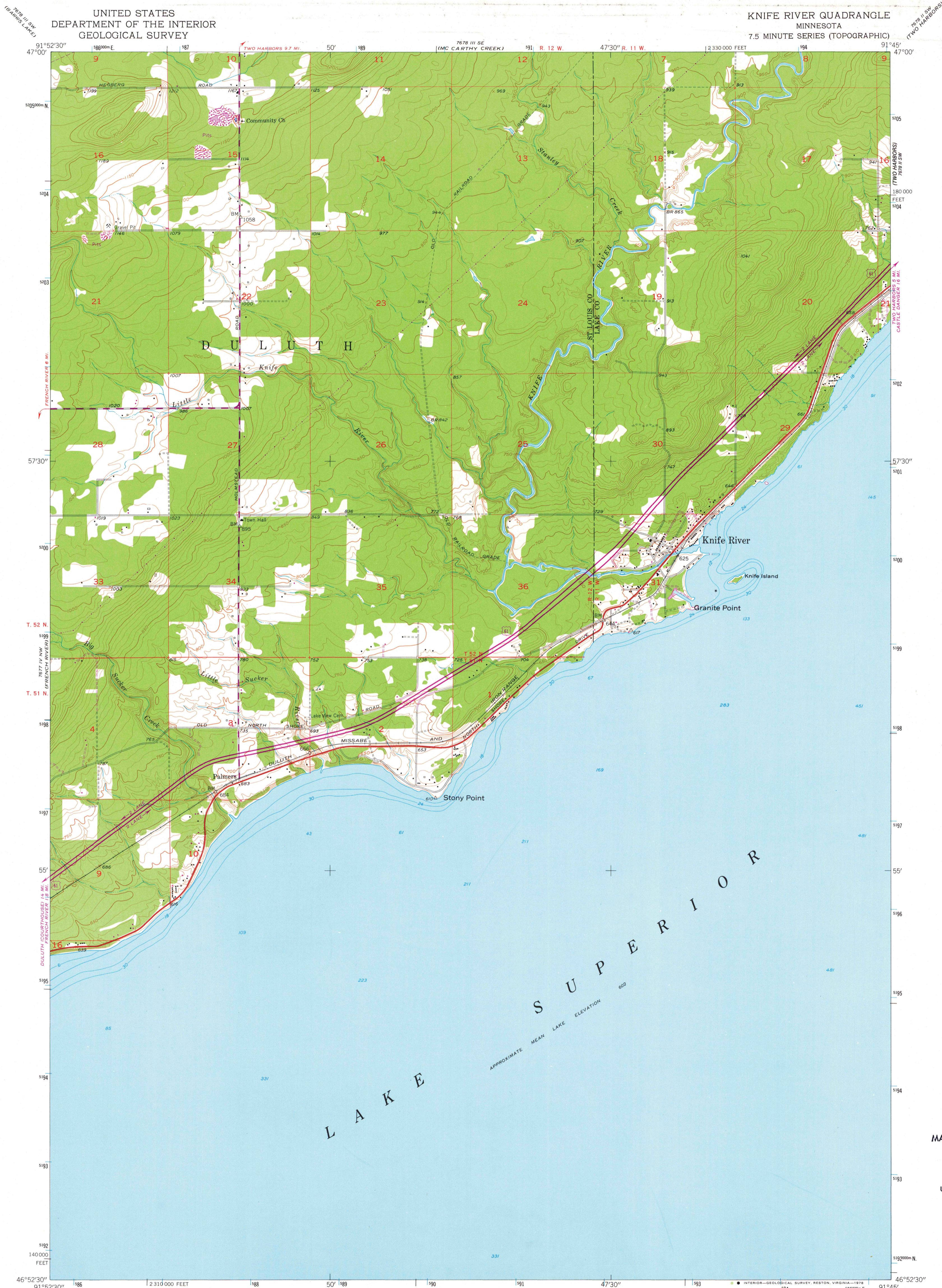
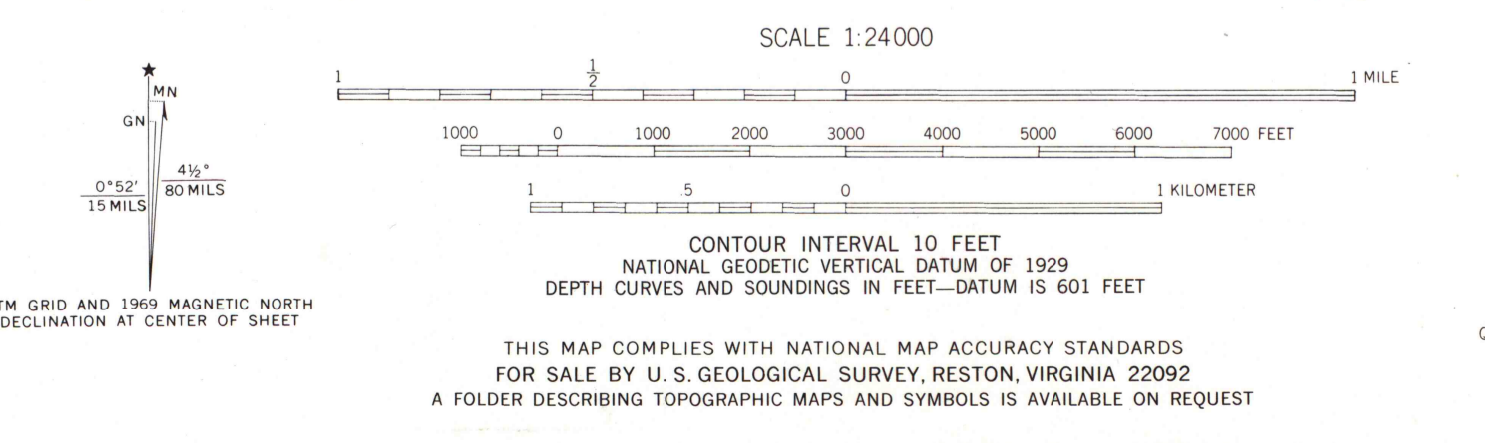


UNITED STATES
DEPARTMENT OF THE INTERIOR
GEOLOGICAL SURVEY

KNIFE RIVER QUADRANGLE
MINNESOTA
7.5 MINUTE SERIES (TOPOGRAPHIC)



Mapped, edited, and published by the Geological Survey
Control by USGS and USC&GS
Topography from aerial photographs by photogrammetric methods
Aerial photographs taken 1952. Field check 1953
Hydrography from U. S. Lake Survey Chart 96, (1:120,000)
Polyconic projection, 1927 North American datum
10,000-foot grid based on Minnesota coordinate system,
north zone
1000-meter Universal Transverse Mercator grid ticks,
zone 15, shown in blue
Revisions shown in purple compiled in cooperation with
the State of Minnesota from aerial photographs taken 1969
This information not field checked
Map photosinspected 1975



ROAD CLASSIFICATION
Heavy-duty 4 LANE 16 LANE Light-duty
Medium-duty 4 LANE 16 LANE Unimproved dirt
U. S. Route State Route
KNIFE RIVER, MINN.
N4652.5-W9145/7.5
1953
PHOTOREVISED 1969
PHOTOINSPECTED 1975

MAP AND AIR PHOTO
LIBRARY
OCT 18 1978
University of Wisconsin
Madison