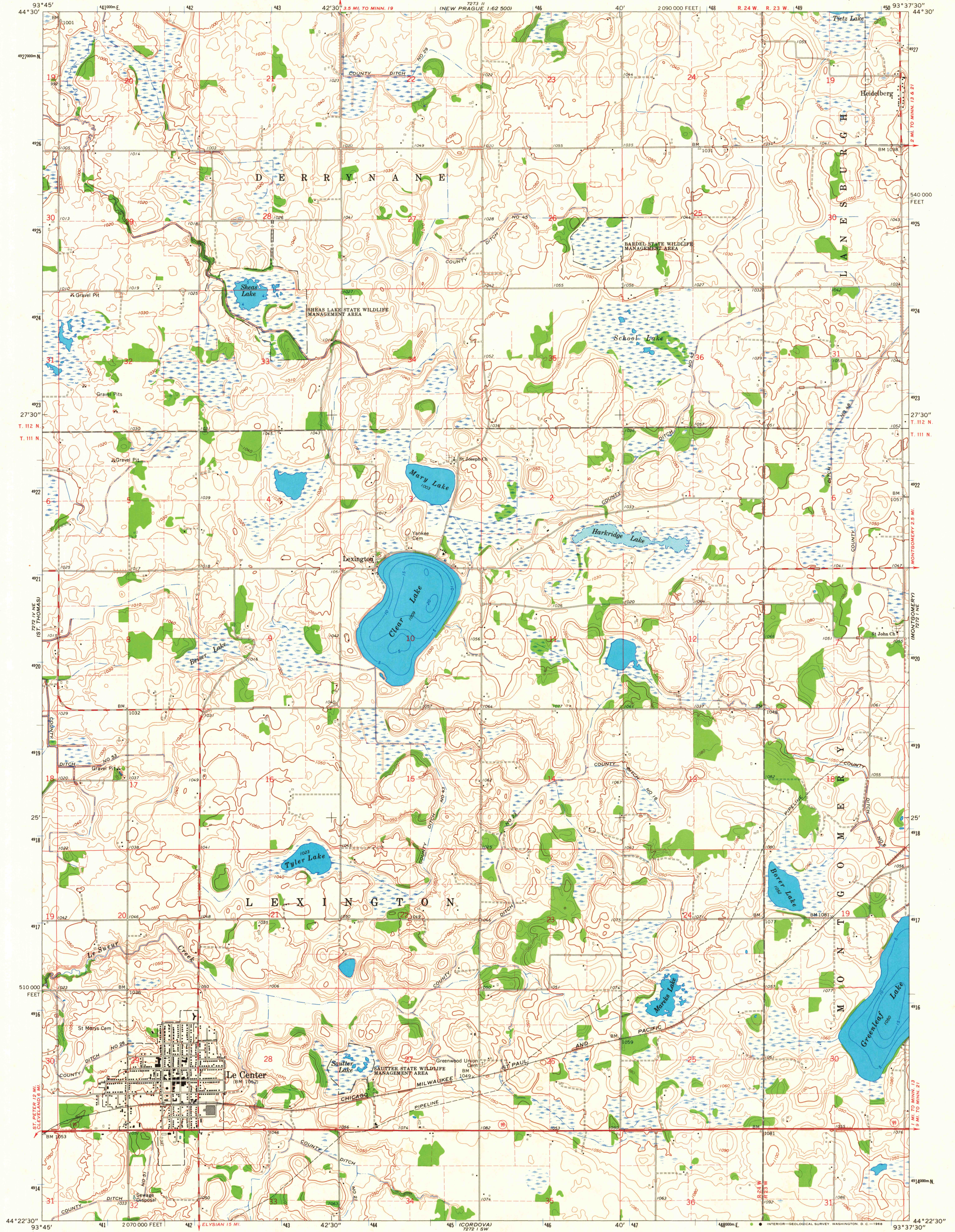


16E L. 23 W. 19  
1:62,500

16E L. 23 W. 19  
1:62,500



Mapped, edited, and published by the Geological Survey

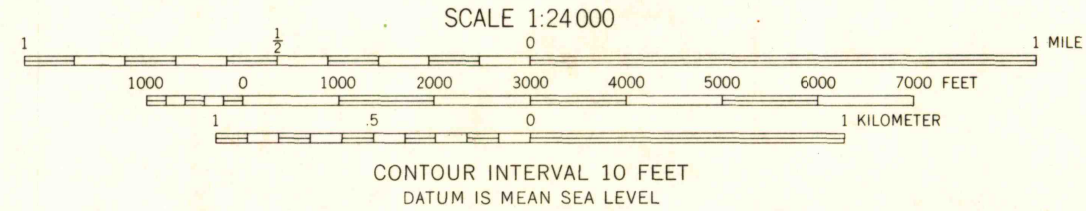
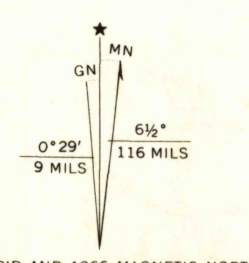
Control by USGS and USC&GS

Topography by photogrammetric methods from aerial photographs taken 1964. Field checked 1966

Depth curves and soundings from charts furnished by Minnesota Department of Conservation

Polyconic projection. 1927 North American datum 10,000-foot grid based on Minnesota coordinate system, south zone 1000-meter Universal Transverse Mercator grid ticks, zone 15, shown in blue

Fine red dashed lines indicate selected fence and field lines where generally visible on aerial photographs. This information is uncheck



CONTOUR INTERVAL 10 FEET  
DATUM IS MEAN SEA LEVEL

U.S.G.S.  
FILE COPY  
TOPOGRAPHIC DIVISION

ROAD CLASSIFICATION

- Heavy-duty ————
- Medium-duty ————
- Light-duty ————
- Unimproved dirt ————
- State Route ○

THIS MAP COMPLIES WITH NATIONAL MAP ACCURACY STANDARDS  
FOR SALE BY U.S. GEOLOGICAL SURVEY, DENVER, COLORADO 80225, OR WASHINGTON, D. C. 20242  
A FOLDER DESCRIBING TOPOGRAPHIC MAPS AND SYMBOLS IS AVAILABLE ON REQUEST

LE CENTER, MINN.  
N4422.5-W9337.5/7.5

1966

AMS 7272 1 NW-SERIES V872

3735  
MAY 10 1968