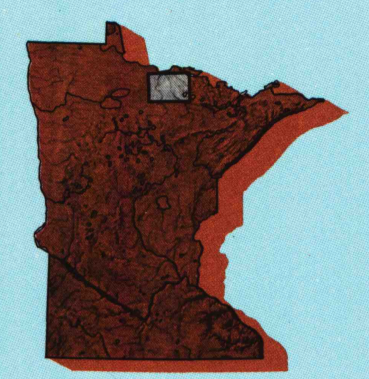


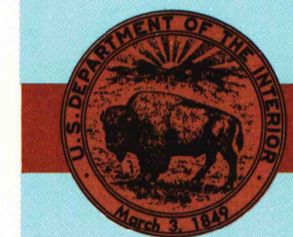
# Littlefork MINNESOTA

1:100 000-scale metric  
topographic map



30 X 60 MINUTE QUADRANGLE  
SHOWING

- Contours and elevations in meters
- Highways, roads and other manmade structures
- Water features
- Woodland areas
- Geographic names



U. S. GEOLOGICAL SURVEY

1978  
PHOTOINSPECTED 1987

Produced by the United States Geological Survey

Compiled from USGS 1:24 000-scale topographic maps dated 1969-71. Map edited 1978  
 1927 North American Datum (NAD 27). Projection and 10 000-meter grid: Universal Transverse Mercator, zone 15 25 000-foot ticks: Minnesota coordinate system, north zone  
 The difference between NAD 27 and North American Datum of 1983 (NAD 83) is too small to show at this scale. The values of the shift between the datums for 7.5-minute intersections are given in USGS Bulletin 1875  
 There may be private inholdings within the boundaries of the National or State reservations shown on this map  
 Map photoinspected using 1987 photographs  
 No major culture or drainage changes found

CONTOUR INTERVAL 5 METERS  
 NATIONAL GEODETIC VERTICAL DATUM OF 1929  
 ELEVATIONS SHOWN TO THE NEAREST METER

THIS MAP COMPLIES WITH NATIONAL MAP ACCURACY STANDARDS

CONVERSION TABLE		DECLINATION DIAGRAM	ADJOINING MAPS		
Meters	Feet		1	2	3
1	3.2808		1	2	3
2	6.5616		4	5	6
3	9.8424		7	8	9
4	13.1232		10	11	12
5	16.4040		13	14	15
6	19.6848		16	17	18
7	22.9656		19	20	21
8	26.2464		22	23	24
9	29.5272		25	26	27
10	32.8080		28	29	30

To convert meters to feet multiply by 3.2808  
 To convert feet to meters multiply by 0.3048

UTM grid convergence (GN) and 1983 magnetic declination (MN) at center of map Diagram is approximate

1 Baseline  
 2 International Falls  
 3 Pine Narrows  
 4 Upper Red Lake  
 5 Crane Lake  
 6 Blackduck  
 7 Bigfork  
 8 Vermilion Lake

FOR SALE BY U. S. GEOLOGICAL SURVEY  
 DENVER, COLORADO 80225, OR RESTON, VIRGINIA 22092

A.H. ROBINSON  
 MAP LIBRARY  
 MAR 15 1995

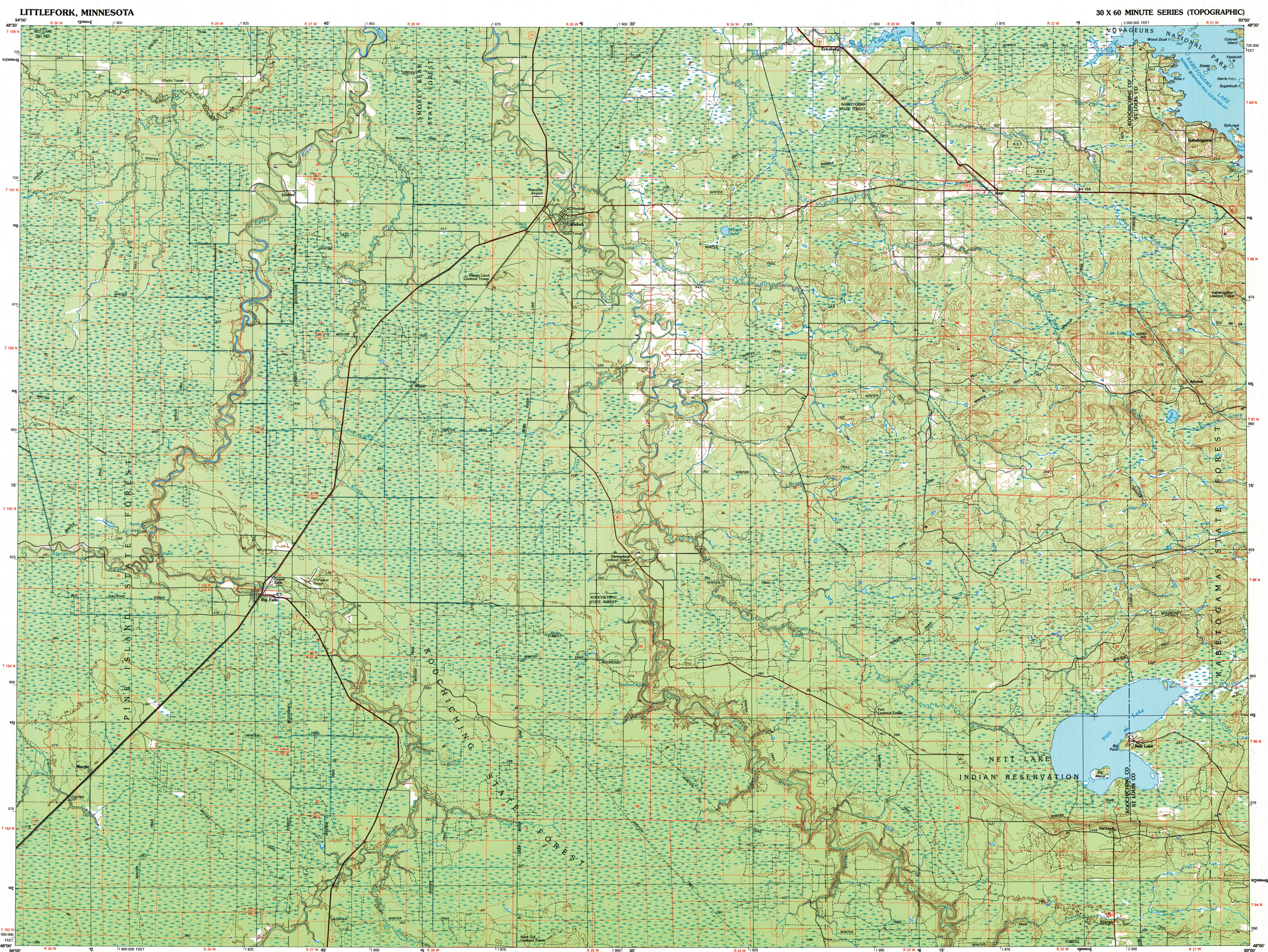
U.S. Regional  
 Depository Copy  
 DO NOT DISCARD

### Topographic Map Symbols

- Primary highway, hard surface
- Secondary highway, hard surface
- Light duty road, principal street, hard or improved surface
- Other road or street; trail
- Route marker: Interstate, U.S.; State
- Railroad: standard gage; narrow gage
- Bridge: overpass; underpass
- Tunnel: road; railroad
- Built up area; locality; elevation
- Airport: landing field; landing strip
- National boundary
- State boundary
- County boundary
- Chil township boundary
- National or State reservation boundary
- Land grant boundary
- U.S. public lands survey: range, township; section
- Range, township; section line: protracted
- Power transmission line; pipeline
- Dam; dam with lock
- Cemetery: building
- Wellhead; water well; spring
- Mine shaft; adit or cave; mine, quarry; gravel pit
- Ruins: cliff dwelling
- Campground; picnic area; U.S. location monument
- Ruins: cliff dwelling
- Distorted surface: strip mine, lava, sand
- Contours: index; intermediate; supplementary
- Bathymetric contours: index; intermediate
- Stream, lake: perennial; intermittent
- Rapids, large and small; falls, large and small
- Area to be submerged; marsh, swamp
- Land subject to controlled inundation; woodland
- Scrub; mangrove
- Orchard; vineyard

A pamphlet describing topographic maps is available on request

SET: Book - 9/8



SCALE 1:100 000  
 1 CENTIMETER ON THE MAP REPRESENTS 1 KILOMETER ON THE GROUND  
 CONTOUR INTERVAL 5 METERS

LITTLEFORK, MINNESOTA  
 48093-A1-TM-100  
 1978  
 PHOTOINSPECTED 1987