

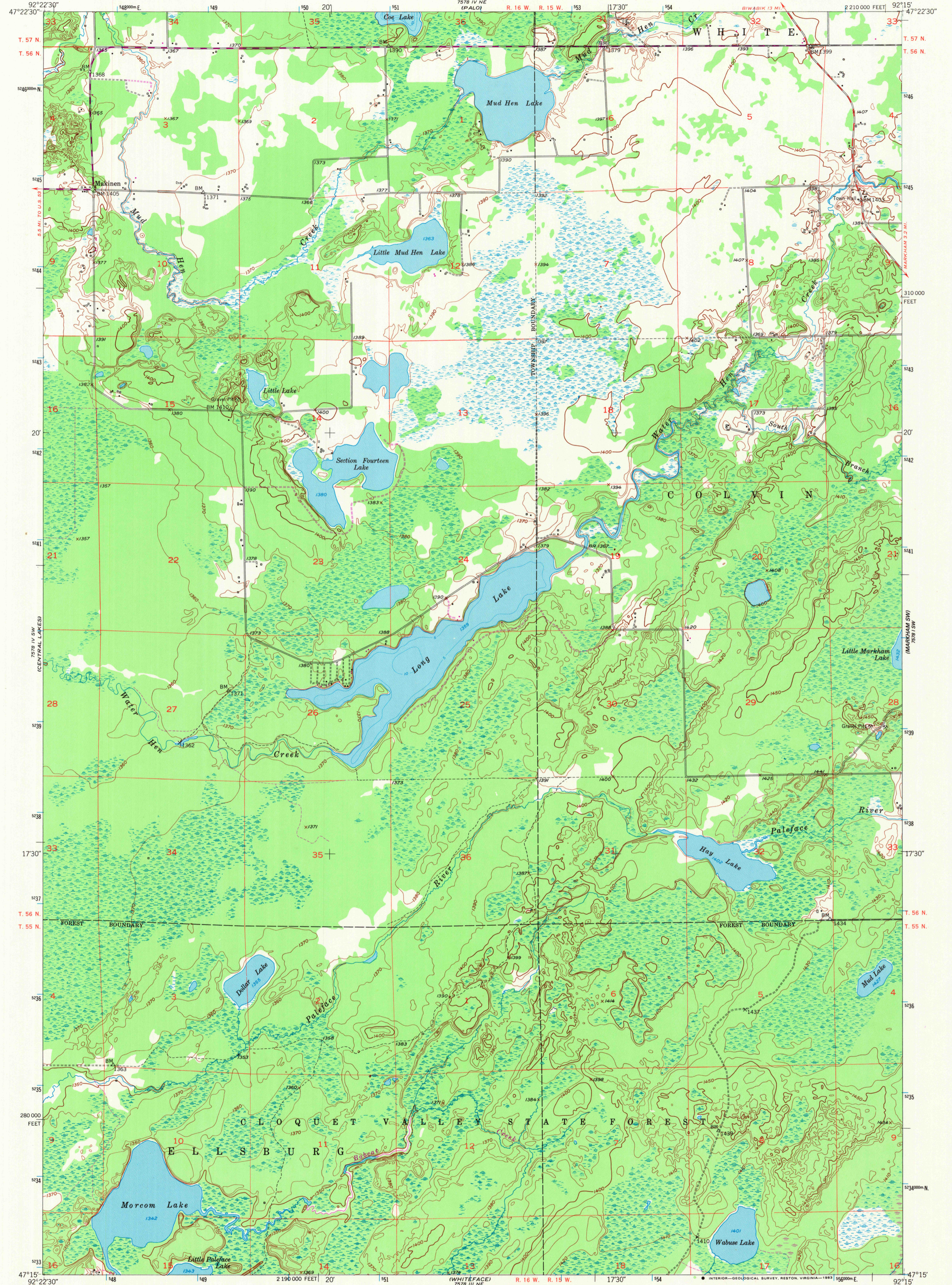
7578 IV NW  
(PALEO)

UNITED STATES  
DEPARTMENT OF THE INTERIOR  
GEOLOGICAL SURVEY

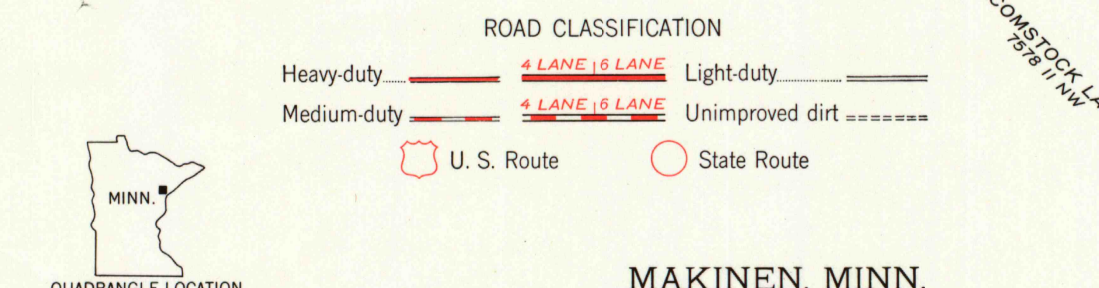
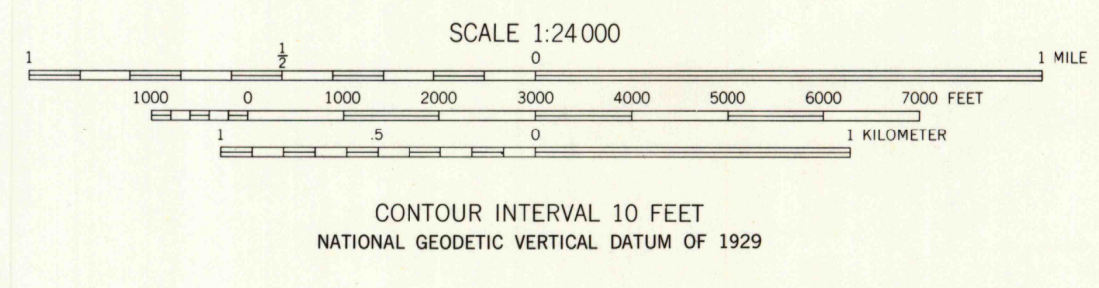
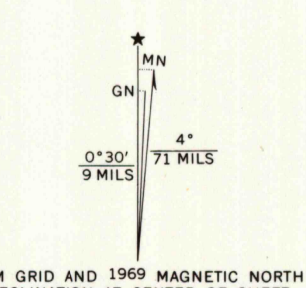
STATE OF MINNESOTA  
IRON RANGE RESOURCES AND REHABILITATION COMMISSION

MAKINEN QUADRANGLE  
MINNESOTA-ST. LOUIS COUNTY  
7.5 MINUTE SERIES (TOPOGRAPHIC)

7578 IV NW  
(MORNING)



Mapped, edited, and published by the Geological Survey  
Control by USGS and USC&GS  
Topography from aerial photographs by Kesh plotter  
Aerial photographs taken 1950. Field check 1951  
Polyconic projection. 1927 North American datum  
10,000-foot grid based on Minnesota coordinate system,  
north zone  
1000-meter Universal Transverse Mercator grid ticks,  
zone 15, shown in blue  
Depth curves compiled from charts furnished by  
Minnesota Department of Conservation  
Revisions shown in purple compiled from aerial photographs  
taken 1969. This information not field checked



THIS MAP COMPLIES WITH NATIONAL MAP ACCURACY STANDARDS  
FOR SALE BY U. S. GEOLOGICAL SURVEY, RESTON, VIRGINIA 22092  
A FOLDER DESCRIBING TOPOGRAPHIC MAPS AND SYMBOLS IS AVAILABLE ON REQUEST

To place on the predicted North American Datum 1983,  
move the projection lines 7 meters north and  
14 meters east as shown by dashed corner ticks  
There may be private inholdings within the boundaries of  
the National or State reservations shown on this map

MAKINEN, MINN.  
N4715-W9215/7.5  
1951  
PHOTOREVISED 1969  
AMS 7578 IV SE-SERIES V872

RETURN TO:  
USGS NMD HISTORICAL MAP ARCHIVE